

## Florida Baptist Historical Society Biography Collection

**This link provides the specific resource information which documents and undergirds the biographical resource information on a specific Florida Baptist pastors, church staff or significant laity leaders.**

The link you have chosen connects to the specific individual's resource files that provide the basis for information which the Historical Society has used to develop the respective biographical profile. The sources attached may include copies of articles gleaned from back issues of the *Florida Baptist Witness* and other news publications. Other resources include books, historical journal articles and church histories that are cited as documentation for the biography.

Visit our website at [FloridaBaptistHistory.org](http://FloridaBaptistHistory.org)

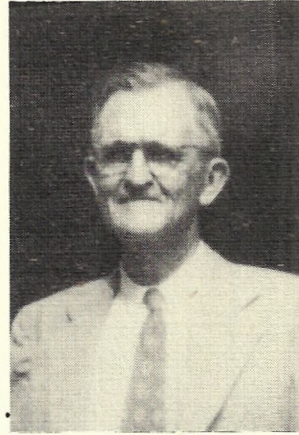
**Simmons, Phillip E.** served as pastor of Neptune Baptist Church (1974-1978) and North Central Baptist Church, Gainesville (1978-1983). He and his wife, Cheryl, had three children.



# Shepherds of the flock



Rev. Paul McCullers  
September 1935 - December 1938



Dr. A.J. Gross  
February 1939 - June 1944



Rev. Ben L. Earnest  
September 1944 - August 1945



Rev. E.E. Earnest  
October 1946 - October 1952



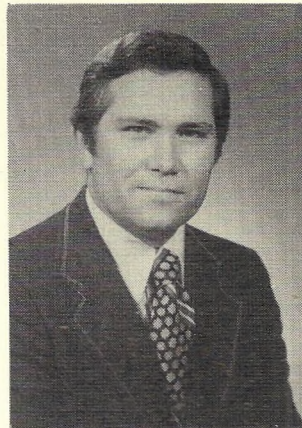
Dr. Pat R. Wimberly  
December 1952 - October 1956



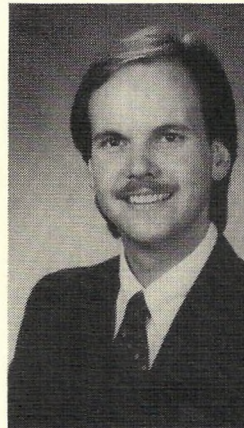
Rev. Sheppard B. Earnest  
November 1956 - December 1956



Dr. N.B. Langford Jr.  
June 1963 - February 1978



Rev. Phillip E. Simmons  
October 1978 - December 1983



Rev. Jim McCaul  
March 1985 - present

---

Dr. Thomas V. McCaul  
October 1956 - November 1956  
(interim)

Dr. I.E. Enlow  
December 1962 - May 1963  
(interim)

Dr. Waylon B. McCaul  
July 1984 - March 1985  
(interim)

of the Episcopal Young Churchmen.

**ST. JOHN'S** Baptist Church will begin observance of its centennial Sunday at 10:50 a.m. The **Rev. Phillip E. Simmons**, pastor of Neptune Baptist Church, Neptune Beach, will be guest speaker.

## Neptune Beach Baptists Open New Addition

Dedication of the Neptune Baptist Church's 16,000-square foot addition is scheduled for Sunday at the 11 a.m. Worship Service, according to the Rev. Phil Simmons, pastor.

The \$460,000 building consists of nine children's departments, a music suite with an 80-seat rehearsal room; two robe rooms; two library rooms; a 3,000-square foot fellowship hall with a modern kitchen; and an office complex.

The children's classes are designed for both Sunday school and private school usage with sinks and storage credenzas.

A vacation Bible school with an expected enrollment of over 700 is scheduled for June, said the Rev. Mr. Simmons.

The music suite will be an integral addition to the expanding music ministry under the direction of Rev. Sonny Stroud. The rehearsal room is equipped with two studio Yamaha pianos.

The fellowship hall will seat approximately 400 for banquets and socials. It also is designed with lighting for dramatic presentations. The kitchen is equipped with commercial dishwasher, coolers, freezers and cold and hot serving facilities.

The Neptune Baptist Church was formed in 1955. The church has 1,100 members. Total value for the four-structure facility is \$1,131,500.

**COME AND WORSHIP**  
**MT. ARARAT BAPTIST CHURCH**  
 A CHURCH FOR GOD AND HUMANITY  
 "WE ENTER TO WORSHIP — WE DEPART TO SERVE"  
 2503 N. Myrtle Avenue  
 Rev. R. THADDAUS WILLIAMS, PASTOR

EARLY WORSHIP AND HOLY COMMUNION	7:00 A.M.
CHURCH SCHOOL	9:20 A.M.
MORNING WORSHIP	11:00 A.M.
HOLY COMMUNION	3:00 P.M.
CHURCH ORIENTATION	5:00 P.M.

**OAK CREST UNITED METHODIST CHURCH**  
 5900 Ricker Rd.  
**MAUNDY THURSDAY SERVICE**  
 April 7th, 7:30 p.m.  
**A Special EASTER CHORALE**  
 followed by a reenactment of  
**"THE LAST SUPPER"**  
 PUBLIC CORDIALLY INVITED

**CHRISTIAN SCIENCE**  
*Lesson-Sermon Subject in all*  
**CHURCHES TOMORROW**

**UNREALITY**

Jacksonville Area Branches of The Mother Church  
 The First Church of Christ, Scientist, in Boston, Massachusetts  
*All Are Welcome*

**FIRST CHURCH** 1st and Laura Streets  
 Sunday Services and Sunday School 11:00 A.M.  
 Wednesday Services 7:30 P.M.  
 READING ROOM 28 West Adams St.

**SECOND CHURCH** Riverside and Avondale Aves.  
 Sunday Services and Sunday School 10:00 A.M.  
 Wednesday Services 8:00 P.M.  
 READING ROOM 3641 St. Johns Ave.

**FOURTH CHURCH** 8327 Beach Blvd.  
 Sunday Services and Sunday School 11:00 A.M.  
 Wednesday Services 8:00 P.M.  
 READING ROOM 8327 Beach Blvd.

*Nurseries Open Sunday and Wednesday*