

*Suwannee
Missionary Baptist
Association*

FLORIDA - 1939

Sixty-Eighth Annual Session

*Held With
Branford Baptist Church
October 12-13, 1939*

*Next Session Of The Association
Will Be Held, October 17-18, 1940,
With Live Oak Baptist Church,
Suwannee County, Florida*

11/10/39

on time

MINUTES

Sixty-Eighth Annual Session

Suwannee

Missionary Baptist Association

Held With

Branford Baptist Church

October 12-13, 1939

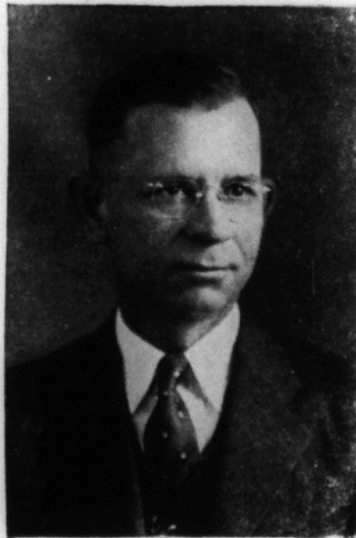
**Next Session of the Association Will Be Held With
Live Oak Baptist Church, Suwannee County
October 17-18, 1940**

Rev. W. T. Newsome, Moderator, Live Oak, Florida

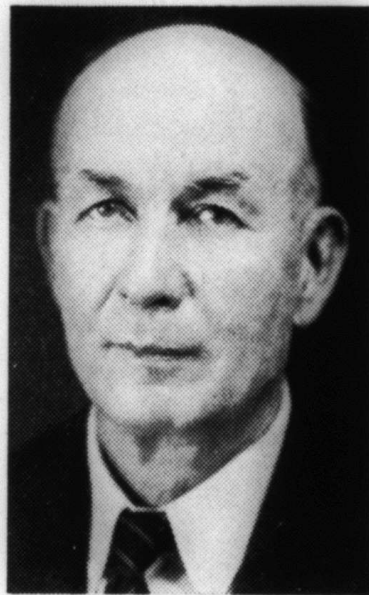
H. J. Horne, Vice-Moderator, Live Oak, Florida

G. L. Dorman, Clerk, Live Oak, Florida

R. E. Hatch, Treasurer, Branford, Florida



REV. W. T. NEWSOME
Moderator of Association



G. L. DORMAN
Clerk of Association

INDEX

	Section	Page
Articles of Faith		5
Auxiliary Meetings		13
By-Laws		9
 Church Directory:		
B. T. U. Officers		39
Choir Directors		40
Director Layman's Brotherhood		39
Ordained Ministers In Association		39
W. M. S. Presidents		40
Committees Appointed	9	17
Constitution		8
 Directory of Association:		
Associational Missionary		12
Chairmen of Committees To Report at Next Session		12
Chairmen of W. M. U. Committees		13
Executive Committee		12
Messengers to Florida Baptist Convention		13
Next Session		12
Officers of Association		12
Sermons Introductory & Missionary		13
Woman's Missionary Union Officers		13
Historical Table		48
Map		24-25
Memorial Page		38
Messengers 1939 Session		14
Order of Business		4
Record of Proceedings		16
 Reports:		
Baptist Training Union	19	19
Co-Operative Program	28	26
Christian Education	38	30
Digest of Letters	46	33
Evangelism	42	32
Executive Committee	8	16
Finance	45	33
Florida Baptist Children's Home	20	19
Foreign Missions	27	23
Home Missions	26	22
Hundred Thousand Club	30	28
Layman's Brotherhood	29	27
Ministerial Relief and Annuities	39	31
Nominations	47	34
Obituaries	43	32
Religious Literature	32	28
Resolutions	48-49	34
Social Service	31	28
State Missions	25	21
Sunday School	16	18
Treasurer's Report	44	33
Woman's Missionary Union		35
Statistical Tables		41-47
Visitors		15

ORDER OF BUSINESS

THURSDAY MORNING SESSION

- 10:00 A. M.—Devotional.
 10:15 A. M.—Organization. Enrollment of Messengers. Election of Officers. Report of Executive Committee. Reading of Petitionary Letters. Recognition of Visitors. Announcements.
 11:00 A. M.—Introductory Sermon.
 12:00—Noon.

THURSDAY AFTERNOON SESSION

- 1:30 P. M.—Devotional. Announcements of Committees.
 1:45 P. M.—Religious Literature.
 2:15 P. M.—Temperance Report. Address.
 2:45 P. M.—Reports on: Co-Operative Program, State Missions, Home Missions, Foreign Missions. Address on "World Missions."
 4:30 P. M.—Adjourn.

FRIDAY MORNING SESSION

- 9:30 A. M.—Devotional.
 9:45 A. M.—Reading of Minutes of Previous Day. Recognition of Visitors.
 10:00 A. M.—Children's Home Report. Address.
 10:15 A. M.—S. S. and B. Y. P. U. Report.
 11:00 A. M.—Missionary Sermon.
 12:00—Noon.

FRIDAY AFTERNOON SESSION

- 1:15 P. M.—Devotional.
 1:30 P. M.—Christian Education.
 1:45 P. M.—Reports on Obituaries, Finance, Nominations, Resolutions, Miscellaneous.
 2:15 P. M.—Doctrinal Sermon.

ARTICLES OF FAITH

1. OF THE SCRIPTURES

We believe that the Holy Bible was written by men Divinely inspired, and is a perfect treasure of heavenly instruction; that it has God for its Author, salvation for its end, and truth without any mixture of error for its matter; that it reveals the principles by which God will judge us; and therefore is, and shall remain to the end of the world, the true center of Christian union, and the supreme standard by which all human conduct, creeds, and opinions should be tried.

2. OF THE TRUE GOD

We believe that there is One, and only One living and true God, an Infinite, intelligent Spirit, Whose Name is Jehovah, the Maker and Supreme Ruler of Heaven and Earth; inexpressibly glorious in Holiness, and worthy of all possible honor, confidence and love; that in the Unity of the Godhead there are Three Persons, the Father, the Son, and the Holy Ghost; equal in every Divine Perfection, and executing distinct but harmonious Offices in the great work of Redemption.

3. OF THE FALL OF MAN

We believe that Man was created in holiness, under the law of his Maker; but by voluntary transgression fell from that holy and happy state; in consequence of which all Mankind are now sinners, not by constraint but choice; being by nature utterly void of that holiness required by the law of God; positively inclined to evil; and therefore under just condemnation to eternal ruin, without defense or excuse.

4. OF THE WAY OF SALVATION

We believe that the salvation of sinners is wholly of Grace; through the Mediatorial office of the Son of God; Who by the appointment of the Father, freely took upon Him our nature, yet without our sin; honored the Divine law by His Personal obedience, and by His death made a full Atonement for our sins; that having risen from the dead, He is now enthroned in heaven; and uniting in His wonderful Person the tenderest sympathies with Divine Perfections, He is every way qualified to be a suitable, a compassionate, and all-sufficient Saviour.

5. OF JUSTIFICATION

We believe that the great Gospel blessing which Christ secures to such as believe in Him is Justification; that Justification includes the pardon of sin, and the promise of eternal life on principles of righteousness; that it is bestowed, not in consideration of any works of righteousness which we have done, but solely through Faith in the Redeemer's Blood; by virtue of which faith His perfect righteousness is freely imputed to us of God; that it brings us into a state of most blessed peace and favor with God, and secures every other blessing needful for time and eternity.

6. OF THE FREENESS OF SALVATION

We believe that the blessings of salvation are made free to all by the Gospel; that it is the immediate duty of all to accept them by a cordial penitent and obedient faith; and that nothing prevents the salvation of the greatest sinner on earth, but his own inherent depravity and voluntary rejection of the Gospel; which involves him in an aggravated condemnation.

7. OF GRACE IN REGENERATION

We believe that in order to be saved, sinners must be regenerated, or born again; that regeneration consists in giving a holy disposition to the mind; that it is effected in a manner above our comprehension by the power of the Holy Spirit, in connection with Divine truth, so as to secure our voluntary obedience to the Gospel; and that its proper evidence appears in the holy fruits of repentance, and faith, and newness of life.

8. OF REPENTANCE AND FAITH

We believe that Repentance and Faith are sacred duties, and also inseparable Graces, wrought in our souls by the regenerating Spirit of God; whereby being deeply convinced of our guilt, danger and helplessness, and of the way of salvation by Christ, we turn to God with unfeigned contrition, confession, and supplication for mercy; at the same time heartily receiving the Lord Jesus Christ as our Prophet, Priest and King, and relying on Him alone as the Only and All-sufficient Saviour.

9. OF GOD'S PURPOSE OF GRACE

We believe that Election is the Eternal purpose of God, according to which He graciously regenerates, sanctifies, and saves sinners; that being perfectly consistent with the free agency of man, it comprehends all the means in connection with the end; that it is a most glorious display of God's Sovereign Goodness, being infinitely free, wise, holy and unchangeable; that it utterly excludes boasting, and promotes humility, love, prayer, praise, trust in God, and active imitation of His free mercy; that it encourages the use of means in the highest degree; that it may be ascertained by its effects in all who truly believe the Gospel; that it is the foundation of Christian assurance; and that to ascertain it with regard to ourselves demands and deserves the utmost diligence.

10. OF SANCTIFICATION

We believe that Sanctification is the process by which, according to the Will of God, we are made partakers of His Holiness; that it is a progressive work; that it is begun in regeneration; and that it is carried on in the hearts of believers by the presence and power of the Holy Spirit, the Sealer and Comforter, in the continual use of the appointed means—especially, the Word of God, self-examination, self-denial, watchfulness and prayer.

11. OF THE PERSEVERANCE OF SAINTS

We believe that such only are real believers as endure unto the end; that their persevering attachment to Christ is the grand mark which distinguishes them from superficial professors; that a special Providence watches over their welfare; and they are kept by the power of God through faith unto salvation.

12. OF THE HARMONY OF THE LAW AND THE GOSPEL

We believe that the Law of God is the eternal and unchangeable rule of His moral government; that it is holy, just, and good; and that the inability which the Scriptures ascribe to fallen men to fulfill its precepts, arises entirely from their love of sin; to deliver them from which, and to restore them through a Mediator to unfeigned obedience to the holy Law, is one great end of the Gospel, and of the Means of Grace connected with the establishment of the visible Church.

13. OF THE GOSPEL CHURCH

We believe that a visible Church of Christ is a Congregation of baptized believers, associated by Covenant in the faith and fellowship of the Gospel; observing the Ordinances of Christ; governed by His Laws; and exercising the gifts, rights, and privileges invested in them by His Word; that its only Scriptural officers are Bishops or Pastors and Deacons, whose qualifications, claims, and duties are defined in the Epistles to Timothy and Titus.

14. OF BAPTISM AND THE LORD'S SUPPER

We believe that Christian baptism is the immersion in water of a believer, into the Name of the Father, and Son, and Holy Ghost; to show forth in a solemn and beautiful emblem, our faith in the crucified, buried, and risen Saviour, with its effects, in our death to sin and resurrection to a new life; that it is a pre-requisite to the privileges of a Church relation; and to the Lord's Supper, in which the members of the Church by the sacred use of bread and wine, are to commemorate together the dying love of Christ; preceded always by solemn self-examination.

15. OF THE CHRISTIAN SABBATH

We believe that the first day of the week is the Lord's Day, or Christian Sabbath; and is to be kept sacred to religious purposes, by abstaining from all secular labor and sinful recreations, by the devout observance of all the means of Grace, both private and public; and by preparation for that rest that remaineth for the people of God.

16. OF CIVIL GOVERNMENT

We believe that Civil Government is of Divine appointment, for the interests and good order of human society; and that magistrates are to be prayed for, conscientiously honored, and obeyed; except only in things opposed to the Will of our Lord Jesus Christ, Who is the only Lord of the conscience, and the Prince of the kings of the earth.

17. OF THE RIGHTEOUS AND THE WICKED

We believe that there is a radical and essential difference between the righteous and the wicked; that such only as through faith are justified in the Name of the Lord Jesus, and sanctified by the Spirit of Our God, are truly righteous in His esteem; while all such as continue in impenitence and unbelief are in His sight wicked, and under the curse; and this distinction holds among men both in and after death.

18. OF THE WORLD TO COME

We believe that the end of this world is approaching; that at the Last Day, Christ will descend from heaven, and raise the dead from the grave to final retribution; that a solemn separation will then take place; that the wicked will be adjudged to endless punishment, and the righteous to endless joy; and that this judgment will fix forever the final state of men in heaven or hell, on principles of righteousness.

CONSTITUTION**Article 1—Name**

This Organization shall be known as the SUWANNEE MISSIONARY BAPTIST ASSOCIATION.

Article 2—Purpose

The Purpose of this Association shall be: To furnish a medium of Co-operation for the Churches of the Association in their Divinely commissioned work of Missions, Education, and Benevolences; and to this end we seek to bring into co-operative fellowship the energies of our Churches; and to secure the moral and financial support of our Churches for the Objects and Institutions fostered by the Florida Convention of Baptist Churches, and the Southern Baptist Convention.

Article 3—Churches

The Constituents of this Association shall be Missionary Baptist Churches of regular order, presenting petitionary letters from other Associations in due form; and Churches which may be constituted within the bounds of the Association, presenting proper credentials of organization and Articles of Faith, accompanied by properly accredited Messengers.

Article 4—Messengers

This Association shall be composed of Messengers holding membership in the Churches which constitute the Association; these Messengers having been duly elected by their respective Churches on the following basis: Each Church shall be entitled to Three Messengers without reference to their numerical strength; and one additional Messenger for each Twenty-five members or fraction thereof, after it has attained a membership of Fifty members.

Article 5—Officers

The Officers of this Association shall be: A Moderator, a Vice-Moderator, a Clerk, and a Treasurer; who shall be elected annually by ballot at the beginning of each Annual Meeting of the Association; and no person shall be elected Moderator for more than two consecutive years.

Article 6—Meetings

1. This Association shall meet Annually, Thursday and Friday after the second Sunday in October; at such Time and Place as the Association shall have selected at its last Annual Session.

2. In addition to the Annual Meeting, there shall be held a Union Meeting each Fifth Sunday; the Time, Place, and Program to be provided for by the Executive Committee.

3. In the event of an emergency, the Executive Committee is authorized to make changes in the Time and Place for the Annual Meeting, as will best serve the interests of the Association.

Article 7—Amendments

The Constitution and By-Laws of the Association may be amended at any Annual Meeting of the Association, by a two-thirds majority vote of the Messengers.

BY-LAWS**Section 1—Duties of Officers**

1. The Duties of the Moderator shall be to preside, preserve order, and appoint all Committees not otherwise provided for in the Constitution and By-Laws.

2. The duties of the Vice-Moderator shall be to assist the Moderator; and to preside in the absence of, or at the request of, the Moderator.

3. The Clerk shall keep a correct record of the proceedings of the Association; supervise the printing and distribution of the Minutes; keep a regular file of the published proceedings of the Association; and deliver same with other material belonging to the office to his successor.

The Clerk shall send to the clerks of the Churches of the Association the Associational Letter Form Blanks thirty days prior to the Annual Meeting; also the material to the Chairmen of the Standing Committees, who are to submit reports of our work at the Annual Session.

The Clerk shall notify after the adjournment of the Association, all Persons, Committees, and Chairmen of the Standing Committees, of their elections or appointments of service.

The Clerk shall receive remuneration for his services, the sum to be fixed by the Association at each Annual Meeting; also he shall receive additional funds from the Association for the expenses of his office.

4. The Treasurer shall keep a correct record of all Associational Funds received and disbursed by his Office; and shall submit a record of all transactions of his Office to the Association at its Annual Meeting. The Treasurer shall be the Chairman of the Finance Committee.

5. The duties of the Executive Committee shall be to transact all business of the Association between its Annual Meetings; and a written report of its work shall be submitted to the association at its Annual Session.

The Executive Committee shall elect its own Chairman and Clerk; and fix the Time and Place for its Meetings between the Annual Sessions of the Association.

In the event a vacancy occurs in any office of the Association between the Annual Meetings; the Executive Committee is authorized to fill such vacancy for the unexpired term of office; if not otherwise provided for in the Constitution and By-Laws.

Section 2—Committees

1. The Standing Committees of the Association shall be: 1—Executive Committee; 2—Order of Business; 3—State Missions; 4—Home Missions; 5—Foreign Missions; 6—Religious Literature; 7—Christian Education; 8—Sunday Schools; 9—Baptist Training Union; 10—Woman's Missionary Union; 11—Laymen's Work—Brotherhood; 12—Florida Baptist Children's Home; 13—Ministerial Relief and Annuities; 14—Social Service. Also other Committees as the Association shall deem advisable.

2. The Special Committees of the Association shall be: 1—Nominations; 2—Finance; 3—Resolutions; 4—Obituaries; 5—Digest of Letters—State of Religion. Also other Committees as the Association shall deem advisable.

Section 3—Committees. Appointment Of

1. All Standing Committees shall consist of Three Members; who shall be appointed by the Moderator; the Chairman being selected in advance; the others at each Annual Session.

2. All Special Committees shall consist of not less than Three nor more than Five Members; who shall be appointed by the Moderator at each Annual Session.

3. The Committees on Order of Business shall consist of Three Members; Two of which shall be the Moderator and the Chairman of the Executive Committee; the third member shall be appointed by the Moderator at each Annual Meeting.

The Executive Committee of this Association shall be composed of:

1. One member from each church elected by the church and reported to the association in the regular church letter each year; provided, that for the ensuing year (1940) each church shall at its regular service after this meeting of the association, elect one of its members to serve on the Executive Committee and shall report the name and address of this elected member to the Moderator and Clerk of the association.

2. The pastor of each and every church in the association.

3. The presiding officer of each associational organization.

The Executive Committee shall meet on the Second Tuesday p. m. of each of the months of December, March, June, and September at a place that may be decided by the committee itself.

The officers of the Executive Committee, together with the presiding officers of the associational organizations, shall constitute a Steering Committee that shall have the power to transact any business of the association that may be necessary during the time between the regular meetings of the Executive Committee; providing, that in the event the association is not organized as indicated above, then the Steering Committee shall be composed of the officers of the Executive Committee and four other such members of the Executive Committee as shall be elected by the Executive Committee.

The Steering Committee shall meet once each month or as often as the Chairman may call it into session.

Section 4—Committees. Duties Of

1: The duties of the Standing Committees and the Special Committees, shall be those which are commonly understood, and observed by Baptist Associations and Conventions, as suggested by their names.

2. The duties of the Committee on the Order of Business shall be to prepare the Program for each Annual Meeting; and to select the Speakers not otherwise provided for in the Constitution and By-Laws.

3. The duties of the Nominating Committee shall be:

To name the Time and Place for the Annual Meeting.

To name the Preachers and Alternates for the Annual Introductory and Missionary Sermons.

To name the Associational Messengers to the Florida Baptist Convention.

All nominations subject to adoption by the Association.

Section 5

The Association shall have an Introductory and a Missionary Sermon at each Annual Meeting, on the first and second days respectively; the hours for the sermons to be provided for in the Order of Business.

Section 6

The fiscal year of the Association shall begin October first of each year, and end September thirtieth of the following year, both dates inclusive; and all reports to the Association shall conform to these dates.

Section 7

All written reports of Committees shall be limited to a maximum of six hundred words; and the Clerk is authorized if necessary, to edit reports to conform to this word limitation.

Section 8

When a Church fails to send an Annual letter, the Clerk shall use the report of the previous year, with reference only to record of membership of Church and organizations.

Section 9

The Association requests that Church clerks prepare and mail to the Clerk of the Association their Annual Church Letter, ten days before the Annual Meeting.

Section 10

The Parliamentary Law which shall be used by this Association in the government of its business proceedings, shall be Kerfoot's Parliamentary Law.

It is also understood, that this Association shall ever adhere to the Principles and Practices of recognized Baptist Policies in all its procedures, its methods, and its work.

DIRECTORY OF ASSOCIATION

OFFICERS OF ASSOCIATION

Rev. W. T. Newsome, Moderator Live Oak, Fla.
 H. J. Horne, Vice-Moderator Live Oak, Fla.
 G. L. Dorman, Clerk and Cor. Sec. Live Oak, Fla.
 R. E. Hatch, Treasurer Branford, Fla.

EXECUTIVE BOARD MEMBERS

Rev. W. T. Newsome, Chairman Live Oak, Fla.
 H. J. Horne Live Oak, Fla.
 G. L. Dorman Live Oak, Fla.
 R. E. Hatch Branford, Fla.
 Mrs. C. E. Lawrence Falmouth, Fla.
 Rev. C. L. Clemons Lake City, Fla.
 Rev. W. H. Gray Live Oak, Fla.
 Rev. S. F. Young Lake City, Fla.
 Rev. H. H. Link Branford, Fla.
 Rev. T. J. Ellis Live Oak, Fla.
 Rev. John Collins Cherry Lake, Fla.
 Rev. D. M. Wheeler Live Oak, Fla.
 Rev. H. O. Hughes Jasper, Fla.
 Rev. John E. Evans Live Oak, Fla.
 Rev. E. H. Holcomb Live Oak, Fla.
 Rev. R. W. Henry Live Oak, Fla.
 Rev. A. M. Parker Mayo, Fla.
 Rev. A. H. Townsend Perry, Fla.
 Rev. W. B. Liston Branford, Fla.
 Rev. A. B. Franklin Live Oak, Fla.

ASSOCIATIONAL MISSIONARY OR PAID EMPLOYE

Rev. W. H. Gray, Associational Missionary Live Oak, Fla.
 No other paid employe.

COMMITTEE CHAIRMEN TO REPORT IN 1940

Sunday School J. L. McMullen, Live Oak, Fla.
 Woman's Missionary Union Mrs. C. E. Lawrence, Falmouth, Fla.
 Baptist Training Union Malcolm Tompkins, Live Oak, Fla.
 Brotherhood J. A. Johnson, Live Oak, Fla.
 Orphanage H. J. Horne, Live Oak, Fla.
 State Missions T. J. Ellis, Live Oak, Fla.
 Home Missions A. B. Franklin, Live Oak, Fla.
 Foreign Missions W. C. Taylor, Jennings, Fla.
 Cooperative Program H. O. Hughes, Jasper, Fla.
 Hundred Thousand Club E. T. Horne, Live Oak, Fla.
 Christian Education Miss Fanny Duncan, Branford, Fla.
 Religious Literature Mrs. J. L. McDaniel, Jennings, Fla.
 Social Service W. M. Hogan, Live Oak, Fla.
 Ministerial Relief and Annuities J. H. Goff, McAlpin, Fla.
 Obituaries W. C. Crews, Pine Mount, Fla.
 Finance R. E. Hatch, Branford, Fla.
 Digest of Letters G. L. Dorman, Live Oak, Fla.
 Resolutions R. M. Bush, Jennings, Fla.
 Nominations J. E. Evans, Live Oak, Fla.

NEXT SESSION

Live Oak Baptist Church, Live Oak, Fla. October 17-18, 1940

SERMONS

Introductory Sermon H. H. Link, Branford, Fla.
 Alternate A. B. Franklin, Live Oak, Fla.
 Missionary Sermon W. T. Newsome, Live Oak, Fla.
 Alternate T. J. Ellis, Live Oak, Fla.

MESSENGERS TO FLORIDA BAPTIST CONVENTION

A. M. Parker Mayo, Fla.
 A. H. Townsend Perry, Fla.
 W. H. Gray Live Oak, Fla.

OFFICERS OF ASSOCIATIONAL WOMAN'S AUXILIARY

Mrs. C. E. Lawrence, President Falmouth, Fla.
 Mrs. Frank Bamberg, Vice-President Jasper, Fla.
 Mrs. W. T. Newsome, Sec. & Treas. Live Oak, Fla.
 Mrs. J. H. Corbett, Supt. Hamilton Co. Jasper, Fla.
 Mrs. Alex Goff, Supt. Suwannee Co. Live Oak, Fla.
 Mrs. M. H. Bagley, Young Peoples Director Jasper, Fla.

CHAIRMEN OF W. M. U. COMMITTEES TO REPORT IN 1940

Personal Service Mrs. Malcolm Tompkins, Jennings, Fla.
 Hundred Thousand Club Mrs. B. G. Bell, Falmouth, Fla.
 Margaret Fund Mrs. Robert Tuten, Jennings, Fla.
 Training School Mrs. J. T. Blanchard, Live Oak, Fla.
 Stewardship Mrs. T. J. Fletcher, O'Brien, Fla.
 Publicity Mrs. J. A. Scaff, Jasper, Fla.
 White Cross Mrs. Geo. R. Carver, Branford, Fla.
 Mission Study Mrs. G. C. Bryant, Live Oak, Fla.
 Members Children Home Aux. Mrs. A. W. Ross, Live Oak, Fla.
 Members at Large Mrs. H. H. Link, Branford, Fla.
 Mrs. D. J. Mills, Live Oak, Fla.

The place of the Associational W. M. U. meeting (1940 session) is to be selected by Executive Committee and time to be set by Miss Louise Smith, State Secretary.

WE HAVE NO ASSOCIATIONAL SUNDAY SCHOOL CONVENTION, BAPTIST ASSOCIATIONAL TRAINING UNION, REPRESENTATIVES OF BROTHERHOOD, BAPTIST SCHOOLS, HOSPITAL, ENCAMPMENT OR ORPHANAGE, STATE OR SOUTH-WIDE BOARD OR INSTITUTION WITHIN THE BOUNDS OF THE SUWANNEE BAPTIST ASSOCIATION.

AUXILIARY MEETING W. M. U.

W. M. U. meets annually, place to be selected by the executive committee. Time by Miss Louise Smith for the 1940 session. Full report given elsewhere in this book under W. M. U. report.

WE HAVE NO OTHER ASSOCIATIONAL AUXILIARY MEETINGS WITHIN THE BOUNDS OF THIS ASSOCIATION.

LIST OF MESSENGERS 1939 SESSION

ANTIOCH—F. B. Brinson, J. D. Sapp.
BELLEVILLE—No Messengers.
BETHEL—No Messengers.
BEULAH—P. T. Jordan, G. D. Lyons, J. A. Wilder, W. J. Starling.
BRANFORD—Mrs. J. I. Duncan, R. E. Hatch, Mrs. H. J. Granger, Mrs. T. A. Crews.
BRIGHT POND—B. M. Smith, T. E. Clardy, Mrs. T. E. Clardy, Warren Byrd, Loveda Smith, Beulah Rae Smith.
CLAYLAND—C. A. Landen, J. D. Carmichael, Mrs. Lottie Brim, Mrs. Ethel Hart, Mrs. Doris Hart.
CORINTH—H. Burnett, Mrs. H. Burnett, Mrs. Eula Morgan.
DIVONIA—W. A. McCall, Howard McCall, Fannie McCall, Mrs. J. W. McCall.
FRIENDSHIP, HAMILTON—No Report.
FRIENDSHIP, SUWANNEE—C. L. Jenkins, C. S. McDaniel, Earnest Floyed.
JASPER—Harry T. Reid, Miss Mamie Griffin, Mrs. Grace McGeehee, H. O. Hughes, Mrs. H. O. Hughes, Mrs. M. H. Bagley.
JENNINGS—Rev. W. C. Taylor, Mrs. W. C. Taylor, W. A. Beaty, Geo. H. Perry, Mrs. J. L. McDaniel.
LIVE OAK—Rev. J. E. Evans, Mrs. J. E. Evans, Dr. G. A. Lee, J. A. Johnson, S. C. Kierce, Rev. W. T. Newsome, Mrs. W. T. Newsome, F. W. Brenan, Mrs. F. W. Brenan, Mrs. W. T. McCullers.
MARY BELLE—Lavergue Mixon, Elmer Mixon, Hosie Mixon, Harvey Mixon, D. G. Carroll.
MT. GILEAD—Mrs. D. T. O'Hara, Miss Iris Bland, Mrs. C. A. Griffin.
MT. OLIVE—W. M. Hogan, H. V. Johns, Mrs. Roy Knight, Thomas Zipperer, Glenn Smith.
MT. PISGAH—J. S. Williams, H. T. Howell, Mrs. H. T. Howell, Lauton Carver, Mrs. Lauton Carver, Clayton Crews.
NEW HOPE—J. E. Bland, Kate Bland, Cladis Bland, R. J. Bush, R. H. Holton, Luna Holton, Christine Holton, Mrs. M. J. Herring.
NEW PROSPECT—No Report.
O'BRIEN—Mrs. T. J. Fletcher, Mrs. C. W. Haynes, C. W. Haynes, Mrs. Gillie Jenkins, J. M. Kite, Mrs. Josie Kite Ford.
ORANGE—W. H. McMannoway, Mrs. Metta McMannoway, G. B. Landen, Mrs. G. B. Landen, H. W. Clark, Mrs. J. M. N. Clark.
PHILADELPHIA—Mrs. W. S. Ward, Mrs. A. W. Ross, Mrs. Henry Johnson, D. G. Gamble, Mrs. D. G. Gamble, Ira Moore, Mrs. Ira Moore.
PINE LEVEL—E. S. Palmer, Mrs. M. J. Lepper, Mrs. A. E. Lepper.
PINE MOUNT—H. L. Prevatt, Mrs. H. L. Prevatt, Maurice Burnett.
PLEASANT HILL—E. C. Gornto, E. W. Bozeman, Wilmer Goff, Lavaughn Sessions.
ROCKY SINK—T. D. Tison, Mrs. Jewell Scott, Mrs. Mae Scott, Gus Brown.
ROSE MARY—W. C. Clemons, Frank Jenkins.

SHADY GROVE—Fred Bray, Mrs. Fred Bray, W. L. Poole, Mrs. W. L. Poole, Jim Stewart, Mrs. Jim Stewart, Rev. E. H. Holcomb, Mrs. E. H. Holcomb, Jim Tippet.

SUWANNEE—T. J. Phillips, Allen Hill, Proctor Phillips, Mrs. Earl Short.

TIGER LAKE—L. L. Robinson, Mrs. H. J. Horne, H. J. Horne, J. R. Mills, J. M. Robinson, Mrs. Spivey McLeod.

UNION—W. H. Holmes, Mrs. T. H. Holmes.

VISITORS

Rev. W. H. Evans, Baldwin County Association, Alabama. Dr. W. L. Head, Mrs. W. L. Head, Atlanta, Ga. Dr. E. D. Solomon, editor Florida Baptist Witness, Jacksonville, Fla. Mrs. Foster Daugherty, North East Florida Association. Prof. T. M. Johns, superintendent of Orphanage, Arcadia, Fla. Dr. Harrison Griffin, State Evangelist Brotherhood Leader. Rev. W. B. Liston, Lafayette Association. E. H. Hartwell, Alachua Association.

PROCEEDINGS**Sixty-Eighth Annual Session****Suwannee Baptist Association****Held With****Branford Baptist Church****Branford, Florida****FIRST DAY—THURSDAY, OCTOBER 12th, 10:00 A. M.**

1. The Suwannee Baptist Association met in its sixty-Eighth Annual Session with the Branford Baptist Church, Branford, Florida, Thursday, October 12, 1939. Promptly at 10:00 A. M. the Moderator, Rev. W. T. Newsome, called the meeting to order.
2. After a hymn was sung, Rev. W. T. Newsome opened this session by reading 116th Psalm. Dr. John E. Evans led in prayer.
3. Motion made and carried that the Moderator delay his address until later.
4. Motion made and carried that all messengers present and those to come later compose this session of the Association.
5. The following officers were elected without opposition: Rev. W. T. Newsome, Moderator, H. J. Horne, Vice-Moderator, G. L. Dorman, Clerk and Cor. Sec., R. E. Hatch, Treasurer.
6. A motion was made and carried that the order of business as read be adopted.
7. Dr. John E. Evans presented a very nice gavel to the Moderator of our association. This gavel is to be passed to the future Moderators of our Association.
8. Report of Executive Committee read by S. C. Kierce, as follows:

REPORT OF EXECUTIVE COMMITTEE

The three outstanding jobs completed by the Executive Committee this year were:

First: The annual Bible conference held at the Live Oak Baptist Church for benefit of our pastors, deacons and laymen. The conference was well attended, and it seemed that our churches had been benefited by the excellent work which our leaders have been giving to the churches represented.

Second: Arranged for and assisted Brother O. K. Radford in bringing a bus load of helpers into the Association to conduct Sunday School and B. Y. P. U. Study Courses over the entire Association. Some of the churches had never had a Study Course, but took advantage of this opportunity. Some churches had two workers, and had several study courses and enlargement campaign. This type of work should develop leadership and make church work more interesting and more active than anything else which could be offered our members.

Third: The carload of produce was assembled and shipped to the Florida Baptist Children's Home at Arcadia. Brother T. M. Johns, Superintendent, wrote us several letters, thanking us for this produce. One of the boys from the home drove the truck up after the produce, and it was a great joy to hear this boy telling, in his own way, how the other children at the home would enjoy unloading the produce and enjoy using the things which we gave in the form of produce and wearing apparel.

We have advocated and worked toward our churches getting the relief and annuity program begun, as this will help each pastor and church which is co-operating. Any further assistance any individual can give in this matter should be rendered as quickly as possible.

We have other worthy projects which have been begun and either completed or in the state of completion.

Respectfully submitted,
S. C. KIERCE,
Chairman Executive Committee.

Report adopted.

9. The following committees were appointed by the Moderator to report at this session of the Association:

Co-operative Program

Rev. A. M. Parker, Chairman, T. J. Fletcher, M. A. Best.

State Missions

R. M. Bush, Chairman; H. T. Howell, J. H. Goff.

Home Missions

Rev. H. H. Link, Chairman; G. H. Perry, Mrs. P. O. Strickland.

Foreign Missions

Rev. H. O. Hughes, Chairman; J. G. Brim, C. G. Howell.

Evangelism

Dr. John E. Evans, Chairman; H. O. Hughes, W. H. Gray.

Woman's Missionary Society

Mrs. J. L. McDaniel, Chairman; Mrs. A. P. Goff, Mrs. R. E. Hatch.

Hundred Thousand Club

Miss Hattie Platt, Chairman; J. M. Robinson, J. M. N. Clark.

Finance

R. E. Hatch, Chairman; D. J. Mills, S. C. Kierce.

Christian Education

Mrs. John E. Evans, Chairman; Mrs. J. H. Goff, Mrs. F. D. Phillips.

Florida Baptist Children's Home

Clyde M. Harrell, Chairman; W. M. Hogan, Miss Carmen Toole.

Religious Literature

R. E. Hatch, Chairman; A. A. McInnis, A. B. Franklin.

Sunday School

S. C. Kierce, Chairman; H. V. Johns, T. A. Knight.

Baptist Training Union

Mrs. C. E. Lawrence, Chairman; Miss Fannie Duncan, Miss Hazel Burnham.

Brotherhood-Laymen's Work

Dr. G. A. Lee, Chairman; T. J. Ellis, A. O. Dorsett.

Ministerial Relief & Annuities

Rev. W. H. Gray, Chairman; J. M. Kite, R. J. Bush.

Social Service

Mrs. T. J. Fletcher, Chairman; J. W. Jenkins, B. M. Smith.

Nominations

Dr. John E. Evans, Chairman; A. W. Ross, H. O. Hughes.

Resolutions

Rev. H. O. Hughes, Chairman; W. C. Taylor, J. Q. Boatright.

Obituaries

E. T. Horne, Chairman; G. R. Carver, F. W. Brennan.

Digest of Letters

H. J. Horne, Chairman; A. H. Townsend, A. M. Parker.

10. Visitors were welcomed and enrolled (See list following list of messengers 1939 session.)

11. Rev. W. T. Newsome made an oral report of our work in the association, and also outlined the work that can be done in the future.

12. After prayer by Dr. W. L. Head, Dr. John E. Evans made a very interesting report on Evangelism.

13. The Moderator announced that the hour had arrived for the Introductory Sermon. After singing Rev. W. H. Gray brought the message of the hour. The subject being "Hidden Treasurer" using as a text Matthew 13:44. Adjourned for lunch.

THURSDAY AFTERNOON 1:30 P. M.

14. After singing a song "Must Jesus Bear the Cross Alone" the Moderator called the association to order. Rev. H. O. Hughes led in prayer.

15. Dr. Harrison Griffin, our State Evangelist Brotherhood leader, made a very interesting talk on the work in our state and telling us the great need of the work.

16. Report on Sunday Schools read by S. C. Kierce, as follows:

REPORT ON SUNDAY SCHOOLS

Records show Florida has 797 Baptist Churches. It has 767 Baptist Sunday Schools and 52 Churches without any Sunday Schools. Our Baptist Churches baptized during 1938, 9,186. It is believed that about 85 per cent of the baptisms came from classes in the Sunday Schools, or 7,808, leaving about 1,378 baptisms that did not attend Sunday School.

There is not an Associational organization for Sunday Schools in the Suwannee Baptist Association. We have 32 Churches, of which 24 have Sunday Schools. This leaves 8 without a Sunday School. We had approximately 20

teacher-training courses during the past year, and approximately 150 awards to those taking courses in teacher-training classes.

We were very proud that Mr. O. K. Radford of our Mission Board could bring a bus-load of helpers into the Association, and teach 316 pupils and teachers in 11 different Churches in Sunday School activities. This will be of great benefit for several years to come, and is one of the most forward steps we have ever attempted.

Of the 35 Associations in Florida, there are only 8 which do not have an Associational organization for Sunday School. Suwannee Association is one of the 8. This is something that we need, and we believe it will enhance Sunday School activities if we could have Associational Sunday School organization, where we could meet regularly and discuss problems in Sunday School work, and have some of our State leaders teach and assist us.

Respectfully submitted,
S. C. KIERCE, Chairman
H. V. JOHNS
T. A. KNIGHT

17. Report spoken on by S. C. Kierce and adopted.

18. Report of W. M. U. was read by Mrs. J. L. McDaniel. See report under W. M. U. section of the minutes. Report adopted.

19. Report on Baptist Training Union read by Mrs. C. E. Lawrence, as follows:

REPORT ON BAPTIST TRAINING WORK

Number of churches in Suwannee Baptist Association	32
Number of churches having Training Union work	20
Number of churches with no Training Union work	12
Number Adult Unions	2 - 1
Number Senior Unions	19
Number Intermediate Unions	8
Number Junior Unions	8
Number Story Hours	1
Total Number of Unions in Association	38
Number of churches receiving Study Course awards	11
Number of churches receiving no Study Course awards	21
Total Number of awards issued into our Association during the period from January 1-September 30, 1939	161

We are glad to report that there are above 2,000 units of the Training Union in all of the churches in Florida. The total enrollment of these units in the state is 33,000. The total enrollment in Baptist Training Unions throughout the Southern Baptist Convention is above 800,000.

With all of our glorious achievements, we face a tremendous problem. On every hand we see churches having additions, but in so many cases these new converts are not being enlisted in any form of service. We desire to recommend to all of our churches in the Suwannee Association that they make plans to conserve all of the new additions coming into our churches by having a vigorous training program going on in the church at all times.

Respectfully submitted,
MRS. C. E. LAWRENCE, Chairman
HAZEL BURNHAM
MISS FANNIE DUNCAN
Committee

Report adopted.

20. Report on the Florida Baptist Children's Home read by C. M. Harrell, as follows:

FLORIDA BAPTIST CHILDREN'S HOME

We are reminded by the Holy Scriptures that we are to care for one another. The early Christians assisted each other when in need or distress. The example they set and the teachings of our Lord call to our attention in a most forceful way the importance of caring for the dependent children of our denominational household.

Our Children's Home puts forth a determined effort to give every child who is admitted definite help in the truest sense of the word. They are taught to work; they are sent to school; and they are given social privileges just as all normal children should have.

The work of the girls at the Home enables them to know a great deal about cooking, housekeeping, laundry work; office work, library work, and planning and serving meals. The boys also from their work on the campus learn the essentials in farming, dairying, and caring for live stock; and how to operate the steam laundry. The training they get in the printing department, makes it possible for them, if they are interested, to follow this as a vocation.

The equipment for this work must be constantly repaired; and this is done from the income from soap coupons sent to them from the W. M. U. and other organizations in the State. New fixtures are also bought from this coupon account. They have bought a mixing machine for the bakery this year, and they hope to get enough money from this account this winter to renew some much worn equipment.

The children attend the city schools in Arcadia; and for those who are capable of continuing their education above high school accomplishments, the Student Loan Fund has been established. The successes of the children who have taken advantage of this loan fund have been very gratifying. We feel that this is a splendid service to render to any child who has an active, capable mentality, and personality, to fit themselves for jobs that require higher education and more definite training.

The children from the Home attend the Sunday School, the B. T. U. and preaching services at the First Baptist Church in Arcadia. Twenty-two of them united with this church this year.

The outstanding need of the Home is for more general support. The 155 children enrolled could be increased by at least twenty if the funds were available. They need to employ another house mother to assist with the Junior and Senior girls. Two matrons are caring for sixty-eight girls. This is entirely too many children for two workers, and nothing can be done about this overcrowding in dormitories unless we help them.

Your Committee wishes to recommend to the churches of this Association that they give prayerful consideration to the needs of our children, and lend the necessary aid that they may be helped in making useful men and women.

Respectfully submitted,

C. M. HARRELL, Chairman
MISS CARMEL TOOLE
W. M. HOGAN

21. The report was spoken on by Supt. T. M. Johns who congratulated this association on the feed and food stuffs this association has been sending them and ask that we continue the offering each year.

Report adopted.

22. The future of the country church was ably discussed by Rev. H. H. Link.

23. The subject "The Baptist Conception of Religious Liberty" was discussed by Rev. H. O. Hughes.

Adjourned until 9:30 A. M. tomorrow.

SECOND DAY—FRIDAY, OCTOBER 13th, 9:30 A. M.

24. The Association was called to order by the Moderator. After singing a hymn, Rev. W. T. Newsome led the morning devotional by reading scripture found in Pslams 9, 14, 91. Rev. W. H. Holmes led in prayer.

25. Report on State Missions was read by H. T. Howell, as follows:

REPORT FOR STATE MISSIONS

Our State Mission Board was organized nearly sixty years ago for the purpose of combining the strength and energies of our people, and to help us carry out in a larger and more worthy manner the command of our Lord to give the gospel to the whole world. At the same time He instructed us to baptize believers and train them for service. Therefore, our State Mission work must always include both Evangelism and Training in its program.

Through our State Organization we are helping to win the lost to Christ by sending the gospel to destitute sections, and by helping to organize and grow more and greater churches, Sunday Schools and B. T. U.s; developing and training leaders from our groups of Spirit-filled young people. We cultivate stewardship and the Mission Spirit through our W. M. U. and Brotherhood departments, and through our Student workers seek to enlist in Christian service that large group of Baptist boys and girls found in our State Colleges and institutions.

We maintain a strong Evangelistic work in the State with two Evangelists giving full time to this sacred task, and others giving part time as their services may be in demand. We have supported this year 67 missionary pastors who have preached to 83 churches and mission stations including our Indian Work. We are also aiding 44 churches through our Building and Loan Fund.

Through State Mission funds we are also assisting a large group of aged preachers, or their widows. We also make possible the publication of the Florida Baptist Witness, the distribution of countless tracts to stem the tide of error and false doctrines flooding our land.

During 1938 we made some advances in our gifts to missions. The Treasurer's report made to the last State Convention showed that Florida Baptists gave to all missionary and benevolent causes for 1938 the splendid sum of \$208,342.04. Of this amount the Cooperative Program received \$116,384.86, which amount was distributed in accordance with the instructions of the Convention. All special gifts, which reached a grand total of \$91,993.18, were sent to the departments designated by the donors, without deducting one cent for expense of handling same.

Our Cooperative Program goal for this year has been set at \$135,000.00. Every church is urged to accept its part of the goal and send in all mission funds promptly and regularly to the office in Jacksonville. Florida Baptists should raise every dollar of the amount named in the goal before December 31st.

Our State Mission budget for the year is \$86,810.00. This is \$12,000.00 more than the budget of the previous year, and our State office assures us that every dollar put in the budget will be needed to carry the work through as planned for the year.

The Board depends on three sources for its income. First, the 34 per cent allocated from Cooperative Program receipts. Second, special gifts during October from the W. M. U. Week of Prayer, and the Sunday Schools. Third, a donation of \$6,500,000 from the Sunday School Board to assist in maintaining the Sunday School, B. T. U. and Student Work Departments.

RECOMMENDATIONS

1. We appeal to each church to increase its gifts to the Cooperative Program, and send in all mission funds at least at the close of each month. Full-time churches are requested to send in their funds every week.
2. We recommend that special efforts be made to enlist every member of every church in the full program of the church and denomination.
3. That we urge the use of the Every Member Canvass as a successful means for enlisting church members and securing a larger support for the church and denomination.
4. We recommend that we continue to press Evangelism along the same lines as of the past year, and that revival meetings be promoted in every church and community, and that more prayer and effort be made this coming year than heretofore.

R. M. BUSH, Chairman
H. T. HOWELL
J. H. GOFF

Committee.

Report adopted.

26. Report on Home Missions read by Rev. H. H. Link, as follows:

REPORT ON HOME MISSIONS

There can be little doubt as to what Christ is commanding His disciples to do. In the Great Commission Christ does not give a home mission program, nor a state mission program, nor a foreign mission program, but a world mission program launched from a home base.

BEGINNING FROM JERUSALEM

The mission program of Christ begins not "at" but "from" Jerusalem. Beginning "at" Jerusalem might denote only a point of departure, but "from" Jerusalem implies a base of operations. To begin our mission work "from" Jerusalem means to maintain an all-comprehensive victorious mission program at home as a means to world evangelization. Christ was a world citizen with a world mission. "The uttermost part of the earth" was His objective, but His homeland was the point of approach. We should follow Christ's method. If we would send the Gospel into all the world, we must have behind our efforts the resources and the vital life of an evangelized people.

We must evangelize our own land if we would push our conquest for Christ in lands afar. Home Missions is not, therefore, simply a matter of emotional concern or evangelistic zeal; it is an essential part of our world mission program for Christ. An evangelized homeland holds the key to the evangelization of the world.

GLORIOUS ACHIEVEMENTS

The Home Mission Board has functioned for ninety-four years in making missions real at home. The achievements have been glorious. During this period the Board has employed 44,000 missionaries and workers for one year or one missionary for 44,000 years. These missionaries have baptized 865,000 people, which is equal to one out of every five of our total number of church members. They have organized 8,600 churches. This is equal to one out of every three of our total number of churches.

The past year has been a year of glorious achievements for Home Missions. The Lord has richly blessed our missionaries in every field. The home Mission Board now has 371 missionaries working in 756 mission stations. During the past year 39 were added to the mission force. Sixty-four new mission stations

were opened and 20 chapels were acquired. The missionaries have distributed 29,226 Bibles, testaments, and portions of Scripture, and over 790,000 tracts. They have preached 29,454 sermons, led over 5,250 to make profession of faith in Christ, and have received into fellowship with the church 3,835.

INCREASING GIFTS TO HOME MISSIONS

The past year was one of the best financially in many years for the Home Mission Board. Receipts were larger than the year before. Marked progress was made in the payment of debts. The Board received from all sources \$513,841.80. The treasurer's report shows that \$163,660.89 was paid on the principal of the debt. A debt payment program has been mapped out which will liquidate all the debts of the Home Mission Board by 1945 provided receipts do not fall below the receipts of 1938.

SOUTHERN BAPTIST HOME MISSIONS

We would commend to our people **Southern Baptist Home Missions**, monthly publication of the Home Mission Board, as the most authentic source of information on Home Mission work, needs, and trends today. This fast-growing magazine, which continues to have an increase of nearly 1,000 subscribers a month until its present circulation is above 32,000, can be had for only 25c a year.

AN UNFINISHED TASK

The Home Mission task is larger, more difficult, and more important than ever before. Our social order is more complex, and there are more elements of disaster in it than ever before. A city problem has developed in the past few decades and is now challenging our immediate attention. The race problem, becoming more and more insistent, is a major mission program. Let the homeland become a leader in righteousness, and it will do more toward the restoration of peace, happiness, and prosperity among the nations of the world than it can ever do in economic and industrial fields.

REV. H. H. LINK, Chairman
G. H. PERRY
MRS. F. O. STRICKLAND
Committee

Report adopted.

27. Report on Foreign Missions read by Rev. H. O. Hughes, as follows:

FOREIGN MISSION REPORT

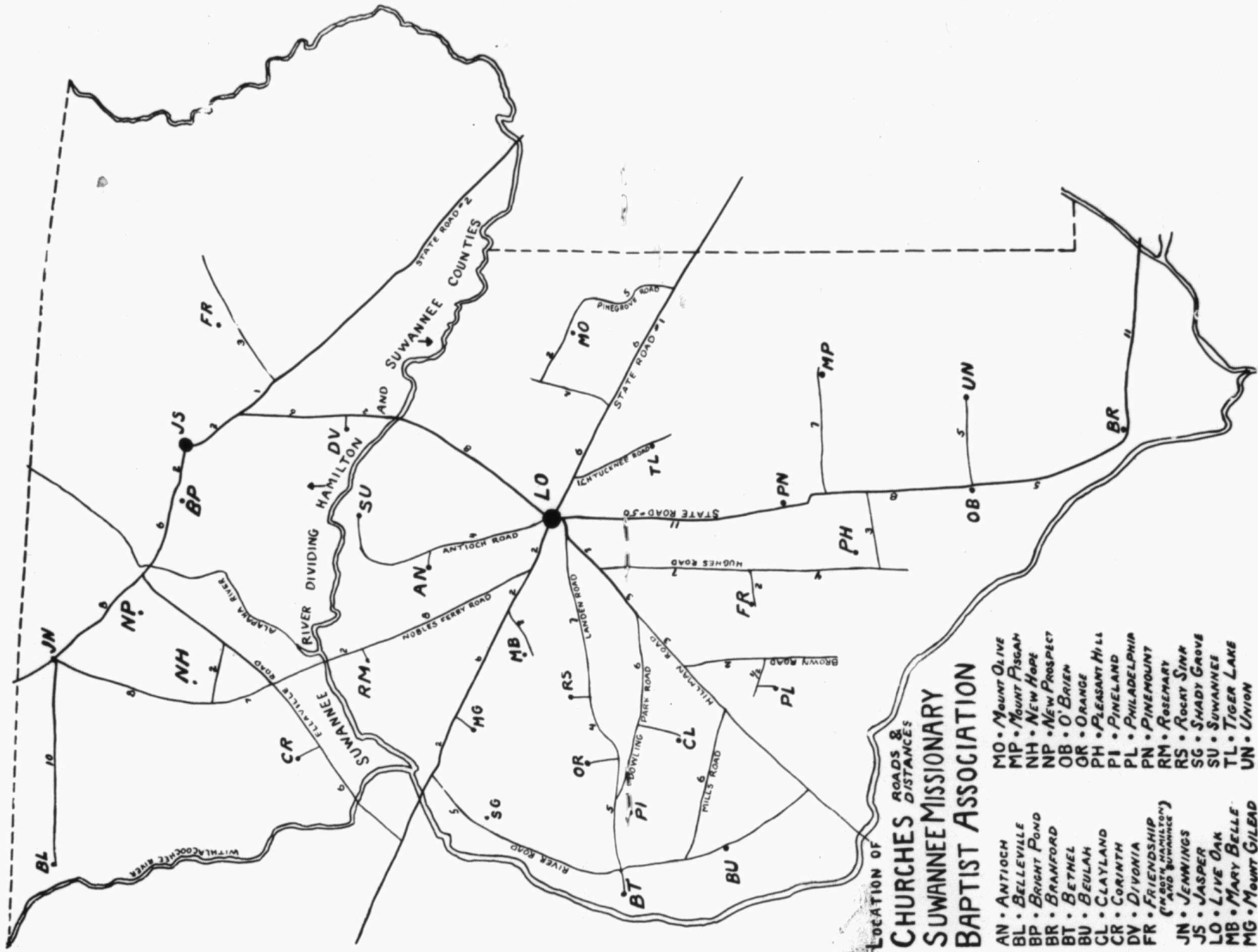
The world is filled with cruelty and strife; and the nations are arming rapidly for war. The one and only hope for the world is the Gospel of Christ; and where this Gospel is applied, it proves to be the solution for every problem, both of individuals and nations.

The foreign Mission Board has undertaken the task of giving the Gospel to the nations of the world. They now have 419 Missionaries on the Foreign Fields, in thirteen countries, and 1082 native workers. These fields have 1774 churches, of which 1053 are self-sustaining. They also have 3046 out-stations.

These churches have a membership of 214,975; and during the past year, 16,207 were baptized into the churches.

Last year the Foreign Mission Board received for all purposes, \$1,130,083.93. During the past six years the Board has paid on its debt, \$830,500.00. The Board now owes on its debt, \$275,000.00.

In 1938 the Lottie Moon offering was \$315,000.00. The salaries of 125 Missionaries are cared for out of this offering; and the remainder goes for training



- | | |
|---|--------------------|
| AN • ANTIPOCH | MO • MOUNT OLIVE |
| BL • BELLEVILLE | MP • MOUNT PISCAN |
| BP • BRIGHT POND | NH • NEW HOPE |
| BR • BRANFORD | NP • NEW PROSPECT |
| BT • BETHEL | OB • O'BRIEN |
| BU • BEULAH | OR • ORANGE |
| CL • CLAYLAND | PH • PLEASANT HILL |
| CR • CORINTH | PI • PINELAND |
| DV • DIVONIA | PL • PHILADELPHIA |
| FR • FRIENDSHIP
(IN BOTH HAMILTON
AND SUWANNEE) | PN • PINEMOUNT |
| JN • JENNINGS | RM • ROSEMARY |
| JS • JASPER | RS • ROCKY SPRING |
| LO • LIVE OAK | SG • SHADY GROVE |
| MB • MARY BELLE | SU • SUWANNEE |
| MG • MOUNT GILEAD | TL • TIGER LAKE |
| | UN • UNION |

schools in many lands, for building and repairs to missionary homes, chapels, schools, etc.

Property losses in China because of Japan's war on China, are \$600,000.00. Much suffering exists in China because of the war; both among the natives and missionaries. But they have nobly and heroically endured it all; knowing there is one thing war cannot destroy—and that is the Church of God. Christ is not going to lose; He is marching through the centuries to certain victory.

We recommend a continuation of our gifts and our prayers to the work of our Foreign Mission Board.

Respectfully Submitted,
H. O. HUGHES, Chairman
J. G. BRIM
C. G. HOWELL
Committee

Report adopted.

28. Report on Co-Operative program read by Rev. W. T. Newsome, as follows:

REPORT ON CO-OPERATIVE PROGRAM

We believe the Co-operative Program is a God given plan to Southern Baptists to carry out the great Commission of ours to the furthest ends of the Earth. Through this Program every phase of our work is supported, not as it should be yet, but we are making rapid progress toward the goal of success.

In Florida the Co-operative receipts are divided as follows: STATE CAUSES 55 per cent. State Missions, 34 per cent; Children's Home, Arcadia, 9 per cent; Stetson University, 5 per cent; Rogers Building, 5 per cent; Student Loan fund, 2 per cent; SOUTH WIDE CAUSES—45 per cent; Foreign Missions 22.5 per cent; Home Missions, 10.5 per cent; Relief and Annuity Board, 3.15 per cent; Education Board Debt, 1.5 per cent; Southern Baptist Seminary, 1.5 per cent; Southwestern Theological Seminary, 2.28 per cent; Baptist Bible Institute, 1.755 per cent; W. M. U. Training School, .24 per cent; American Baptist Theological Seminary, .45 per cent; New Orleans Hospital, 1.125 per cent; Total 100 per cent.

We stress the following points:

1. The Co-operative Program is the result of long study, much prayer, and large experience.
2. The Program seeks to enlist every member in the intelligent, enthusiastic, cheerful, and adequate support of every cause dear to the heart of our Saviour, and his people.
3. The Program seeks to build the Kingdom of God by winning the lost to Christ, building them in the faith, and enlisting them in the active service of Christ and Humanity. It seeks men rather than money; money is merely a means, Christian character, culture and consecration is the ultimate end.
4. The program will not work itself, no plan will. We must study, pray and work if the plan succeeds with us.
5. The best way to promote the Co-operative is to study the word of God on the subject of Christian stewardship, study the causes included in the program, and put on the every member canvass.
6. We must keep the fires of evangelism burning brightly all the year, our hearts must be kept warm if our lives are to be kept right and offerings worthy and sufficient.

RECOMMENDATIONS

We make the following recommendations:

1. That we approve the Co-operative program and pray God's blessings upon it, that all the causes of our Denomination may be supported in a worthy way.
2. That we urge all our churches to put on the every member canvass for both local and the Co-operative Program.
3. That each church be requested to observe a fair ratio in distributing its funds for local expenses and the Co-operative Program. The ideal ratio would be 50-50.
4. That all Co-operative program receipts and other denominational funds be remitted each month to Dr. C. M. Brittain, Rogers Building, Jacksonville, Fla.

Respectfully submitted,
A. M. PARKER, Chairman
T. J. FLETCHER
M. A. BEST

Committee

Above report adopted.

29. Report on Layman's Brotherhood read by clerk, as follows:

REPORT OF LAYMAN'S BROTHERHOOD

The following report was made to The First Baptist Church of Live Oak at its annual meeting held October 4th, 1939, by Mr. J. L. McMullen, president of the Layman's Brotherhood of the Live Oak Baptist Church:

"Brother Smith, President of the Brotherhood moved away from Live Oak during the early summer, and having been honored with the Vice Presidency of the organization, it was my pleasure to serve as acting president until now.

"The Brotherhood has done fine work during the past year. Many outstanding programs were arranged by the program committee, including the heads of some of our organizations in the state.

"Recently the Brotherhood entertained the wives and sweethearts which was a very enjoyable occasion.

"The attendance at the Brotherhood meeting, while being a little off, much enthusiasm has been shown in the interest of this good work.

"Every young and elderly man should attend every Brotherhood meeting possible."

The above report speaks for itself, and this being the only Layman's Brotherhood in the association this report is supposed to cover the Brotherhood work done this year in the association.

It occurs to your committee that this is a field in the association which should be given serious consideration. If there are churches which would put thought and concentrated effort on, and into, the work of Layman's Brotherhood, its a wonderful field for some real constructive Christian work.

Sincerely yours,

G. A. Lee, Chairman
A. O. DORSETT

Committee

Report adopted.

30. Report on Hundred Thousand Club read by Dr. John E. Evans, as follows:

REPORT ON HUNDRED THOUSAND CLUB

The Hundred Thousand Club furnishes a plan for the payment of all debts of the Baptist Denomination. This plan has worked nobly during the past few years, helping all of the agencies fostered by our people.

Fifteen of our churches co-operated this year in the Baptist Hundred Thousand Club, giving a total of \$1,579.18.

We recommend that our churches hold out until the end. This will enable us to have a debtless Denomination in the near future.

HATTIE PLATT, Chairman
J. M. N. CLARK
J. M. ROBINSON
Committee

Report adopted.

31. Report on Social Service was read by Mrs. T. J. Fletcher, as follows:

REPORT ON SOCIAL SERVICE

In seeking a solution for the problems created by the present day social conditions, let us remember that christianity believed in and practiced by our people will solve every problem that confronts the individual members of society as well as society itself. With this thought in view, may we give ourselves:

1. In the everyday practice of Christian principles of living.
2. To abstain from the practice of those things which do not lift us up, but rather cast us down.

Let us strive as never before to span the seemingly existing gulf between adult life and the life of our youth in order that we may better understand how to approach our youth with sane and constructive ideals of high social living. While attempting to do this, let us realize that, perhaps, the most accessible avenue of approach to our youth is that of living and preaching the things that we preach to them.

Respectfully submitted,
MRS. T. J. FLETCHER, Chairman
J. W. JENKINS
B. M. SMITH
Committee

Report adopted.

32. Report on Religious Literature was read by Rev. W. T. Newsome, as follows:

REPORT ON RELIGIOUS LITERATURE

Your committee begs to report as follows:

Solomon, in Prov. 29:18 declared: "Where there is no vision the people perish." The prophet Hosea, declared: "My people are destroyed for lack of knowledge." Hosea 4:6. The Apostle Paul exhorted Timothy to "Study to Show thyself approved unto God, a workman that needeth not to be ashamed rightly dividing the word of truth." II Tim. 2:15.

Southern Baptists are literally perishing (spiritually) all over our Southland and in our own Association and church for lack of vision. The influence and divine power of God's people everywhere is being destroyed for lack of knowledge.

Southern Baptists are not able to do more effective work in winning the lost to Christ because we do not study God's Holy Book enough to rightly divide (handle) the word of truth.

Unlearned, and uninformed Baptists are uninterested Baptists. The appalling need of Southern Baptists today, with reference to religious literature is not more and better literature, but a definite, effective advertising or awakening campaign to enlist our people in reading the abundant supply that we have access to already.

There is perhaps less than 5 per cent of our homes in the Southland—especially our Baptist homes, that do not have a Bible in them. Many of our homes receive a denominational paper of some kind. Lots of them have access thru Sunday Schools, B. T. U., and W. M. U. organizations to an abundance of literature. There are hundreds of tracts sent out free for the asking, by our State Bds. and S. S. Board at Nashville. Our book-stores are filled to capacity with hundreds of the choicest kinds of religious books, at very reasonable prices. Testaments can be purchased for 5 or 10 cents up to the best quality Bible to be had. Our denomination has within its ranks some of the ablest speakers and writers of our day.

Religious literature is in abundance on every hand. The trouble with us, we are not reading it. We are putting what time we have for reading, on other kind of reading matter. The daily paper, a Western story, some continued story in a magazine, the comics, sports, and etc. Most of us know more about the adventures of Orphan Annie than we do about the missionary journeys of Paul.

It is quite probable that the majority of Southern Baptists spend more time reading the comics and sport sections of our Sunday paper on Sundays, than they devote to the study of God's Word plus all other religious literature all seven days of the week.

What can be done about it? Your committee recommends first that each individual begins with self. That we check up on ourself, and see if improvement can not be made in our own time devoted to reading and study. Try to work out a definite program for our daily lives, that will provide more time for the study of God's Word. It is a Lamp unto our feet, and a light unto our path. We grope in darkness because we neglect to use God's lamp and light.

Provide for the systematic reading of some kind of wholesome religious literature, in addition to our state denominational paper.

Secondly, let every Southern Baptist use every opportunity to advertise and boost any good religious book or tract that he may have read. Study the information in your denominational papers and discuss frequently, and freely with others. This will do much to attract their attention to the reading of such books, papers, or tracts. Ask questions freely of the opinion of your associates, on certain important passages of Scripture, or any denominational item of great importance that you may have been reading about yourself. Perhaps you may be able thru your questions, to arrest his attention and send him away to read and study extensively.

Respectfully submitted,
R. E. HATCH, Chairman
A. B. FRANKLIN
A. A. McINNIS

Report adopted.

33. Dr. E. D. Solomon, editor of the Florida Baptist Witness, was with us and spoke to us in regards to our denominational paper. He asked that we put the Baptist Witness in our church budget.

34. E. H. Harrell made a very interesting talk, his subject being "The Ministry of Sacred Music".

35. The hour for the Missionary Sermon having arrived Rev. A. H. Townsend was given the time after singing a hymn. He used scripture found in Luke 19 chapter, 1st Cor. 15 chapter and Mattew 8.

Adjourned for lunch.

FRIDAY AFTERNOON 1:30 P. M.

36. The Association was called to order by the Moderator. After singing a hymn, "Lord Plant My Feet On Higher Ground", Rev. T. J. Ellis led the devotional by reading a portion of God's word found in Ephesians 5th chapter. Rev. H. H. Link led in prayer.

37. Gordan C. Reeves was present with us and gave a short talk on past history of religion in our association and the state.

38. Report on Christian Education read by Mrs. John E. Evans, as follows:

REPORT ON CHRISTIAN EDUCATION

Christian Education does not differ from general education as represented in either state or privately owned schools, except it is to be permeated with Christian ideals and given under Christian influences which, we believe, will produce a more dependable type of morals and a more sympathetic understanding on the part of the pupils thus taught. Christian education has its first expression in the home where parents teach their children and demonstrate through their lives the high ideals of Christianity.

Next, in the order comes the Sunday School, in which consecrated Christian men and women teach the word of God to their pupils, and seek to apply these teachings to the everyday lives of their pupils. Hence, the Sunday School has become known as a great evangelistic agency. Our association has a stewardship unto every person living in the bounds of our territory who is not now enrolled in any Sunday School, and we will be unfaithful to our trust in proportion that we are indifferent to their enlistment as well as in their being taught.

The third step in Christian education has to do with academic training. Academies, colleges, and universities were born of Christian impulse, nurtured in communities where such institutions are needed. They are opened to people of every faith and no faith, but in their classwork and in the spirit of the schools, they seek to magnify the fundamental ideals of Christianity. Florida Baptists are happy in the work of Stetson University. This school is growing rapidly, and more and more is approaching the Baptist ideals of right living.

The last step is that of theological education in which all of our preachers and many laymen who aspire to positions of leadership in the denominational life, and many women who are called upon to engage in large scale activities for the denomination should be trained. There are three places where this type of work is done for Southern Baptists: the Southern Seminary and W. M. U. Training School, both of Louisville, Kentucky, are the oldest institutions doing this type of work. The Southwestern Seminary, Seminary Hill, Texas, and the Baptist Bible Institute of New Orleans, Louisiana, each carry a full theological course for preachers, a department of gospel music for singers, and a full course of instruction for young women. Thus, Southern Baptists maintain three full fledged theological seminaries for their preachers, three schools of music for those who desire gospel music and three full courses of training for women who desire special training for Christian service. It is imperative for us to urge each of our leaders to attend one of these schools rather than some interdenominational or non-sectarian school.

Respectfully submitted,

MRS. JOHN E. EVANS, Chairman
MRS. J. H. GOFF
MRS. F. D. PHILLIPS

Report adopted.

Committee

39. Report on Ministerial Relief and Annuity was read by Rev. W. H. Gray, as follows:

REPORT ON MINISTERIAL RELIEF AND ANNUITY

The Relief and Annuity Board of the Southern Baptist Convention has just completed its twenty-first year of service. It has paid in benefits during these twenty-one years \$3,560,690.21. The Relief benefits during the past year totaled \$90,776.28, and Annuity benefits, \$233,748.38.

Our people should give to the work of this Board earnest prayer and liberal contributions.

FELLOWSHIP OFFERINGS FOR RELIEF

In addition to the regular Cooperative Program gifts, which are by no means sufficient for the work of this Board, every church within the bounds of the Southern Baptist Convention should respond to the appeal of the Board for at least one Fellowship Offering to be taken at the Lord's Supper during each year. Such action on the part of our churches would make it possible for this Board to provide benefits for aged ministers and widows that would really meet their necessities. At present we are not meeting their necessities—we are only helping a little. How simple a matter it would be for our churches to do this, and we believe they will do it if our ministers will request it. Surely no minister will feel embarrassed in making this proposal to his church, for it will not be for himself but for others.

THE CONVENTION MINISTERS RETIREMENT PLAN

The Convention Ministers Retirement Plan, which is already in operation in South Carolina and Texas, is expected to go into operation during the present year in at least six other states, and before the beginning of the new year in several more.

This plan is the flowering forth of all previous plans and promises to bring adequate support for all active ministers of the Southern Baptist Convention. Unfortunately those who have already retired cannot participate in this plan—they must be aided from the Relief Department, but there is no reason why in the years to come there should be a single needy preacher in his old age in the Southern Baptist Convention. Surely our churches, who have been exempt from taxation by the Government and have been left free to carry on their work without interference from the Government, will feel that they should do voluntarily for their ministers what the Government requires business organizations to do by law.

This new plan is making great progress, and it has behind it the State Conventions, the State Boards and the officials of the Conventions and the Boards, and this time the preachers themselves, for the funds they ask their churches to pay toward this plan are not for themselves as individuals, but for a great group of preachers who participate in the plan. It is a plan that offers a real solution of the problem of Ministerial Relief and is destined to be accepted by every State Convention, and we trust, by every church and minister in the Southern Baptist Convention.

Information concerning the work of the Relief and Annuity Board can be had by addressing your own State Secretary or Thomas J. Watts, Executive Secretary, 2002 Tower Petroleum Building, Dallas, Texas.

Respectfully submitted,

W. H. GRAY, Chairman
J. M. KITE

40. Report spoken on by Rev. W. H. Evans, Dr. E. D. Solomon, Rev. H. H. Link.

Report adopted.

41. Motion made and carried that our Constitution and By-Laws be amended—Section 3, paragraph 4; also Section 4, Paragraph 3. See Resolutions.

42. Report on Evangelism read by Dr. John E. Evans, as follows:

REPORT ON EVANGELISM

Since Jesus came into the world to seek and to save the lost, the great mission of the churches is to follow his teachings and his example.

All southern Baptists rejoice at the renewed emphasis being placed on Evangelism. The year behind us has been the greatest year of soul-winning that our zion has ever seen. Now our hearts rejoice at the sound of a great going forth in the top of the mulberry trees.

In our association thirty-two revivals have been held this year. Meetings in all churches except Divonia and New Prospect report 219 baptisms. This is an increase of 175 over last year.

The work of Bro. W. H. Gray, who was engaged by the Executive committee to work among the weak churches was a fine bit of Evangelistic building. Our thanks should go to Bro. Kierce and Bro. Newsome for financing this undertaking.

Bro. Gray gave ten weeks to the following churches, Belleville, Dowling Park, Friendship, Rose Mary and Mt. Gilead. Twenty-six converts were baptized in these revivals and four Sunday schools organized. These churches have taken a new life with regular services being held in each of them.

It is the hope of your committee that through prayer and personal testimony, mass evangelism and associational efforts this new year shall be even greater than the one just closed.

Respectfully submitted,

JOHN E. EVANS, Chairman
H. O. HUGHES
W. H. GRAY

Report adopted.

43. Report on Obituaries read by E. T. Horne, as follows:

REPORT ON OBITUARIES

We your Committee on obituaries wish to submit the following report.

During the year just closed we find that 23 of our fellow workers have answered the call of their Master and have passed to their reward. It is with sad hearts, that we record the passing of these loved ones. But we bow in humble submission to the will of our blessed Savior for we know that he doeth all things well. Therefore we recommend that a page of our Associational Minutes be dedicated to their memory.

Respectfully submitted,

E. T. HORNE, Chairman
G. R. CARVER
F. W. BRENNAN

Committee

Report adopted.

44. Report of Treasurer read by R. E. Hatch, as follows:

TREASURER'S REPORT

SUWANNEE BAPTIST ASSOCIATION

Your Treasurer begs to make the following report.

RECEIPTS

Received from Finance Committee as reported	\$115.62
Received from Finance Committee not reported	6.50
Received from Special offering	14.10
Received for Pastors Conference	104.13
Received for Children's Home (Supplies)	623.69

TOTAL RECEIPTS \$864.04

DISBURSEMENTS

October 14th, 1938—Paid Clerk Balance on Postage	\$ 1.51
October 14th, 1938—Paid Clerk Salary	25.00
November 19th, 1938—Suwannee Democrat, Printing Minutes	95.00
February 1939—Pastors Conference	104.13
February 1939—Supplies Shipped Children's Home	623.69
October 12th, 1939—G. L. Dorman, Postage80

TOTAL DISBURSEMENTS \$850.13

Balance on Hand \$ 13.91

Respectfully,

R. E. HATCH, Treas.

Report adopted.

45. Report of Finance Committee read by R. E. Hatch, as follows:

REPORT OF FINANCE COMMITTEE

We, your committee, beg to report that we have collected from the various churches of the Association the following amount: \$117.90, and same has been turned over to R. E. Hatch, Treasurer.

Respectfully submitted,

R. E. HATCH, Chairman
D. J. MILLS
S. C. KIERCE

Report adopted.

46. Report on Digest of Letters read by H. J. Horne, as follows:

REPORT ON STATE OF RELIGION AND DIGEST OF LETTERS

Churches reported 1939 session 30; membership 3730.
Additions during the year 179; baptisms 291.
Sunday Schools reported 23; enrollment 1700.
B. T. U.'s reported 25; enrollment 433.
Brotherhood reported 1; enrollment 73.
Number Revival Meetings 32.
Number Families taking State Paper 61.
Number tithers 87.
W. M. U. organizations reporting 21; enrollment 461; Gifts \$1,629.07.
Pastor's salary \$6,829.83; Mission Gifts \$3,424.48.
Co-Operative Gifts \$1,579.18. Local church expenses \$13,043.69.
Grand total \$26,506.25. Church Property \$79,290.00.

Respectfully submitted,

H. J. Horne, Chairman
REV. A. M. PARKER
REV. A. H. TOWNSEND

Report adopted.

47. Report on Nominations read by Dr. John E. Evans, as follows:

REPORT ON NOMINATION

We recommend that the Association hold its 1940 session with the Live Oak Baptist Church; the time as fixed by the constitution and By-laws; Thursday and Friday following the second Sunday in October.

Preacher for Introductory Sermon H. H. Link; Alternate A. B. Franklin.
Preacher for Missionary Sermon W. T. Newsome; Alternate T. J. Ellis.

Associational messengers to the Florida Baptist Convention, A. M. Parker, A. H. Townsend and W. H. Gray.

Respectfully submitted,
JOHN E. EVANS, Chairman
A. W. ROSS
H. O. HUGHES

Report adopted.

48. Report on Resolutions read by Rev. H. O. Hughes, as follows:

RESOLUTION

The Executive Committee of this Association shall be composed of:

1. One member from each church elected by the church and reported to the association in the regular church letter each year; provided, that for the ensuing year (1940) each church shall at its regular service after this meeting of the association, elect one of its members to serve on the Executive Committee and shall report the name and address of this elected member to the Moderator and Clerk of the association.

2. The pastor of each and every church in the association.

3. The presiding officer of each associational organization.

The Executive Committee shall meet on the Second Tuesday p. m. of each of the months of December, March, June, and September at a place that may be decided by the committee itself.

The officers of the Executive Committee, together with the presiding officers of the associational organizations, shall constitute a Steering Committee that shall have the power to transact any business of the association that may be necessary during the time between the regular meetings of the Executive Committee; providing, that in the event the association is not organized as indicated above, then the Steering Committee shall be composed of the officers of the Executive Committee and four other such members of the Executive Committee as shall be elected by the Executive Committee.

The Steering Committee shall meet once each month or as often as the Chairman may call it into session.

H. O. HUGHES

Report adopted.

49. Report on Resolutions read by H. O. Hughes, as follows:

RESOLUTION

Amendments to Constitution and By-laws.

A motion to the effect that—The words "Florida Convention of Baptist Churches" be stricken from our Constitution and By-laws; and that the words "Florida Baptist Convention" be inserted instead; this to conform to the Constitution and By-laws of our State Convention.

A motion to the effect that—In section 4, of our By-laws, that the following line be stricken out, namely—"to name the Associational Member to the State Board of Missions of the Florida Convention of Baptist Churches"; this to conform to an amendment to the State Convention Constitution and By-laws, which provides for the election of its Board Members by the State Convention.

Also the following paragraph—"To name the Executive Committee" be stricken out.

H. O. HUGHES

Report adopted.

50. Motion made by Dr. John E. Evans and carried that Clerk be paid \$25.00 for his services.

51. Committee chairmen were appointed for next year. See list in Associational Directory.

52. Adjourned to meet with Live Oak Baptist Church 10:00 o'clock A. M. Thursday, October 17th, 1940.

REV. W. T. NEWSOME, Moderator
G. L. DORMAN, Clerk

ANNUAL REPORT OF WOMANS' MISSIONARY UNION OF SUWANNEE ASSOCIATION, 1938-39

The W. M. U. of the Suwannee Association met on Thursday, Oct. 5, 1939 in their Annual Session with Mt. Gilead Church, Falmouth, Florida.

The meeting was opened by singing "Jesus Calls Us" after which Mrs. Geo. Allen of Live Oak led the devotional, from Daniel 6:10, her topic being "Windows of the Soul."

The theme of the beautiful program which was suggested by Miss Theo Thomas, W. M. U. field worker, was carried through the entire meeting. Mrs. C. E. Lawrence gave a cordial welcome, "Opening the Windows to Greet Friends," which was responded to by Mrs. W. T. Newsome.

The following committees were appointed by the President:

Time and Place—Miss Mamie Griffis, Mrs. W. H. Tuten, Mrs. W. T. Newsome.
Obituaries—Mrs. J. E. Evans, Mrs. T. J. Fletcher, Mrs. F. H. Cason.
Resolutions—Mrs. Frank Bamberg Jr., Mrs. Wallace Bates, Mrs. B. G. Bell.
Enrollment—Mrs. J. W. Faulkner, Miss Iris Bland.
Nominating—Mrs. W. B. Lewis, Mrs. Phil Goff, Mrs. Robert Tuten.

The following visitors were recognized, Mrs. Harold Link of Branford, Mrs. C. M. Hill, Jasper, Mrs. M. H. Bagley from the Middle Florida Association. Mrs. Walden, State W. M. U. president and Mrs. J. B. Boatwright, former W. M. U. president of South Carolina. Mrs. Boatwright has had a wide experience in Missionary work and accompanied Dr. Maddry and his party on their recent trip through the Mission Fields of Africa. Her address was most interesting and inspiring.

The report of the Sec. and Treas., Mrs. Kirby Sandlin, was very encouraging, showing an increase in every phase of the W. M. U. work except awards in Mission Study. More interest shown in Missions and societies reporting regularly every quarter. It was read as follows:

No. societies in Association: 11.
No. W. M. U. members: 297 (increase of 15 over last year).
No. covenant signing tithers: 43 (increase of 18 over last year).
No. Mission Study courses: 15 (increase of 5 over last year).
No. awards: 89.

No. subscribers to Royal Service: 74 (increase of 29 over last year).
 No. subscribers to other periodicals: 20.
 No. subscribers to Baptist Witness: 55 (increase of 7 over last year).
 No. engaged in directed personal service: 183 (increase of 106).
 Coupons for Children's Home: 1300 (increase of 335).
 Value of boxes to Children's Home: \$58.09 (increase of \$11.16).
 Contributes to Co-operative program: \$478.07 (increase of \$174.10).
 Hundred Thousand Club: \$150.00 (increase of \$8.10).
 Home Missions: \$78.60 (increase of \$57.37).
 State Missions: \$18.20 (increase of \$6.80).
 Foreign Missions: \$36.93 (increase of \$19.11).
 Local Work: \$439.14 (increase of \$119.28).
 Local charity: \$44.40 (no report last year).
 Other objects: \$164.75 (increase of \$52.90).
 Florida Margaret Fund Students: \$4.00.
 White Cross: \$297.00 (increase of \$21.03).
 Total for all purposes: \$1,491.00 (increase of \$537.89).
 The treasurer's report was read, and showed \$2.26 on hand.

The president's address was an appeal to those present to "Unlock the Windows" of their minds and hearts that the sunshine of God's love might shine in and cause them to carry out the Great Commission the Savior left us, to be charitable to the needy all around us and to refrain from robbing God of tithes and offerings.

A most interesting address was then given by Mrs. Boatwright on "Opening the Windows Wider". She made a strong appeal for the work in Africa.

The hymn "Work for the Night Is Coming" was sung and we were dismissed for lunch.

Lunch.

The afternoon session began promptly at one o'clock by singing, "I Love To Tell The Story". This was followed by a beautiful meditation and prayer by Mrs. J. E. Evans.

Mrs. Walden then addressed the body on "He Who Builds Windows." This was followed by a discussion of methods. Mrs. Boatwright gave the report of the Baptist World Alliance.

The reports of the District Superintendents showed two new societies organized in Suwannee County and one society for colored women at Jasper. Splendid reports were read from all committee chairmen.

The treasurer reported that the W. M. U. had paid their pledge to "House Beautiful" and \$6.40 over their quota.

Report of Committees:

Time and Place—Jennings selected to entertain in March Rally, and O'Brien extended an invitation for the annual meeting in 1940.

The enrollment committee reported nine societies represented and one hundred ladies present.

The Memorial committee reported the following deaths: Mrs. M. J. Henderson and Mrs. M. J. Mills of Live Oak; Miss Bertie Herring, New Hope Church; Miss Octavia Tuten, Jasper.

Resolution Committee expressed gratitude and thanks to the retiring officers, the visitors and to the Mt. Gilead church for their cordial hospitality.

The Nominating Committee submitted names of the following officers for 1940 which were accepted by the Association:

President	Mrs. C. E. Lawrence, Falmouth
Vice-President	Mrs. Frank Bamberg, Jasper
Sec. and Treas.	Mrs. W. T. Newsome, Live Oak
Supt. Hamilton Co.	Mrs. J. H. Corbett, Jasper
Supt. Suwannee Co.	Mrs. Alex Goff, Live Oak
Young People's Director	Mrs. M. H. Bagley, Jasper
Personal service chairman	Mrs. Malcolm Tompkins, Jennings
Hundred Thousand Club chairman	Mrs. B. G. Bell, Falmouth
Margaret Fund chairman	Mrs. Robert Tuten, Jennings
Training School chairman	Mrs. J. T. Blanchard, Live Oak
Stewardship chairman	Mrs. T. T. Fletcher, O'Brien
Publicity chairman	Mrs. J. A. Scaff, Jasper, Rt. 3
White Cross chairman	Mrs. Geo. R. Carver, Branford
Mission Study chairman	Mrs. G. C. Bryant, Live Oak
Members Children Home Aux.	Mrs. A. W. Ross
Members at large	Mrs. H. H. Link, Branford
	Mrs. D. J. Mills, Live Oak

An offering of \$6.64 was made, which gave a balance of \$8.96 in treasury.

The Consecration service led by Mrs. W. B. Lewis was beautiful and very impressive which closed the program for the day.

Respectfully submitted,
 MRS. J. L. McDANIEL
 MRS. R. E. HATCH

MEMORIAL PAGE

This page is dedicated to the memory of our comrades who have answered the last roll call since October 1st, 1938.

ANTIOCH:

Mr. H. G. Helton, Sr.

BEULAH:

Mr. J. E. Barrington

BRANFORD:

Mrs. T. I. Webb

BRIGHT POND:

Mrs. Pauline Oxendine
Mrs. Tom Royals
Mrs. Sara Sterling

DIVONIA:

Mr. Iron Duncan
Mr. J. B. Ellis

JASPER:

Miss Octavia Tuten
Deacon D. L. Vickers, Sr.

LIVE OAK:

Mrs. M. J. Mills

MT. OLIVE

Mr. W. E. Privett

MT. PISGAH:

Mr. W. E. Carver
Mrs. A. T. Cornette
Mrs. L. L. Crews

NEW HOPE:

Miss Birdie Herring
Mr. John L. Scoff

O'BRIEN

Mr. J. A. Baker
Mrs. Rose McInnis

ORANGE:

Mrs. T. P. Parker

PINE LEVEL:

Mr. Geo. W. Stewart

ROSE MARY:

Mr. Samuel Jenkins

SHADY GROVE:

Deacon C. A. Bray
Mrs. C. A. Bray

CHURCH DIRECTORY

ORDAINED MINISTERS HOLDING MEMBERSHIP IN THE CHURCHES OF THE SUWANNEE BAPTIST ASSOCIATION

Name and Address	Church of Which Member	Ministerial Work
Ellis, T. J., Live Oak, Fla.	Mt. Olive	Pastor
Evans, A. K., Live Oak, Fla.	Antioch	Inactive
Evans, John E., Live Oak, Fla.	Live Oak	Pastor
Floyd, E. O., Live Oak, Fla.	Clayland	Inactive
Franklin, A. B., Live Oak, Fla.	Pleasant Hill	Pastor
Gray, W. H., Live Oak, Fla.	Beulah	Pastor
Griffin, Jr., C. A., Falmouth, Fla.	Mt. Gilead	Stu.-Minister
Henry, R. W., Dowling Park, Fla.	Beulah	Pastor
Holcomb, E. H., Live Oak, Fla.	Suwannee	Pastor
Holmes, W. H., O'Brien, Fla.	Union	Inactive
Hughes, H. O., Jasper, Fla.	Jasper	Pastor
Lowe, Dewey, Live Oak, Fla.	Suwannee	Inactive
McInnis, W. D., O'Brien, Fla.	O'Brien	Inactive
Newsome, W. T., Live Oak, Fla.	Live Oak	Pastor
Parker, J. S., Live Oak, Fla.	Rocky Sink	Inactive
Platt, G. H., Live Oak, Fla.	Orange	Pastor
Platt, J. J., Live Oak, Fla.	Clayland	Inactive
Taylor, W. C., Jennings, Fla.	Jennings	Pastor
Ward, S. G., Live Oak, Fla.	Pine Level	Pastor
Wheeler, D. M., Jasper, Fla.	Divonia	Pastor
Wise, E. R., Live Oak, Fla.	Antioch	Inactive

WE HAVE NO ASSISTANT PASTORS OR EDUCATIONAL DIRECTORS WITHIN THE BOUNDS OF THE SUWANNEE BAPTIST ASSOCIATION.

WE HAVE NO MINISTERS ORDAINED THIS YEAR.
AUXILIARIES

B. T. U. OFFICERS AND THEIR POST OFFICE ADDRESSES

Church	Work and Officer	Address
Branford	Director, Betty Welburn	Branford, Fla.
Bright Pond	President, Mrs. Eliza Smith	Jasper, Fla.
Jasper	Director, H. C. Lunsford	Jasper, Fla.
Jennings	Director, M. E. Tompkins	Jennings, Fla.
Live Oak	Director, J. L. McMullen	Live Oak, Fla.
New Hope	Director, Jack McGhin	Jasper, Fla.
Philadelphia	Director, Mrs. J. J. Robins	Live Oak, Fla.
Pleasant Hill	Director, Wilmer H. Goff	Pine Mount, Fla.
Rocky Sink	President, Gus Brown	Live Oak, Fla.
Tiger Lake	President, Fred McLeod	Live Oak, Fla.
Tiger Lake	Story Hour, Mrs. E. T. Horne	Live Oak, Fla.

LAYMAN'S BROTHERHOOD DIRECTORS

Church	Name	Address
Live Oak	J. L. McMullen	Live Oak, Fla.
Note: No others reporting.		

WOMAN'S MISSIONARY SOCIETY PRESIDENTS

Church	Name	Address
Branford	Mrs. B. B. Newburn	Branford, Fla.
Clayland	Lula McLeod	Live Oak, Fla.
Jasper	Mrs. Frank Bamberg Jr.	Jasper, Fla.
Jennings	Mrs. J. L. McDaniel	Jennings, Fla.
Live Oak	Mrs. A. P. Goff	Live Oak, Fla.
Mt. Gilead	Mrs. C. E. Lawrence	Falmouth, Fla.
New Hope	Mrs. Annie Ruth Tyre	Jasper, Fla.
O'Brien	Mrs. T. J. Fletcher	O'Brien, Fla.
Philadelphia	Mrs. A. W. Ross	Live Oak, Fla.

Note: No others reporting.

CHOIR DIRECTORS OR LEADERS

Church	Name	Address
Branford	Mrs. F. D. Phillips	Branford, Fla.
Clayland	Mrs. J. G. Brim	Live Oak, Fla.
Jasper	Mrs. L. B. Register	Jasper, Fla.
Jasper	Mrs. M. W. Wetherington	Jasper, Fla.
Jennings	R. M. Bush	Jennings, Fla.
Live Oak	Miss Emily Blackwell	Live Oak, Fla.
Mt. Olive	T. A. Knight	Wellborn, Fla.
Mt. Pisgah	H. T. Howell	O'Brien, Fla.
New Hope	Jim Dees	Jasper, Fla.
O'Brien	Mrs. Mary Miller	O'Brien, Fla.
Orange	J. H. Brown	Live Oak, Fla.
Pine Level	Lula Baxter	Live Oak, Fla.
Shady Grove	Fred Bray	Live Oak, Fla.

Note: No others reporting.

TABLE NUMBER ONE CHURCH MEMBERSHIP, ETC., SUWANNEE BAPTIST ASSOCIATION, YEAR ENDING SEPTEMBER 30, 1939

CHURCHES	Is It in a Town, City or Village, Country?	When Constituted	PASTORS AND POST OFFICES	Days of Meetings	CHURCH MEMBERSHIP						Members Reported Last Year	LOSSES				Total Members	Weekly Prayer Meetings	Revival Meetings Held During Year	Observances of Lords Supper During Year	Families Receiving State Baptist Paper
					GAINS			LOSSES				Total								
					Baptisms	Letters	Statements	Restorations	Letters	Exclusions			Errasures	Deaths						
1 Antioch	Country	1851	C. L. Clemons, Lake City, Fla.	1st	4	1	2	2	1	53	No	1	1	1	1	1	1	1	1	
2 Belleville	"	1848	W. H. Gray, Live Oak, Fla.	4th	2	2	2	2	2	23	Yes	2	2	2	2	2	2	2	2	
3 Bethel	Village	1929	"	3rd	102	27	2	1	1	125	Yes	1	1	1	1	1	1	1	1	
4 Branford	Town	1886	H. Link, Branford, Fla.	1st & 3rd	179	33	40	1	1	242	Yes	3	3	3	3	3	3	3	3	
5 Bright Pond	Country	1890	W. H. Gray, Live Oak, Fla.	4th	147	4	4	1	1	147	No	1	1	1	1	1	1	1	1	
6 Clayland	"	1873	T. J. Ellis, Live Oak, Fla.	4th	147	30	10	2	2	179	No	1	1	1	1	1	1	1	1	
7 Corinth	"	1894	John Collins, Cherry Lake, Fla.	4th	96	2	2	2	2	91	Yes	1	1	1	1	1	1	1	1	
8 Divonia	"	1921	D. M. Wheeler, Jasper, Fla.	2nd	25	5	5	3	3	25	No	2	2	2	2	2	2	2	2	
9 Friendship	Hamilton	1872	T. J. Ellis, Live Oak, Fla.	2nd	55	8	8	5	5	55	No	2	2	2	2	2	2	2	2	
10 Friendship	Suwannee	1882	H. O. Hughes, Jasper, Fla.	2nd	287	1	6	9	9	283	Yes	1	1	1	1	1	1	1	1	
11 Jasper	Village	1897	W. T. Newsome, Live Oak, Fla.	Full Time	487	7	4	14	14	482	Yes	3	3	3	3	3	3	3	3	
12 Live Oak	City	1868	John E. Evans, Live Oak, Fla.	Full Time	120	1	1	1	1	122	Yes	1	1	1	1	1	1	1	1	
13 Mary Belle	Country	1878	S. F. Young, Lake City, Fla.	4th	142	2	4	1	1	145	No	1	1	1	1	1	1	1	1	
14 Mount Gilead	"	1892	A. H. Townsend, Perry, Fla.	3rd	104	14	5	1	1	117	No	1	1	1	1	1	1	1	1	
15 Mount Olive	"	1878	R. W. Henry, Live Oak, Fla.	3rd	159	3	4	5	5	164	No	1	1	1	1	1	1	1	1	
16 N-w Hope	"	"	A. M. Parker, Mayo, Fla.	3rd	20	20	8	4	4	20	Yes	1	1	1	1	1	1	1	1	
17 New Prospect	"	1892	A. H. Townsend, Perry, Fla.	2nd & 4th	188	25	8	2	2	215	Yes	1	1	1	1	1	1	1	1	
18 O'Brien	Village	1899	W. H. Gray, Live Oak, Fla.	2nd	149	24	12	2	2	179	No	1	1	1	1	1	1	1	1	
19 Orange	Country	1876	H. H. Link, Branford, Fla.	2nd	265	37	6	2	2	306	No	1	1	1	1	1	1	1	1	
20 Philadelphia	"	1926	T. J. Ellis, Live Oak, Fla.	1st	41	5	4	3	3	38	Yes	1	1	1	1	1	1	1	1	
21 Pine Level	"	1928	R. W. Henry, Live Oak, Fla.	1st	100	11	2	3	3	102	No	1	1	1	1	1	1	1	1	
22 Pine Mount	Country	1884	R. W. Henry, Live Oak, Fla.	2nd	78	8	3	1	1	89	No	1	1	1	1	1	1	1	1	
23 Pleasant Hill	"	1872	W. T. Newsome, Live Oak, Fla.	4th	27	1	1	1	1	27	No	1	1	1	1	1	1	1	1	
24 Rocky Sink	"	1899	R. W. Henry, Live Oak, Fla.	4th	92	2	1	1	1	92	No	1	1	1	1	1	1	1	1	
25 Rose Mary	"	1933	E. H. Holcomb, Live Oak, Fla.	3rd	56	1	1	1	1	56	Yes	1	1	1	1	1	1	1	1	
26 Shady Grove	"	1877	E. H. Holcomb, Live Oak, Fla.	1st	77	1	3	1	1	78	Yes	1	1	1	1	1	1	1	1	
27 Swannee	Village	1883	A. M. Parker, Mayo, Fla.	1st	23	23	1	3	3	22	Yes	1	1	1	1	1	1	1	1	
28 Tiger Lake	Country	1891	A. B. Franklin, Live Oak, Fla.	1st	3,483	291	136	11	11	3,776	No	1	1	1	1	1	1	1	1	
29 Union	"	"	"	"	"	"	"	"	"	"	"	"	"	"	"	"	"	"	"	
30																				
31																				
32																				
					TOTALS						7,104	14	11	23	3,776	32	37	61	61	

*Note: No report. Statistics taken from latest records.
 G. L. DORMAN, Clerk of Suwannee Baptist Association, Live Oak, Florida.
 REV. W. T. NEWSOME, Moderator of Suwannee Baptist Association, Live Oak, Florida.
 NEXT ANNUAL MEETING: October 17th and 18th, 1940. Place, Live Oak, Florida.

TABLE NUMBER TWO

SUNDAY SCHOOLS OF SUWANNEE BAPTIST ASSOCIATION, YEAR ENDING SEPTEMBER 30, 1939

CHURCHES	SUPERINTENDENTS AND POST OFFICES	Sunday School Enrollment							Special Information				Vocation Bible School						
		Cradle Roll, Under 3 Years	Beginners, 3-5 Years	Primaries, 6-8 Years	Juniors, 9-12 Years	Intermediates, 13-16 Years	Young People, 17-24 Years	Adults, 25 Years and up	General and Departmental Officers	Total Enrollment—Including All Officers, Teachers and Pupils	Average Attendance?	Baptisms from Sunday School		Is the School Graded?	Is It Standard A-1?	Teachers Holding Diplomas	Enrollment	Average Attendance	
1 Antioch	No Sunday School																		
2 Belleville	Geo. H. Perry, Lake Park, Ga.																		
3 Bethel	Eurl Sheppard, Dowling Park, Fla.																		
4 Beulah	Olen Dryden, Live Oak, Fla.																		
5 Branford	R. E. Hatch, Branford, Fla.																		
6 Bright Pond	C. Jenkins, Jasper, Fla.																		
7 Clayland	J. G. Brim, Live Oak, Fla.																		
8 Corinth	No Sunday School																		
9 Divonia	Mrs. D. M. Wheeler, Jasper, Fla.																		
10 Friendship, Hamilton																			
11 Friendship, Suwannee	C. S. McDaniel, Live Oak, Fla.																		
12 Jasper	Harry T. Perry, Jasper, Fla.																		
13 Jennings	Geo. H. Perry, Jennings, Fla.																		
14 Live Oak	S. C. Kierce, Live Oak, Fla.																		
15 Mary Belle	S. L. Mixon, Live Oak, Fla.																		
16 Mount Gilend	C. A. Griffin, Falmouth, Fla.																		
17 Mount Olive	W. M. Hogan, Live Oak, Fla.																		
18 Mount Pisgah	H. T. Howell, O'Brien, Fla.																		
19 New Hope	Eugene Zittrower, Jasper, Fla.																		
20 New Prospect																			
21 O'Brien	J. T. McCaghen, O'Brien, Fla.																		
22 Orange	A. C. Landen, Live Oak, Fla.																		
23 Philadelphia	A. C. Howell, Fincemount, Fla.																		
24 Pine Level	L. C. Newman, Live Oak, Fla.																		
25 Pine Mount	No Sunday School																		
26 Pleasant Hill	No Sunday School																		
27 Rocky Sink	W. C. Clemmons, Live Oak, Fla.																		
28 Rose Mary	J. W. Tippet, Live Oak, Fla.																		
29 Shady Grove	Proctor Phillips, Live Oak, Fla.																		
30 Suwannee	J. M. Robinson, Live Oak, Fla.																		
31 Tiger Lake	No Sunday School																		
32 Union																			
TOTALS		14	177	206	350	337	168	337	89	1,728	921	114	32	65	35				

*Churches not reporting at this session of the Association.

Columns in statistical table where no entries have been made are omitted in above table.

G. L. DORMAN, Clerk of Suwannee Baptist Association, Live Oak, Florida.

REV. W. T. NEWSOME, Moderator of Suwannee Baptist Association, Live Oak, Florida.

TABLE NUMBER THREE
BAPTIST TRAINING UNION & MEN'S BROTHERHOODS OF SUWANNEE BAPTIST ASSOCIATION, YEAR ENDING SEPTEMBER 30, 1939

CHURCHES	BAPTIST TRAINING UNION (B.Y.P.U.'s and B.A.U.'s)											Men's Brotherhoods									
	Baptist Training Union with Director	Number of B.A.U.'s	Number of Senior B.Y.P.U.'s	Number of Intermediate B.Y.P.U.'s	Number of Junior B.Y.P.U.'s	Total B.A.U.'s and B.Y.P.U.'s	Adults Enrolled	Intermediates Enrolled	Juniors Enrolled	Total Enrolled	Total Number Daily Bible Readers	Number Taking Study Course	Total Systematic Givers in All Unions	Has Training Union Been A-1 for One Quarter?	Number of B.Y.P.U.'s and B.A.U.'s A-1 for One Quarter	Students in College from Your Church	Number Brotherhoods	Enrollment Brotherhoods			
1 Branford	No		1	1	1	3	18	20	12	50	18	25	24	No	1						
2 Bright Pond	Yes		1	1	1	3	16	11	10	16	11	10	14	Yes	1						
3 Jasper	Yes		1	1	1	3	12	12	8	24	24	10	20	No							
4 Live Oak	Yes		1	1	1	3	18	30	30	78	16	10	20	No							
5 Mount Olive	Yes		1	1	1	3	13	8	8	21	12	12	21	Yes	2						
6 New Hope	Yes		1	1	1	3	42	20	20	62	26	20	43	No							
7 O'Brien	No		1	1	1	3	10	10	10	20	20	20									
8 Orange	No		1	1	1	3	27	15	15	72	35	35									
9 Philadelphia	Yes	1	1	1	1	4	15	27	14	9	9	11	11								
10 Pleasant Hill	Yes		1	1	1	3	20	8	7	35	17	14	27	No							
11 Rocky Sink	Yes		1	1	1	3	14	14	14	14	11	11	14	Yes	3						
12 Tiger Lake	No		1	1	1	3	25	217	99	102	438	143	174		3						
TOTALS		1	11	6	7	25	15	217	99	102	438	143	174		3					1	78

Note: Churches whose names do not appear have not reported any Organization.

Note: Columns where no entries have been made are omitted in above table.

G. L. DORMAN, Clerk of Suwannee Baptist Association, Live Oak, Florida.

REV. W. T. NEWSOME, Moderator of Suwannee Baptist Association, Live Oak, Florida.

TABLE NUMBER FOUR
W. M. U. ORGANIZATIONS AND GIFTS OF SUWANNEE BAPTIST ASSOCIATION,
YEAR ENDING SEPTEMBER 30, 1939

CHURCHES	W. M. U. WORK										Grand Total for All Purposes Given by the W. M. U. and All Its Organizations				
	Number of Women's Missionary Societies	Number of Y. W. A.'s	Number of G. A.'s	Number of R. A.'s	Number of Sunbeams	Total W. M. U. Organizations	W. M. S. Members	Y. W. A.'s Members	G. A.'s Members	R. A.'s Members		Sunbeam Members	Total Members Enrolled	Mission Study Courses	Contributions (Local Work) Given by W. M. U.
1 Branford	1	1	1	1	1	1	20	16	16	16	32	20	13	\$ 10.50	\$ 21.50
2 Clayland	1	1	1	1	1	5	78	9	6	16	13	117	59	13.50	16.24
3 Jasper	1	1	1	1	1	1	12	12	12	12	12	12	6	182.43	403.71
4 Jennings	1	1	2	1	1	6	118	15	41	17	31	222	147	57.55	69.39
5 Live Oak	1	1	1	1	1	3	17	7	7	6	30	20	21	218.72	449.09
6 Mount Gilead	1	1	1	1	1	1	13	1	1	1	1	1	1	21.00	46.88
7 New Hope	1	1	1	1	1	1	19	1	1	1	1	1	1	22.00	12.00
8 O'Brien	1	1	1	1	1	1	13	1	1	1	1	1	1	66.71	28.50
9 Philadelphia	9	2	5	2	8	21	301	24	70	33	50	478	245	\$52.41	\$1,095.16
															\$1,647.57

Note: Churches whose names do not appear have not reported any Organization.
 G. L. DORMAN, Clerk of Suwannee Baptist Association, Live Oak, Florida.
 REV. W. T. NEWSOME, Moderator of Suwannee Baptist Association, Live Oak, Florida.

TABLE NUMBER FIVE
CHURCH PROPERTY OF SUWANNEE BAPTIST ASSOCIATION, YEAR ENDING SEPTEMBER 30, 1939

CHURCHES	CHURCH CLERKS AND POST OFFICES										Total Value All Church Property	Value of Pastor's Home	Indebtedness on All Church Property	Insurance Carried
	Does Your Church Own Its House of Worship?	When Was It Built?	Materials Used	Persons Seated	Number of Rooms	Dept. Assembly Rooms	No. Separate Class Rooms	Value of Church House and Grounds	Total Value All Church Property	Value of Pastor's Home				
1 Antioch	Yes	1906	Wood	200	1	1	\$ 1,200	\$ 1,200	\$	\$				
2 Belleville	Yes	1906	Wood	200	1	1	500	500						
3 Bethel	No	1902	Wood	150	1	1	75	75	25					
4 Beulah	Yes	1928	Brick	350	9	1	10,000	12,000						
5 Branford	Yes	1928	Wood	300	1	1	1,500	1,500	2,000					
6 Bright Pond	Yes	1884	Wood	200	1	1	1,000	1,000						
7 Clayland	Yes	1884	Wood	300	1	1	500	500						
8 Corinth	No	1883	Wood	200	1	1	200	200						
9 Divonia	Yes	1882	Wood	100	1	1	150	150						
10 Friendship, Hamilton	Yes	1907	Brick	500	2	2	20,000	20,000						
11 Friendship, Suwannee	Yes	1897	Wood	250	6	1	1,500	1,500						
12 Jasper	Yes	1904	Brick	400	15	6	17,500	3,750						
13 Jennings	Yes	1882	Wood	200	1	1	750	750						
14 Live Oak	Yes	1874	Wood	250	1	1	500	500						
15 Mary Belle	Yes	1874	Wood	300	1	1	1,000	1,000						
16 Mount Gilead	Yes	1875	Wood	300	1	1	2,000	2,000						
17 Mount Olive	Yes	1907	Wood	400	1	1	900	900						
18 Mount Pisgah	Yes	1892	Wood	800	1	1	1,000	1,000						
19 New Hope	Yes	1892	Wood	200	1	1	1,300	1,300						
20 New Prospect	Yes	1907	Wood	200	1	1	1,300	1,300						
21 O'Brien	Yes	1907	Wood	400	1	1	2,000	2,000						
22 Orange	Yes	1907	Wood	400	1	1	2,000	2,000						
23 Philadelphia	Yes	1907	Wood	400	1	1	2,000	2,000						
24 Pine Level	Yes	1907	Wood	400	1	1	2,000	2,000						
25 Pleasant Hill	Yes	1907	Wood	250	1	1	600	600	65					
26 Pleasant Hill	Yes	1907	Wood	250	1	1	600	600	10					
27 Rocky Sink	Yes	1892	Wood	200	1	1	1,000	1,000						
28 Rose Mary	Yes	1892	Wood	300	1	1	900	900						
29 Shady Grove	Yes	1909	Wood	250	1	1	500	500						
30 Suwannee	Yes	1883	Wood	150	1	1	300	300						
31 Tiger Lake	Yes	1888	Wood	200	1	1	225	225						
32 Union	Yes	1900	Wood	250	1	1	1,500	1,500						
				8,000	72	97	\$576,350	\$5,750	\$76,350	\$2,000	\$223,545			

*Churches not reporting at this session of the Association. Statistics taken from latest records.
 Columns in statistical table where no entries have been made are omitted in above table.
 G. L. DORMAN, Clerk of Suwannee Baptist Association, Live Oak, Florida.
 REV. W. T. NEWSOME, Moderator of Suwannee Baptist Association, Live Oak, Florida.

TABLE NUMBER SIX
GIFTS FOR LOCAL CHURCH WORK OF SUWANNEE BAPTIST ASSOCIATION, YEAR ENDING SEPTEMBER 30, 1939

FOR SUPPORT OF LOCAL CHURCH WORK

SPECIAL INFORMATION

CHURCHES	Patron's Salary	Other Salaries	Ministerial Help	Building and Repairs	Church Debt and Interest	Incidentals	Literature for Sunday School and B. Y. P. U. and W. M. S.	Help Given to Local Poor	For Printing the Minutes and Clerk of Association	Other Objects	(Local Work) Purposes Given by the Church and All Its Organizations	Pledged to Cooperative Program	Pledged to Associational Mission	Number of Tithers	Budget System Used	Value Food and Clothing Given to Orphanage
1 Antioch	\$ 91.00	\$ 8.00	\$ 25.00	\$ 2.20	\$ 2.20	\$	\$ 3.50	\$	\$ 2.50	\$ 6.70	\$ 120.70	\$	\$			\$ 17.00
2 Belleville			21.47						1.00		40.67					
3 Bethel	125.00	25.00	25.00			12.30	6.00	5.05	1.00	3.00	17.35			3	Yes	29.90
4 Beulah	458.27	243.35	243.35	787.64		152.08	745.20		6.00	3.00	1,721.84			3		81.99
5 Bradford	150.00	15.90				11.90	24.90		5.25	2.00	208.65			5		41.37
6 Bright Pond	119.33	17.18	56.70			10.19			2.00	1.00	102.00					
7 Clayland	100.00						5.00	10.00	1.00		66.00					
8 Corinth	50.00															
9 Divonia																
10 Friendship, Hamilton	72.00	6.00	23.25						2.00	258.16	114.25	10.81	2.00			21.09
11 Friendship, Suwannee	1,500.00			154.15		186.62	72.14		7.50	17.63	2,178.57					24.82
12 Jasper	1,821.12	50.00	280.73	67.50	40.65	12.54	27.65	4.00	3.60	96.49	4,060.49	1,000.00	15.00	25	Yes	11.22
13 Jennings	2,112.50			255.60	354.34	361.50	630.83	8.50	10.00	2.15	88.05					9.00
14 Live Oak	67.45		10.00			5.45			3.00	6.50	85.50			4	Yes	61.27
15 Mary Belle	31.00		10.87	22.90		1.15	4.85	6.53	5.00	11.00	230.32					31.33
16 Mount Olive	150.00		25.31	11.50		27.31	18.00		4.00		370.63					33.09
17 Mount Olive	128.65		32.88	186.50					5.00		222.00					
18 Mount Pisgah	130.00		50.00	22.00			15.00		5.00							
19 New Prospect																
20 O'Brien	329.90		183.43			49.88			5.00		562.21					36.58
21 Orange	102.00	15.41	42.00	47.00		10.00	12.00		5.00		231.03					40.75
22 Philadelphia	400.00		114.00	8.00			71.00		6.05		537.03					65.28
23 Pine Level	84.00		15.65	241.00			14.00		2.50	5.30	531.45			2	No	19.35
24 Pine Mount	70.00		20.00		175.00		1.00		3.00		171.00			2		21.07
25 Pleasant Hill	100.00		13.25		20.00	56.00			3.00		174.25					11.60
26 Rocky Sink	46.52		20.00				8.00		4.00		28.52					
27 Rose Mary	24.36		7.25						4.00		28.36					4.40
28 Shady Grove	50.00					3.50	12.50	5.00	3.00	5.28	92.19			1		10.08
29 Suwannee	64.11		55.00	13.68		6.48	28.39		10.00	1.50	295.05			14		40.18
30 Tiger Lake	180.00			22.50		1.00			2.00		75.50			1		
31 Union	\$6,979.83	\$67.75	\$1,261.89	\$1,880.67	\$589.99	\$907.90	\$1,051.16	\$39.08	\$116.40	\$413.71	\$13,258.38	\$1,061.58	\$17,000.87			\$615.17
32 TOTALS																

*Churches not reporting by letter at this session of the Association.

Note: Names of Church Treasurers will be found in Table 7.
G. L. DORMAN, Clerk of Suwannee Baptist Association, Live Oak, Florida.
REV. W. T. NEWSOME, Moderator of Suwannee Baptist Association, Live Oak, Florida.

TABLE NUMBER SEVEN
GIFTS FOR MISSIONS, EDUCATION AND ALL BENEVOLENCE OF THE SUWANNEE BAPTIST ASSOCIATION, YEAR ENDING SEPTEMBER 30, 1939

CHURCHES	REGULAR TREASURERS AND POST OFFICES	Total to Co-operative Program	Special to Associational Missions	Special to State Missions	Special to Home Missions	Special to Foreign Missions	Special to Schools and Colleges	Special to Theological Seminaries	Special to Orphanage	Special to Hospitals	Special to Relief Ministers' to Old (Missions, Etc.)	Other Special Gifts	Total Given for Missions and Benevolences by the Church and All Its Organizations	Grand Total for All Purposes—Both Local and Church and All Its Organizations
1 Antioch	Mrs. A. K. Evans, Live Oak, Fla.	\$	\$	\$	\$	\$	\$	\$	\$	\$	\$	\$	\$ 17.00	\$ 137.70
2 Belleville	Geo. H. Perry, Lake Park, Ga.												56.41	233.79
3 Bethel	Mrs. Carrie Pert, Dowling Park, Fla.	16.58							39.56		1.75		162.71	1,884.55
4 Beulah	W. A. Jordan, Live Oak, Fla.	85.05	21.50						54.72				109.77	3,155.47
5 Bradford	J. W. Mears, Branford, Fla.								33.32				41.37	294.36
6 Bright Pond	T. E. Clardy, Jasper, Fla.			9.55					41.37	2.10			85.71	1,020.00
7 Clayland	C. A. Landen, Live Oak, Fla.	27.52	5.25											69.40
8 Corinth	H. Burnett, Jasper, Fla.													
9 Divonia	J. W. McCall, Jasper, Fla.								2.50		.90		3.40	
10 Friendship, Hamilton	J. A. Aldrich, Jasper, Fla.	10.81							21.09				31.90	146.15
11 Friendship, Suwannee	Cartlee McDaniel, Pine Mount, Fla.	204.56	88.00	11.88	17.37	16.40	8.00		57.50				403.71	2,882.28
12 Jasper	W. M. Hunter, Jasper, Fla.	13.44	5.50	9.25	16.50	3.75	1.00		47.81	1.02			98.27	5,038.96
13 Jennings	M. E. Tompkins, Jennings, Fla.	899.88	15.00	40.38	48.29	74.89	19.00		93.34	12.87			1,348.75	5,809.24
14 Live Oak	T. W. Blackstone, Live Oak, Fla.								9.00				9.00	97.05
15 Mary Belle	J. W. Pitts, Live Oak, Fla.												28.25	114.05
16 Mount Olive	Mrs. C. A. Griffin, Falmouth, Fla.	10.75		2.00	3.00	3.00		1.00	73.27		1.14		154.35	385.07
17 Mount Olive	T. A. Knight, Wellborn, Fla.	49.27		32.17	12.85				31.13				43.98	414.00
18 Mount Pisgah	J. M. Crews, Pine Mount, Fla.								33.09				49.59	271.59
19 New Hope	J. E. Bland, Jasper, Fla.	4.50	12.00										121.58	689.79
20 O'Brien	Mrs. W. T. Smith, O'Brien, Fla.	63.34	5.00						35.54		3.00		64.06	301.09
21 Orange	S. C. Landen, Live Oak, Fla.	18.33							40.75				185.56	784.61
22 Philadelphia	A. C. Newbern, Live Oak, Fla.	29.00		2.00		4.00			66.00		3.00		136.60	551.05
23 Pine Level	Mrs. E. Lever, Live Oak, Fla.	6.77							6.83				19.35	133.85
24 Pine Mount	Mrs. E. W. Revatt, Pine Mount, Fla.								19.35				24.07	195.33
25 Pleasant Hill	Mrs. Mac Scott, Live Oak, Fla.								11.60				14.60	93.12
26 Rocky Sink	Clyde Thomas, Live Oak, Fla.								4.40				4.40	28.36
27 Rose Mary	Mrs. J. W. Tippet, Live Oak, Fla.								4.40				4.40	106.59
28 Shady Grove	Proctor Phillips, Live Oak, Fla.			3.32					10.08				18.40	106.59
29 Suwannee	J. M. Robinson, Live Oak, Fla.	139.40	17.35						138.38				475.58	774.58
30 Tiger Lake	Miss Ruth M. Holmes, Live Oak, Fla.												1.50	77.00
31 Union														
32 TOTALS		\$1,579.18	\$152.25	\$124.58	\$102.24	\$103.54	\$36.50	\$1.00	\$974.09	\$15.99	\$9.79	\$845.82	\$3,444.98	\$16,709.36

*Churches not reporting by letter at this session of the Association.

G. L. DORMAN, Clerk of Suwannee Baptist Association, Live Oak, Florida.
REV. W. T. NEWSOME, Moderator of Suwannee Baptist Association, Live Oak, Florida.

HISTORICAL TABLE

Date	Church	Moderator	Clerk	Preacher
1876	Antioch.....	B. D. Harrell	R. F. Rogers	J. R. Kimbrow
1877	Mt. Pleasant.....	M. A. Clonts	R. F. Rogers	J. G. Taylor
1878	Piquet Lake.....	J. N. Reid	J. M. Caldwell....	B. R. Mosley
1879				
1880	Mt. Pleasant.....	D. F. Ward	J. M. Caldwell....	R. W. Phillips
1881				
1882	Midway.....	W. B. High	J. W. Grantham..	J. W. Fleming
1883	Friendship.....	W. B. High	J. W. Grantham..	J. W. Fleming
1884				
1885	Piquet Lake.....	W. B. High	J. W. Grantham..	J. W. Grantham
1886	Mt. Gilead.....	B. D. Harrell	W. B. High	Z. Dees
1887	Tiger Lake.....	B. D. Harrell	W. J. Carroll	B. D. Harrell
1888	Half Moon Lake	B. D. Harrell	W. C. Johnson....	F. W. Wells
1889	Philadelphia.....	B. D. Harrell	A. J. Carroll	E. Trice
1890	Clayland.....	W. J. Carroll	H. C. Sealy	W. J. Carroll
1891	Hatch Bend.....	B. D. Harrell	C. L. Mills	T. J. Kelly
1892	Mt. Pisgah.....	J. F. Tatum	R. A. Reid	
1893	Rocky Sink.....	B. D. Harrell	R. A. Reid	E. B. Mills
1894	Tiger Lake.....	R. W. Phillips	R. A. Reid	B. D. Harrell
1895	Friendship.....	R. W. Phillips	R. A. Reid	W. C. Lee
1896	Mt. Olive.....	R. W. Phillips	R. A. Reid	J. J. Holmes
1897	Rocky Sink.....	R. W. Phillips	J. R. Newlan	A. Bond
1898	O'Brien.....	B. D. Harrell	C. L. Mills	W. C. Lee
1899	Live Oak.....	W. S. Hodge	C. L. Mills	J. F. Tatum
1900	Antioch.....	W. S. Hodge	C. L. Mills	A. J. Reamy
1901	Mt. Gilead.....	W. S. Hodge	C. L. Mills	B. M. Bean
1902	Union.....	J. F. Tatum	W. W. Leggett....	L. D. Geiger
1903	Evergreen.....	J. R. Newlan	C. L. Mills	J. F. Tatum
1904	Philadelphia.....	J. R. Newlan	R. R. Brown	F. C. Edwards
1905	Clayland.....	J. R. Newlan	R. R. Brown	J. S. Parker
1906	Live Oak.....	B. D. Harrell	R. R. Brown	E. H. Reynolds, Sr.
1907	Jennings.....	B. A. Geiger	W. H. Mills	G. A. Nunally
1908	Orange.....	B. A. Geiger	S. D. Huggins....	A. J. York
1909	O'Brien.....	B. A. Geiger	S. D. Huggins....	W. H. Holmes
1910	Antioch.....	J. R. Wells	S. D. Huggins....	F. H. Watkins
1911	Rocky Sink.....	A. J. York	H. B. Brown	F. H. Watkins
1912	Antioch.....	A. J. York	R. J. Allen	W. R. Ivey
1913	Jasper.....	A. J. York	R. J. Allen	H. A. Jordan
1914	Jennings.....	A. J. York	R. J. Allen	J. B. Dixon
1915	Philadelphia.....	A. J. York	R. J. Allen	W. B. Parshley
1916	Tiger Lake.....	A. J. York	R. J. Allen	H. A. Jordan
1917	Antioch.....	T. L. Peacock	G. L. Dorman	A. B. Canady
1918	Mt. Olive.....	A. J. York	G. L. Dorman	Gus Padgett
1919	Clayland.....	A. J. York	G. L. Dorman	S. B. Cole
1920	Beulah.....	A. J. York	G. L. Dorman	J. A. Davis
1921	Jasper.....	E. R. Wise	G. L. Dorman	W. C. Taylor
1922	Tiger Lake.....	E. R. Wise	G. L. Dorman	P. A. Roberts
1923	Mt. Gilead.....	W. C. Taylor	G. L. Dorman	W. C. Taylor
1924	Jasper.....	W. C. Taylor	G. L. Dorman	W. W. William
1925	O'Brien.....	W. C. Taylor	G. L. Dorman	E. G. Diamond
1926	Orange.....	W. C. Taylor	G. L. Dorman	W. C. Taylor
1927	Live Oak.....	L. B. White	G. L. Dorman	R. P. McPherson....
1928	Tiger Lake.....	Jacob A. Johnson	G. L. Dorman	E. A. McDowell
1929	Bright Pond.....	R. J. Bush	G. L. Dorman	None
1930	Clayland.....	H. J. Horne	G. L. Dorman	A. M. Parker
1931	Branford.....	H. J. Horne	G. L. Dorman	Dr. E. D. Solomon
1932	Philadelphia.....	H. J. Horne	G. L. Dorman	W. T. Newsome
1933	Pleasant Hill.....	H. J. Horne	G. L. Dorman	H. O. Hughes
1934	Mount Olive.....	H. J. Horne	G. L. Dorman	Dr. John E. Evans
1935	Live Oak.....	John E. Evans....	G. L. Dorman	H. O. Hughes
1936	New Hope.....	John E. Evans....	G. L. Dorman	W. C. Taylor
1937	Jasper.....	H. O. Hughes	G. L. Dorman	Dr. E. D. Solomon..
1938	O'Brien.....	W. T. Newsome..	G. L. Dorman	A. M. Parker
1939	Branford.....	W. T. Newsome..	G. L. Dorman	W. H. Gray

State Florida Asso. Juwannee Jasper
 Church Jasper

Value of Pastor's Home, if any \$ 4000⁰⁰
 Value of Church Building and Grounds \$ 20,000⁰⁰
 Total value of all Church Property \$ 24,000⁰⁰

If pastor's home is not owned by the church please indicate on blank line above)