

✓x

**SUWANNEE
MISSIONARY BAPTIST
ASSOCIATION**

FLORIDA

Sixty-Seventh Annual Session

Held With
O'Brien Baptist Church
October 13-14, 1938

1938

Next Session Of The Association Will Be
Held With Branford Baptist Church
Suwannee County

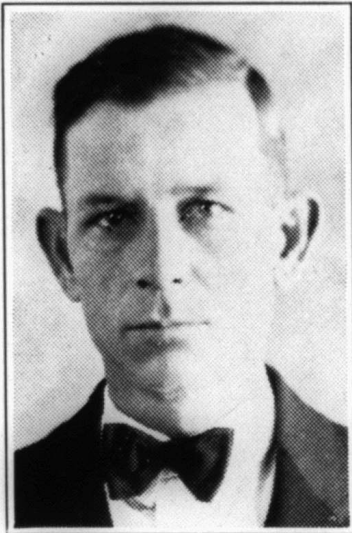
October 12-13 1939

✓x

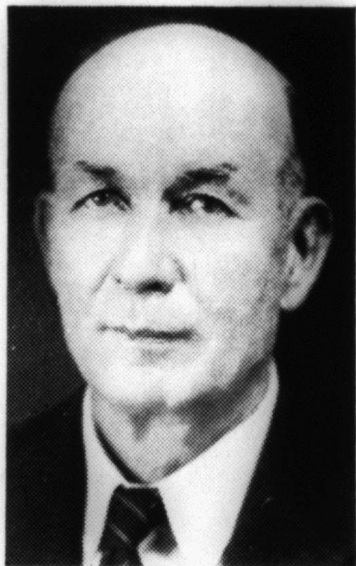
11/7/38

on time

Fla.



REV. W. T. NEWSOME
Moderator of Association



G. L. DORMAN
Clerk of Association

MINUTES
OF THE
SIXTY-SEVENTH ANNUAL SESSION
OF THE
SUWANNEE MISSIONARY BAPTIST
ASSOCIATION
FLORIDA
HELD WITH
O'BRIEN BAPTIST CHURCH

OCTOBER 13-14, 1938

Next Session of the Association
Will Be Held With
Branford Baptist Church, Suwannee County,
October 12-13, 1939.

Rev. W. T. Newsome, Moderator, Live Oak, Florida.
E. T. Horne, Vice-Moderator, Live Oak, Florida
G. L. Dorman, Clerk, Live Oak, Florida.
R. E. Hatch, Treasurer, Branford, Florida.

INDEX

	Section	Page
Articles of Faith		6
Auxiliary Meetings		14
By-Laws		10
Church Directory:		
B. T. U. Officers		40
Choir Directors		40
Church Clerks		38
Director Layman's Brotherhood		40
Ordained Ministers in Association		37
Pastors		37
Regular Church and Benevolence Treasurers		39
Sunday School Superintendents		38
W. M. S. Presidents		40
Committees Appointed	11	18
Constitution		9
Directory of Association:		
Chairmen of Committees to Report at next Session		13
Chairmen of W. M. U. Committees		14
Executive Committee		13
Members of State Board		13
Messengers to State Convention		13
Next Session		13
Officers of Association		13
Sermon Introductory		13
Sermon Missionary		13
Woman's Missionary Union		13
Historical Table		48
Map		24-25
Memorial Page		36
Messengers 1938 Session		14-15
Order of business		5
Record of Proceedings		17
Reports:		
Baptist Training Union	29	29
Co-Operative Program	14	19
Christian Education	27	27
Digest of Letters	36	32
Executive Committee	10	17
Finance	44	33
Florida Baptist Children's Home	26	26
Foreign Missions	17	22
Home Missions	16	21
Hundred Thousand Club	19	23
Ministerial Relief and Annuities	34	29
Nominations	37	32
Obituaries	38	32
Religious Literature	25	26
Resolutions	40	33
Social Service	35	30
State Missions	15	20
Sunday School	28	28
Treasurer's Report	45	33
Woman's Missionary Union		34
Statistical Tables		41-47
Visitors		15-16

ORDER OF BUSINESS

THURSDAY MORNING SESSION

- 10:00 A. M.—Devotional.
- 10:15 A. M.—Organization. Enrollment of Messengers. Election of Officers. Report of Executive Committee. Reading of Petitionary Letters. Recognition of Visitors. Announcements.
- 11:00 A. M.—Introductory Sermon.
- 12:00—Noon.

THURSDAY AFTERNOON SESSION

- 1:30 P. M.—Devotional. Announcements of Committees.
- 1:45 P. M.—Religious Literature.
- 2:15 P. M.—Temperance Report. Address.
- 2:45 P. M.—Reports on: Co-Operative Program, State Missions, Home Missions, Foreign Missions. Address on "World Missions."
- 4:30 P. M.—Adjourn.

FRIDAY MORNING SESSION

- 9:30 A. M.—Devotional.
- 9:45 A. M.—Reading of Minutes of Previous Day. Recognition of Visitors.
- 10:00 A. M.—Children's Home Report. Address.
- 10:15 A. M.—S. S. and B. Y. P. U. Report.
- 11:00 A. M.—Missionary Sermon.
- 12:00—Noon.

FRIDAY AFTERNOON SESSION

- 1:15 P. M.—Devotional.
- 1:30 P. M.—Christian Education.
- 1:45 P. M.—Reports on Obituaries, Finance, Nominations, Resolutions, Miscellaneous.
- 2:15 P. M.—Doctrinal Sermon.

ARTICLES OF FAITH**1. OF THE SCRIPTURES**

We believe that the Holy Bible was written by men Divinely inspired, and is a perfect treasure of heavenly instruction; that it has God for its Author, salvation for its end, and truth without any mixture of error for its matter; that it reveals the principles by which God will judge us; and therefore is, and shall remain to the end of the world, the true center of Christian union, and the supreme standard by which all human conduct, creeds, and opinions should be tried.

2. OF THE TRUE GOD

We believe that there is One, and only One living and true God, an Infinite, intelligent Spirit, Whose Name is Jehovah, the Maker and Supreme Ruler of Heaven and Earth; inexpressibly glorious in Holiness, and worthy of all possible honor, confidence and love; that in the Unity of the Godhead there are Three Persons, the Father, the Son, and the Holy Ghost; equal in every Divine Perfection, and executing distinct but harmonious Offices in the great work of Redemption.

3. OF THE FALL OF MAN

We believe that Man was created in holiness, under the law of his Maker; but by voluntary transgression fell from that holy and happy state; in consequence of which all Mankind are now sinners, not by constraint but choice; being by nature utterly void of that holiness required by the law of God; positively inclined to evil; and therefore under just condemnation to eternal ruin, without defense or excuse.

4. OF THE WAY OF SALVATION

We believe that the salvation of sinners is wholly of Grace; through the Mediatorial office of the Son of God; Who by the appointment of the Father, freely took upon Him our nature, yet without our sin; honored the Divine law by His Personal obedience, and by His death made a full Atonement for our sins; that having risen from the dead, He is now enthroned in heaven; and uniting in His wonderful Person the tenderest sympathies with Divine Perfections, He is every way qualified to be a suitable, a compassionate, and all-sufficient Saviour.

5. OF JUSTIFICATION

We believe that the great Gospel blessing which Christ secures to such as believe in Him is Justification; that Justification includes the pardon of sin, and the promise of eternal life on principles of righteousness; that it is bestowed, not in consideration of any works of righteousness which we have done, but solely through Faith in the Redeemer's Blood; by virtue of which faith His perfect righteousness is freely imputed to us of God; that it brings us into a state of most blessed peace and favor with God, and secures every other blessing needful for time and eternity.

6. OF THE FREENESS OF SALVATION

We believe that the blessings of salvation are made free to all by the Gospel; that it is the immediate duty of all to accept them by a cordial penitent and obedient faith; and that nothing prevents the salvation of the greatest sinner on earth, but his own inherent depravity and voluntary rejection of the Gospel; which involves him in an aggravated condemnation.

7. OF GRACE IN REGENERATION

We believe that in order to be saved, sinners must be regenerated, or born again; that regeneration consists in giving a holy disposition to the mind; that it is effected in a manner above our comprehension by the power of the Holy Spirit, in connection with Divine truth, so as to secure our voluntary obedience to the Gospel; and that its proper evidence appears in the holy fruits of repentance, and faith, and newness of life.

8. OF REPENTANCE AND FAITH

We believe that Repentance and Faith are sacred duties, and also inseparable Graces, wrought in our souls by the regenerating Spirit of God; whereby being deeply convinced of our guilt, danger and helplessness, and of the way of salvation by Christ, we turn to God with unfeigned contrition, confession, and supplication for mercy; at the same time heartily receiving the Lord Jesus Christ as our Prophet, Priest and King, and relying on Him alone as the Only and All-sufficient Saviour.

9. OF GOD'S PURPOSE OF GRACE

We believe that Election is the Eternal purpose of God, according to which He graciously regenerates, sanctifies, and saves sinners; that being perfectly consistent with the free agency of man, it comprehends all the means in connection with the end; that it is a most glorious display of God's Sovereign Goodness, being Infinitely free, wise, holy and unchangeable; that it utterly excludes boasting, and promotes humility, love, prayer, praise, trust in God, and active imitation of His free mercy; that it encourages the use of means in the highest degree; that it may be ascertained by its effects in all who truly believe the Gospel; that it is the foundation of Christian assurance; and that to ascertain it with regard to ourselves demands and deserves the utmost diligence.

10. OF SANCTIFICATION

We believe that Sanctification is the process by which, according to the Will of God, we are made partakers of His Holiness; that it is a progressive work; that it is begun in regeneration; and that it is carried on in the hearts of believers by the presence and power of the Holy Spirit, the Sealer and Comforter, in the continual use of the appointed means—especially, the Word of God, self-examination, self-denial, watchfulness and prayer.

11. OF THE PERSEVERANCE OF SAINTS

We believe that such only are real believers as endure unto the end; that their persevering attachment to Christ is the grand mark which distinguishes them from superficial professors; that a special Providence watches over their welfare; and they are kept by the power of God through faith unto salvation.

12. OF THE HARMONY OF THE LAW AND THE GOSPEL

We believe that the Law of God is the eternal and unchangeable rule of His moral government; that it is holy, just, and good; and that the inability which the Scriptures ascribe to fallen men to fulfill its precepts, arises entirely from their love of sin; to deliver them from which, and to restore them through a Mediator to unfeigned obedience to the holy Law, is one great end of the Gospel, and of the Means of Grace connected with the establishment of the visible Church.

13. OF THE GOSPEL CHURCH

We believe that a visible Church of Christ is a Congregation of baptized believers, associated by Covenant in the faith and fellowship of the Gospel; observing the Ordinances of Christ; governed by His Laws; and exercising the gifts, rights, and privileges invested in them by His Word; that its only Scriptural officers are Bishops or Pastors and Deacons, whose qualifications, claims, and duties are defined in the Epistles to Timothy and Titus.

14. OF BAPTISM AND THE LORD'S SUPPER

We believe that Christian baptism is the immersion in water of a believer, into the Name of the Father, and Son, and Holy Ghost; to show forth in a solemn and beautiful emblem, our faith in the crucified, buried, and risen Saviour, with its effects, in our death to sin and resurrection to a new life; that it is a pre-requisite to the privileges of a Church relation; and to the Lord's Supper, in which the members of the Church by the sacred use of bread and wine, are to commemorate together the dying love of Christ; preceded always by solemn self-examination.

15. OF THE CHRISTIAN SABBATH

We believe that the first day of the week is the Lord's Day, or Christian Sabbath; and is to be kept sacred to religious purposes, by abstaining from all secular labor and sinful recreations, by the devout observance of all the means of Grace, both private and public; and by preparation for that rest that remaineth for the people of God.

16. OF CIVIL GOVERNMENT

We believe that Civil Government is of Divine appointment, for the interests and good order of human society; and that magistrates are to be prayed for, conscientiously honored, and obeyed; except only in things opposed to the Will of our Lord Jesus Christ, Who is the only Lord of the conscience, and the Prince of the kings of the earth.

17. OF THE RIGHTEOUS AND THE WICKED

We believe that there is a radical and essential difference between the righteous and the wicked; that such only as through faith are justified in the Name of the Lord Jesus, and sanctified by the Spirit of Our God, are truly righteous in His esteem; while all such as continue in impenitence and unbelief are in His sight wicked, and under the curse; and this distinction holds among men both in and after death.

18. OF THE WORLD TO COME

We believe that the end of this world is approaching; that at the Last Day, Christ will descend from heaven, and raise the dead from the grave to final retribution; that a solemn separation will then take place; that the wicked will be adjudged to endless punishment, and the righteous to endless joy; and that this judgment will fix forever the final state of men in heaven or hell, on principles of righteousness.

CONSTITUTION**Article 1—Name**

This Organization shall be known as the SUWANNEE MISSIONARY BAPTIST ASSOCIATION.

Article 2—Purpose

The Purpose of this Association shall be: To furnish a medium of Co-operation for the Churches of the Association in their Divinely commissioned work of Missions, Education, and Benevolences; and to this end we seek to bring into co-operative fellowship the energies of our Churches; and to secure the moral and financial support of our Churches for the Objects and Institutions fostered by the Florida Convention of Baptist Churches, and the Southern Baptist Convention.

Article 3—Churches

The Constituents of this Association shall be Missionary Baptist Churches of regular order, presenting petitionary letters from other Associations in due form; and Churches which may be constituted within the bounds of the Association, presenting proper credentials of organization and Articles of Faith, accompanied by properly accredited Messengers.

Article 4—Messengers

This Association shall be composed of Messengers holding membership in the Churches which constitute the Association; these Messengers having been duly elected by their respective Churches on the following basis: Each Church shall be entitled to Three Messengers without reference to their numerical strength; and one additional Messenger for each Twenty-five members or fraction thereof, after it has attained a membership of Fifty members.

Article 5—Officers

The Officers of this Association shall be: A Moderator, a Vice-Moderator, a Clerk, and a Treasurer; who shall be elected annually by ballot at the beginning of each Annual Meeting of the Association; and no person shall be elected Moderator for more than two consecutive years.

Article 6—Meetings

1. This Association shall meet Annually, Thursday and Friday after the second Sunday in October; at such Time and Place as the Association shall have selected at its last Annual Session.

2. In addition to the Annual Meeting, there shall be held a Union Meeting each Fifth Sunday; the Time, Place, and Program to be provided for by the Executive Committee.

3. In the event of an emergency, the Executive Committee is authorized to make changes in the Time and Place for the Annual Meeting, as will best serve the interests of the Association.

Article 7—Amendments

The Constitution and By-Laws of the Association may be amended at any Annual Meeting of the Association, by a two-thirds majority vote of the Messengers.

BY-LAWS**Section 1—Duties of Officers**

1. The Duties of the Moderator shall be to preside, preserve order, and appoint all Committees not otherwise provided for in the Constitution and By-Laws.

2. The duties of the Vice-Moderator shall be to assist the Moderator; and to preside in the absence of, or at the request of, the Moderator.

3. The Clerk shall keep a correct record of the proceedings of the Association; supervise the printing and distribution of the Minutes; keep a regular file of the published proceedings of the Association; and deliver same with other material belonging to the office to his successor.

The Clerk shall send to the clerks of the Churches of the Association the Associational Letter Form Blanks thirty days prior to the Annual Meeting; also the material to the Chairmen of the Standing Committees, who are to submit reports of our work at the Annual Session.

The Clerk shall notify after the adjournment of the Association, all Persons, Committees, and Chairmen of the Standing Committees, of their elections or appointments of service.

The Clerk shall receive remuneration for his services, the sum to be fixed by the Association at each Annual Meeting; also he shall receive additional funds from the Association for the expenses of his office.

4. The Treasurer shall keep a correct record of all Associational Funds received and disbursed by his Office; and shall submit a record of all transactions of his Office to the Association at its Annual Meeting. The Treasurer shall be the Chairman of the Finance Committee.

5. The duties of the Executive Committee shall be to transact all business of the Association between its Annual Meetings; and a written report of its work shall be submitted to the association at its Annual Session.

The Executive Committee shall elect its own Chairman and Clerk; and fix the Time and Place for its Meetings between the Annual Sessions of the Association.

In the event a vacancy occurs in any office of the Association between the Annual Meetings; the Executive Committee is authorized to fill such vacancy for the unexpired term of office; if not otherwise provided for in the Constitution and By-Laws.

Section 2—Committees

1. The Standing Committees of the Association shall be: 1—Executive Committee; 2—Order of Business; 3—State Missions; 4—Home Missions; 5—Foreign Missions; 6—Religious Literature; 7—Christian Education; 8—Sunday Schools; 9—Baptist Training Union; 10—Woman's Missionary Union; 11—Laymen's Work—Brotherhood; 12—Florida Baptist Children's Home; 13—Ministerial Relief and Annuities; 14—Social Service. Also other Committees as the Association shall deem advisable.

2. The Special Committees of the Association shall be: 1—Nominations; 2—Finance; 3—Resolutions; 4—Obituaries; 5—Digest of Letters—State of Religion. Also other Committees as the Association shall deem advisable.

Section 3—Committees. Appointment Of

1. All Standing Committees shall consist of Three Members; who shall be appointed by the Moderator; the Chairman being selected in advance; the others at each Annual Session.

2. All Special Committees shall consist of not less than Three nor more than Five Members; who shall be appointed by the Moderator at each Annual Session.

3. The Committees on Order of Business shall consist of Three Members; Two of which shall be the Moderator and the Chairman of the Executive Committee; the third member shall be appointed by the Moderator at each Annual Meeting.

4. The Executive Committee of this Association shall consist of Seven Members; and the Officers of the Association, together with the Pastors serving some Church in the Association, whose membership is in some Church in the Association—shall be Ex-Officio members of the Executive Committee.

Section 4—Committees. Duties Of

1. The duties of the Standing Committees and the Special Committees, shall be those which are commonly understood, and observed by Baptist Associations and Conventions, as suggested by their names.

2. The duties of the Committee on the Order of Business shall be to prepare the Program for each Annual Meeting; and to select the Speakers not otherwise provided for in the Constitution and By-Laws.

3. The duties of the Nominating Committee shall be:

To name the Time and Place for the Annual Meeting.

To name the Preachers and Alternates for the Annual Introductory and Missionary Sermons.

To name the Associational Member of the State Board of Missions of the Florida Convention of Baptist Churches.

To name the Associational Messengers to the Florida Convention of Baptist Churches.

To name the Executive Committee.

All nominations subject to adoption by the Association.

Section 5

The Association shall have an Introductory and a Missionary Sermon at each Annual Meeting, on the first and second days respectively; the hours for the sermons to be provided for in the Order of Business.

Section 6

The fiscal year of the Association shall begin October first of each year, and end September thirtieth of the following year, both dates inclusive; and all reports to the Association shall conform to these dates.

Section 7

All written reports of Committees shall be limited to a maximum of six hundred words; and the Clerk is authorized if necessary, to edit reports to conform to this word limitation.

Section 8

When a Church fails to send an Annual letter, the Clerk shall use the report of the previous year, with reference only to record of membership of Church and organizations.

Section 9

The Association requests that Church clerks prepare and mail to the Clerk of the Association their Annual Church Letter, ten days before the Annual Meeting.

Section 10

The Parliamentary Law which shall be used by this Association in the government of its business proceedings, shall be Kerfoot's Parliamentary Law.

It is also understood, that this Association shall ever adhere to the Principles and Practices of recognized Baptist Policies in all its procedures, its methods, and its work.

DIRECTORY OF THE ASSOCIATION

OFFICERS

Rev. W. T. Newsome, Moderator Live Oak, Fla.
 E. T. Horne, Vice-Moderator Live Oak, Fla.
 G. L. Dorman, Clerk and Cor. Sec. Live Oak, Fla.
 R. E. Hatch, Treasurer Branford, Fla.

EXECUTIVE BOARD OFFICERS

S. C. Kierce, Chairman Live Oak, Fla.
 J. M. N. Clark Live Oak, Fla.
 H. V. Johns Live Oak, Fla.
 E. T. Horne Live Oak, Fla.
 A. O. Dorsett Branford, Fla.
 W. M. Hunter Jasper, Fla.
 W. S. Ward Live Oak, Fla.
 W. T. Newsome, member ex-officio Live Oak, Fla.
 G. L. Dorman, member ex-officio Live Oak, Fla.

CHAIRMEN OF COMMITTEES TO REPORT IN 1939

Baptist Training Union Mrs. C. E. Lawrence, Falmouth, Fla.
 Brotherhood-Laymen's Work Dr. G. A. Lee, Live Oak, Fla.
 Christian Education Mrs. John E. Evans, Live Oak, Fla.
 Co-operative Program A. M. Parker, Mayo, Fla.
 Evangelism Dr. John E. Evans, Live Oak, Fla.
 Fla. Baptist Children's Home Clyde M. Harrell, Live Oak, Fla.
 Foreign Missions H. O. Hughes, Jasper, Fla.
 Home Missions H. H. Link, Orlando, Fla.
 Hundred Thousand Club Miss Hattie Platt, Live Oak, Fla.
 Ministerial Relief and Annuities W. H. Gray, Live Oak, Fla.
 Order of Business Dr. John E. Evans, Live Oak, Fla.
 Religious Literature R. E. Hatch, Branford, Fla.
 Social Service Mrs. T. J. Fletcher, O'Brien, Fla.
 State Missions R. M. Bush, Jennings, Fla.
 Sunday School S. C. Kierce, Live Oak, Fla.
 Woman's Missionary Work Mrs. J. L. McDaniel, Jennings, Fla.

NEXT SESSION

Branford Baptist Church, Branford, Fla. October 12-13, 1939

SERMONS

Introductory Sermon W. H. Gray, Live Oak, Fla.
 Alternate H. H. Link, Orlando, Fla.
 Missionary Sermon A. H. Townsend, Perry, Fla.
 Alternate A. B. Franklin, Live Oak, Fla.

MESSENGERS TO STATE CONVENTION

R. E. Hatch Branford, Fla.
 S. C. Kierce Live Oak, Fla.
 G. L. Dorman Live Oak, Fla.
 W. M. Hunter Jasper, Fla.

MEMBER OF STATE BOARD

Dr. John E. Evans Live Oak, Fla.

WOMAN'S MISSIONARY UNION

OFFICERS

Mrs. J. L. McDaniel, President Jennings, Fla.
 Mrs. Kirby Sandlin, Vice-President Jasper, Fla.
 Mrs. Ed Herndon, Sec. & Treas. Jasper, Fla.
 Mrs. Phil Goff, Superintendent Suwannee Co. Live Oak, Fla.
 Mrs. J. H. Corbett, Superintendent Hamilton Co. Jasper, Fla.

CHAIRMEN OF W. M. U. COMMITTEES TO REPORT IN 1939

Personal Service	Mrs. W. B. Lewis, Jasper, Fla.
Margaret Fund	Mrs. Q. W. McCall, Jennings, Fla.
Training School	Mrs. T. J. Blanchard, Live Oak, Fla.
Stewardship	Mrs. T. J. Fletcher, O'Brien, Fla.
Publicity	Mrs. J. E. Bland, Jasper Fla.
White Cross	Mrs. W. M. McLeod, Live Oak, Fla.
Mission Study	Mrs. G. C. Bryant, Live Oak, Fla.
Young People Chairman	Mrs. W. A. Hunter, Live Oak, Fla.
Member Children's Home Association.....	Mrs. J. E. Evans, Live Oak, Fla.
Members at Large	Mrs. C. E. Lawrence, Falmouth, Fla. Mrs. George Carver, Branford, Fla.
Hundred Thousand Club	Mrs. B. G. Bell, Falmouth, Fla.

The place of the Associational W. M. U. meeting (1939 session) is to be selected by Executive Committee and time to be set by Miss Louise Smith, State Secretary.

WE HAVE NO ASSOCIATIONAL MISSIONARY OR OTHER PAID EMPLOYEE, SUNDAY SCHOOL OR B. Y. P. U. CONVENTIONS, REPRESENTATIVES OF THE BROTHERHOOD, BAPTIST SCHOOLS, HOSPITALS, ENCAMPMENT OR ORPHANAGES, STATE OR SOUTHWIDE BOARD OR INSTITUTION WITHIN THE BOUNDS OF THE SUWANNEE BAPTIST ASSOCIATION.

AUXILIARY MEETING W. M. U.

W. M. U. meets annually. place to be selected by the executive committee. Time by Miss Louise Smith for the 1939 session Full report given elsewhere in this book under W. M. U. report.

WE HAVE NO OTHER AUXILIARY MEETINGS WITHIN THE BOUNDS OF THIS ASSOCIATION.

LIST OF MESSENGERS 1938 SESSION

ANTIOCH —Rev. E. R. Wise, Mrs. E. R. Wise, F. B. Brinson, Mrs. F. B. Brinson.
BELLEVILLE —No report.
BETHEL —No report
BEULAH —M. J. Allbritton, W. J. Starling, Mrs. W. J. Starling, G. D. Lyons.
BRANFORD —A. O. Dorsett, C. E. Lease, Mrs. H. J. Granger, G. R. Carver, Mrs. F. D. Phillips.
BRIGHT POND —B. M. Smith, L. Smith, Lovida Smith, Bulah Rae Smith, Mrs. Eliza Smith, Mrs. Palmer Smith.
CLAYLAND —Omer H. Ward, G. M. Brim, Millage Ward, C. A. Landen, Leon Mills.
CORINTH —H. Burnett, N. Morgan, Woodrow Morgan.
DIVONIA —J. B. Ellis, W. A. McCall, Sarah McCall, Julia Wheeler, Mollie Hunter.
FRIENDSHIP, HAMILTON —No Messengers.
FRIENDSHIP, SUWANNEE —A. A. Smith, C. L. Jenkins, C. A. Lington, J. W. Jenkins.
JASPER —H. O. Hughes, F. B. Harrell, Mrs. Geo. Hyman, Harry T. Reid, Miss Mammie Griffis, Mrs. H. O. Hughes, Mrs. F. B. Harrell, W. M. Hunter, Mrs. J. J. Sechrest, K. L. Sandlin, Mrs. J. H. Corbett, Mrs. W. H. Greene, Mrs. K. L. Sandlin.
JENNINGS —Rev. W. C. Taylor, R. M. Bush, R. W. McCall, Mrs. J. L. McDaniel.

LIVE OAK—S. C. Kierce, Rev. W. T. Newsome, Mrs. W. T. Newsome, Rev. J. E. Evans, Mrs. J. E. Evans, Dr. G. A. Lee, J. A. Johnson, Mrs. A. P. Goff, D. Howell, C. R. Smith, J. L. McMullen, Rev. E. H. Holcomb, E. B. Browning, F. W. Brennan, Mrs. W. T. McCullers.

MARY BELLE—Summer Mixon, Mrs. Effie Mixon, Oscar Wooley, Mrs. Florence Wooley.

MT. GILEAD—Mrs. Sam Hilton, Sam Hilton, Henry Warner.

MT. OLIVE—H. L. Johns, H. V. Johns, W. M. Hogan, Jewell Johns, Mrs. Roy Knight, Antone McMullen, J. W. Foster, Carlton Knight, Miss Ovie Johns, Glenn Smith.

MT. PISGAH—W. J. Williams, Mrs. W. J. Williams, W. E. Williams, Mrs. W. E. Williams, N. R. Hines, Mrs. N. R. Hines, L. E. Carver, Mrs. L. E. Carver, W. J. Clements, Mrs. W. J. Clements.

NEW HOPE—R. H. Holton, Mrs. Luna Holton, Jim Dees, Ophelia Dees, R. J. Bush.

NEW PROSPECT—No report.

O'BRIEN—J. E. Daniels, J. W. Grant, G. W. Wells, J. T. McCaghren, Mrs. Rossie Wells, I. B. Truluck, J. M. Kite, Mrs. W. T. Smith, C. W. Haynes, Mrs. J. M. Riggins.

ORANGE—Hazel Robinson, A. C. Landen, J. M. N. Clark, Mrs. J. M. N. Clark, Mrs. Meta Cameron.

PHILADELPHIA—J. Q. Boatright, Mrs. J. Q. Boatright, G. B. Ross, Mrs. G. B. Ross, Willie Wilson, Mrs. Willie Wilson, D. J. Mills, Mrs. D. J. Mills.

PINE LEVEL—E. S. Palmer, M. J. Lepper, Mrs. A. E. Lepper.

PINE MOUNT—J. O. Revels, H. L. Prevatt, J. H. Goff.

PLEASANT HILL—E. W. Bozeman, LaVaughn Sessions, W. H. Goff, E. C. Gornto.

ROCKY SINK—Gus Brown, Dewey Mitchell, Wiley Tamplin, F. C. Ledbetter, Ramond Chauncey.

ROSE MARY—D. J. Yawn, Mrs. D. J. Yawn.

SHADY GROVE—C. A. Bray, Mrs. C. A. Bray, W. L. Poole, R. L. McCall, Shelly Linton.

SUWANNEE—T. J. Phillips, Rev. Dewey Lowe, Drew Holmes, Mrs. Drew Holmes, Allen Gill, Mrs. Allen Gill, Proctor Phillips.

TIGER LAKE—H. J. Horne, Mrs. H. J. Horne, D. S. McLeod, Mrs. D. S. McLeod, J. M. Robinson, J. R. Mills, Mrs. J. R. Mills.

UNION—John D. Swails, Mrs. L. H. Holmes, L. H. Holmes.

VISITORS

Dr. C. M. Brittian, Mrs. C. M. Brittian of Jacksonville, Bro. W. O. Rains, Rev. A. M. Parker, Mrs. D. H. Ward, Mrs. R. G. Ware, Mrs. Guy McLain from Middle Fla. Association. Rev. T. W. Allen of Beulah Association. Bro. G. W. S. Ware of the Santa Fe Association. Prof. T. M. Johns, Supt. of Orphanage, Arcadia.

Visitors enrolled from this Association: Ivey Tamplin, Mrs. R. L. Chauncey, Mrs. Ivey Tamplin, Mrs. Gus Brown, Mrs. Preston Moore, H. B. Brown, Bessie Boatright, Mrs. E. C. Gornto, Mrs. Jake Riggins, Mrs. A. A. McInnis, Mrs. R. H. Roberts, Mrs. W. E. Hunt, Mrs. R. Staack, R. Staack, Mrs. H. L. Prevatt, Mrs. D. F. Jenkins, Mrs. Nellie Mosley, Miss Edith Ackley, Mrs. Josie Ford, Mrs. Lois Griffin, Mrs. John Grant, Mrs. J. E. Daniels, Mrs. Mammie Roberts, Mrs. A. O. Dorsett, Mrs. F. W. Brennan, Mrs. C. M. Harrell, Mrs. H. V. Johns, Mrs. E. T. Horne, E. T. Horne, Mrs. T. J. Clements, Miss Carmine Toole, Miss Sadie Smith, Mrs. D. T. Smith, S. G. Ward, Mrs. R. E. Hatch, R. E. Hatch, W. C. Crews, Mrs. J. E.

Bland, Miss Grace Culbreth, Miss Gladys Bland, Miss Willie Culbreth, Mrs. V. J. Albritton, J. E. Bland, Mrs. W. S. Ward, Mrs. J. G. North, Rev. H. H. Link, Rev. A. B. Franklin, Rev. T. J. Ellis, Miss Lillie Roberts, Mrs. Nellie Roberts, Mrs. W. L. Robinson, Mrs. Ferbish Thompson, Miss Callie Dorman, Rev. W. H. Gray, Mrs. G. M. Harrell, Mrs. G. L. Dorman, Mrs. C. A. Griffin, Clifford Hilton, C. A. Griffin, C. M. Harrell, J. T. Johns, Oswald Palmer, Mrs. L. D. Newland, Mrs. O. B. Taylor, Mrs. Mae Moore, Mrs. H. B. Brown, G. M. Stephens, Mrs. G. M. Stephens, Mrs. C. O. Hale, Mrs. F. O. Strickland, Mrs. W. H. Hull, Della Mae Hull, Mrs. Worth Hull, W. O. Rains, Mrs. Sara Fleming, Mrs. E. Suggs, Mrs. W. T. Smith, Mrs. J. D. McInnis.

(This list is incomplete.)

PROCEEDINGS
of the
SIXTY-SEVENTH ANNUAL SESSION
of the
SUWANNEE BAPTIST ASSOCIATION
Held with
O'BRIEN BAPTIST CHURCH
O'Brien, Florida

FIRST DAY

THURSDAY, OCTOBER 13th, 1938, 10:00 A. M.

1. The Suwannee Baptist Association met in its Sixty-Seventh Annual Session with the O'Brien Baptist Church, O'Brien, Florida, Thursday, October 13, 1938. Promptly at 10:00 A. M. the Moderator, the Rev. H. O. Hughes, called the meeting to order. The Association was opened by singing that good old hymn "How Firm A Foundation."
2. Rev. T. W. Allen led in prayer, after which the congregation sang "Jesus Keep Me Near the Cross."
3. Rev. W. H. Gray led the devotional service by reading the 37th Psalm. Following the reading by a very interesting talk.
4. Rev. H. O. Hughes made an oral report of the work of our association, and also outlined work that we can and should do.
5. Rev. John E. Evans made a motion that all messengers present and those to come later compose this session of the association.
6. The next order of business was the election of officers for the ensuing year. Motion made by Rev. H. O. Hughes and carried that Rev. W. T. Newsome be elected as moderator which was by acclamation. Motion made by Dr. John E. Evans and carried that E. T. Horne be elected Vice Moderator. Motion made by Rev. W. C. Taylor and carried that G. L. Dorman be reelected Clerk. R. E. Hatch was reelected Treasurer. All the above officers were elected by acclamation.
7. The order of business as submitted by the committee was adopted.
8. Address of welcome was delivered by Rev. A. H. Townsend, pastor for the O'Brien Church, cordially welcoming all to this church and community.
9. Visitors were welcomed and enrolled (See list following list of messengers 1938 session).
10. Report of Executive Committee read by S. C. Kierce, as follows:

REPORT OF EXECUTIVE COMMITTEE

Our Executive Committee is and should be one of the most important Committees which we have. The members should have a keen vision for the upbuilding of our Christian ideals and conditions. It should sponsor and promulgate activities which will enhance the Christian activities in each Church and the Association.

One should not accept a seat on this Committee unless he intends to work toward the planning and the completion of the plans advocated by the Committee and Association.

For the past several years, we have had excellent cooperation from the Committee members. This is appreciated. This year we have assisted in solving several problems which have come to our attention.

Ministerial relief has been sought for some of our worthy brothers.

Our car of produce was assembled and shipped to the Florida Baptist Children's Home. Brother T. M. Johns, Superintendent, wrote several letters of thanks for this produce.

The Annual Bible Conference was held at the Live Oak Baptist Church. This has been excellent in bringing about a closer fellowship and cooperation among the Churches and pastors.

Respectfully submitted,
S. C. KIERCE,
Chm. Ex. Com.

Report adopted.

11. The following committees were appointed by the Moderator to report at this session of the Association.

CO-OPERATIVE PROGRAM

A. B. Franklin, Chairman; J. Q. Boatright, B. M. Smith.

STATE MISSIONS

H. J. Horne, Chairman; E. S. Palmer, J. H. Goff.

HOME MISSIONS

A. O. Dorsett, Chairman; W. J. Starling, Harry T. Reid.

FOREIGN MISSIONS

Mrs. T. J. Fletcher, Chairman; Miss Carmine Toole; Mrs. T. J. Clements.

WOMAN'S MISSIONARY WORK

Mrs. John E. Evans, Chairman; Mrs. A. O. Dorsett, Mrs. J. T. McDaniel.

HUNDRED THOUSAND CLUB

Mrs. Geo. Hymn, Chairman; C. A. Landen, Mrs. Roy Knight.

FINANCE COMMITTEE

R. E. Hatch, Chairman; D. J. Mills, T. J. Fletcher, J. M. N. Clark.

CHRISTIAN EDUCATION

Rev. W. C. Taylor, Chairman; E. T. Horne, H. V. Johns.

FLORIDA BAPTIST CHILDREN'S HOME

Mrs. W. B. Lewis, Chairman; H. B. Brown, G. M. Stephens.

RELIGIOUS LITERATURE

Rev. A. M. Parker, Chairman; N. R. Hines, C. L. Jenkins.

SUNDAY SCHOOL

S. C. Kierce, Chairman; R. E. Hatch, E. W. Bozeman.

BAPTIST TRAINING UNIONS

W. M. Hogans, Chairman; C. R. Smith, W. M. Hunter.

BROTHERHOOD WORK

R. W. Henry, Chairman; A. O. Dorsett, H. L. Prevatt.

MINISTERIAL RELIEF AND ANNUITY

D. J. Mills, Chairman; S. C. Kierce, H. O. Hughes.

SOCIAL SERVICE

Rev. H. O. Hughes, Chairman; W. T. Newsome, Sam Hilton.

STATE OF RELIGION

Rev. W. H. Gray, Chairman; Mrs. F. D. Phillips, Omer H. Ward.

NOMINATIONS

Rev. H. O. Hughes, Chairman; W. M. Hogan, Mrs. W. T. Newsome.

RESOLUTIONS

Dr. John E. Evans, Chairman; R. H. Holden, Mrs. Meta Cameron.

OBITUARIES

R. J. Bush, Chairman; J. M. Kite, T. J. Ellis.

DIGEST OF LETTERS

Rev. A. H. Townsend, Chairman; Mrs. E. C. Gornto, D. S. McLeod.

12. The Moderator announces that the hour has arrived for the Introductory Sermon. After singing Rev. A. M. Parker of Mayo, brings the message of the hour, the text being Ephesians 6th chapter, 10th and 11th verses.

Adjourned for lunch.

THURSDAY AFTERNOON 1:30 P. M.

13. After singing a song "Showers of Blessings" the Association was called to order by the Moderator. Rev. W. T. Allen led the devotional service by reading the 23 Psalm. Rev. H. H. Link led in prayer.

14. Report on Co-operative Program was read by Rev. A. B. Franklin as follows.

REPORT ON COOPERATIVE PROGRAM

The Cooperative Program is a plan adopted by Southern Baptists in their effort to enlist all their people in systematic giving to support our great work.

The Cooperative Program includes the many different ways in which we as the greatest denomination are striving to carry out the command of our Lord.

Being divided to meet the needs of our great work, in carrying the gospel to all the world.

It is urged that all pastors and denominational workers insist on systematic giving through the Cooperative Program that our state secretary, C. M. Brittain, can send to each of the many needs the portion allotted to that need as divided by the Cooperative Program.

May it be assumed that every member of this denomination can give through the program with the assurance that fair play will be given to its distribution.

And may the God of our salvation lay on the hearts of each of us to support the Cooperative Program to that end.

That the great commission of our Lord will be accomplished through our loyalty to the Cooperative Program.

Submitted by

A. B. FRANKLIN, Chairman,
B. M. SMITH,
JOHN Q. BOATRIGHT.

15. Report on State Missions read by H. J. Horne, as follows:

REPORT ON STATE MISSIONS

No state in the Union offers a greater challenge for mission work than Florida. With few exceptions, we have the most cosmopolitan population. About 65 per cent of our million and a half people are unaffiliated with any church group. There are about 500,000 white persons in Florida, 10 years old and up, who are unsaved. What a mighty evangelistic challenge we face and what a great responsibility rests upon Baptists, who are the largest denomination in the state!

Our Convention, through its State Mission Board, has assisted in one way or another more than 500 of our nearly 800 churches, and many of these were organized by missionaries of the Board. Our missionaries have gone into the destitute places with the Gospel message and have helped to win and hold our state for Christ as against those who seek to exploit our natural beauties and God-given resources for ungodly purposes.

Our State Mission work includes the following departments: Sunday School, Woman's Missionary Union, Baptist Training Union, Baptist Brotherhood, Evangelism, Student Work, Publicity (through Baptist Witness, tracts and other publications), Missionary Pastors, Administration, Finance and Accounts. The State Mission budget for the present year is \$74,115.00, which is the largest and most comprehensive program the denomination has undertaken since the depression began.

The sources of our income are as follows: Strictly promotional departments, including Administration, W. M. U., Brotherhood, Baptist Witness, draw their support from Cooperative Program funds before they are divided, since these departments represent and promote every phase of the Cooperative Program. This is done under an arrangement with the Southern Baptist Convention and the same arrangement obtains in other states.

The State Mission Fund then gets 80 per cent of Program funds after division.

The Sunday School Board of Nashville, Tennessee, makes a gift of \$6,500.00 a year to the work in Florida, to help maintain the Sunday School, Training Union and Student Work departments.

During October of each year, the W. M. U. Week of Prayer offering for State Missions and the special offering of the Sunday Schools on State Mission Day, both supplement our State Mission income and are a great help in overcoming the low receipts during the summer. Last year we received from these two sources alone \$6,603.32.

We have had 65 Missionary Pastors this year who have ministered to 79 churches and mission stations. We have supported three full-time evangelists and one other for about half the year. Glorious meetings have been held in scores of churches and hundreds of souls have been saved. We are looking forward to the great Southwide Evangelistic Campaign next year with joy and expectation.

Our State Mission Board reported an unusually fine year at the close of 1937, when it was shown by the Secretary that the gifts of Florida Baptists to all missionary and benevolent causes for that year reached a grand total of \$198,646.72, and of that amount, \$104,355.98 was given for the Cooperative Program, and 7,655 people were baptized into the fellowship of our churches.

We recommend, 1. That we appeal to each church to increase its gifts to the Cooperative Program, and send in all mission funds at least at the close of each month. Full-time churches are requested to send in their funds **each week**.

2. We urge the use of the Every Member Canvass as a successful means for enlisting church members and securing a larger support for the church and denomination.

3. That the Executive Committee continue their efforts for evangelism in the Association and in the interest of the Statewide evangelistic campaign.

4. That more prayer and effort be made for winning the lost; that an evangelistic meeting be urged for every church; that evangelistic preaching be promoted over the radio, in tents, under arbors, in school buildings, and in every advantageous way in unchurched communities; that emphasis be placed on development of personal soul-winners; that stress be given to establishing family altars; that there be an adequate program of conservation of the results of evangelism through enlistment, training, indoctrination and stewardship.

Respectfully submitted,

H. J. HORNE, Chairman.
E. S. PALMER.

16. Report on Home Missions read by A. O. Dorsett, as follows:

REPORT ON HOME MISSIONS

We your committee on Home Missions wish to report as follows:

Listed below is what the members of the Suwannee Baptist Association have contributed to Home Missions. \$250.00.

We feel this amount is far too small taking into consideration the financial condition which exists in the territory by our association.

We recommend that this association get a goal to work to during the coming years.

There are of course other sources from which we receive funds. Which if it were not for these our own Home Mission work would be lacking. Below we mention some of these other sources.

THE BOTTOMS TRUST

It is impossible to tell the full story of the benefit rendered to Home Missions by the Bottoms Trust. In addition to the actual work done, there has been a pick-up, a revitalized animation, a thrilling, soul-inspiring enthusiasm given that can never be put into figures. All along the Rio Grande in Texas, up into New Mexico, throughout French Louisiana, and over the entire field in Cuba there has gone a spiritual wave of hope, joy and determination to carry on, created by the Bottoms Trust, that has given new life to our work. No one among Southern Baptists has done more for the progress of the kingdom in the homeland and abroad than Mrs. Ida M. Bottoms, of Texarkana, Ark.

ANNIE W. ARMSTRONG OFFERING

From year to year Woman's Missionary Union has shown increasing interest in Home Missions. Their prayers have encircled the millions of lost souls in the homeland and Cuba. Their gifts have maintained hundreds of missionaries in the field.

Year by year the gifts have increased. In 1936 the Union gave \$113,981.15. In 1937 the offering reached the glorious sum of \$130,904.86.

PROGRESS IN FINANCES

Continued progress, both in increased receipts and in payments on the debt is plainly seen in the financial report. The Board received from all sources in 1937, \$508,454.67, an increase of \$64,999.40 or 14.6 per cent. The treasurer's report shows that \$145,560.37 was paid on the principal of the debt in 1937. This is the largest amount paid in any year since 1929.

The Board is strictly adhering to a cash basis in all its operations. This is the fifth year the Board has operated without borrowing for current work. The Board has operated within its budget.

SOUTHERN BAPTIST HOME MISSIONS

We would commend to our people Southern Baptist Home Missions, monthly publication of the Home Mission Board, as the most authentic source of full

information on home mission work, needs and trends today. This fast-growing magazine which has had an increase of nearly 2,000 subscribers a month since it became a monthly publication with the January, 1938, issue can be had for only twenty-five cents a year.

Respectfully submitted,

A. O. DORSETT, Chairman,
W. J. STARLING,
HARRY T. REID.

17. Report on Foreign Missions read by Mrs. T. J. Fletcher, as follows:

REPORT ON FOREIGN MISSIONS

Foreign missionaries background.

I. IS JESUS.

In the providence of God, Jesus made his first contact with the world at Bethlehem, consummated in his suffering, death and resurrection, over which the Jews stumbled, were blinded and broken off because of unbelief. God's indictment (Jer. 30:7) hangs over them as they rejected his first foreign missionary. This missionary brought God to this world to reconcile, salvage, save lost humanity.

He came with a world Program. Vision, Passion.

His Program. He called about him twelve men and launched this program of preaching, Baptising, Teaching, Commissioning. And informed them that the whole world is your parrish.

His vision. This program will stand through the ages. Hell shall not conquer it, Death shall not conquer it. For I will be with it till the end of the age.

THE PASSION OF THIS PROGRAM:

1. He gave himself, to the end men may be saved.
2. He assured those that believe not to be condemned.
3. He assured those that believed that they had passed from under the wrath of God into everlasting life.

II. BACKGROUND IS THE HOLY SPIRIT.

As recorded in the Acts of the Apostles, He immediately contacted all people in the world from a racial standpoint and set his approval on worldwide Missions.

In the 8th chapter of Acts Ham's descendents, the colored people of the earth, were contacted through the person of the Ethiopian.

In the 9th chapter of Acts Shem's descendents, the Jews, were contacted in the person of Saul of Tarsus.

And in the 10th chapter of the Acts of the Apostles Jepheth's descendents, the Gentiles, were contacted through the person of Cornelius.

So the Holy Ghost set going worldwide missions.

III. BACKGROUND OF FOREIGN MISSIONS.

Is the New Testament Church—in three stages.

1. In the Jerusalem dispersion they went everywhere preaching the word.
2. Foreign missions gained international prominence under the leadership of men like Judson, Rice, Whitfield. Thus our Lord and the Holy Spirit through the consecration of men began what seems now to be the last worldwide Missionary movement preceding our Lord's return.
3. Our part in this worldwide missions. The Southern Baptist Convention with slightly over 83 years of service to its credit, with a small beginning on

the 8th of May, 1845. Until now we have substantially planted this foreign mission program in five continents of the earth and in obedience to our Lord and emulating the Holy Spirit we are now preaching the blessed Gospel of our Lord and Saviour Jesus Christ, to the Jew, Gentile and the Negro. Wherefore we your committee plead with our association to sacrificially join hands with our state and Southern Baptist Convention through the Cooperative Program to give the gospel to the peoples of the earth.

Respectfully submitted,

MRS. T. J. FLETCHER, Chairman,
MRS. T. J. CLEMENTS.

18. Report of W. M. U. was read by Mrs. John E. Evans. See report under W. M. U. section of the minutes.

19. Report on Hundred Thousand Club read by Clerk, as follows:

REPORT ON HUNDRED THOUSAND CLUB

The Baptist Hundred Thousand Club is still going well. Slowly but surely the debts of the Southern Baptist Convention agencies are being paid. If we had the full one hundred thousand members each paying his dollar every month we would soon have a debtless denomination.

WHAT THE CLUB HAS DONE

Up to May 1, 1938 the sum of \$843,051.17 had been received in the Nashville office from this Club and every penny of it has been paid upon the principal of the debts of the southwide agencies. (\$51,925.20 came from Florida.)

The southwide agencies have received (May 1, 1938) the following amounts from the Baptist Hundred Thousand Club: Foreign Mission Board, \$215,312.73; Home Mission Board, \$204,650.09; National Baptist Memorial, \$7,855.83; New Orleans Hospital, \$16,206.97; Education Board, \$42,190.22; Southern Baptist Theological Seminary, \$142,818.73; Southwestern Baptist Theological Seminary, \$128,536.92; Baptist Bible Institute, \$84,229.94; American Baptist Theological Seminary, \$1,249.74; Total \$843,051.17.

The receipts from the Florida Baptist Hundred Thousand Club are distributed as follows: Florida Baptist debts, 50 per cent; Southern Convention debts, 50 per cent.

The Baptist Hundred Thousand Club has done more than pay nearly a million dollars upon denominational debts. (1) It has stopped over \$50,000 in annual interest; this would pay the salaries of some sixty-five foreign missionaries. (2) It has strengthened the morale of our people. They are singing the songs of victory now instead of a dirge of despair. "We are getting out of debt and we are going to keep out of debt." (3) It has reestablished our credit. Before this Club was started some of our paper was selling for twenty cents on the dollar, now it brings 100 cents. Our creditors are saying: "You can trust Southern Baptists, they will pay their debts." (4) It has encouraged all our agencies, helped all our causes and led in reducing our southwide debts from six million dollars to less than three and one half \$3,465,274.06 as of May 1, 1938.)

This Club deserves the hearty support of all our people. We want our state and all our associations and churches to have a part in this good work.

RECOMMENDATIONS

1. That this association give its hearty endorsement to the Florida Baptist Hundred Thousand Club.
2. That every pastor and church be urged to put on the Baptist Hundred Thousand Club.
3. That every church adopt a Baptist Hundred Thousand Club membership goal.

4. That a special committee be appointed in each church with the chairman as club leader for the year.
5. That effort be made to secure as many individual memberships as possible and that group memberships be secured subsequently.
6. That accurate records be kept and prompt remittance be made monthly to the state secretary properly designated to the Baptist Hundred Thousand Club.
7. That the Club be kept constantly before the people and that new memberships be secured from time to time and that unceasing prayer and effort be made looking to a Debtless Denomination by 1945.

Respectfully submitted,

MRS. GEO. HYMAN, Chairman,
C. A. LANDEN,
MRS. ROY KNIGHT.

20. The above reports were spoken on by H. J. Horne, Mrs. John E. Evans, A. O. Dorsett, C. M. Brittan and others.

All the above reports adopted.

21. A motion was made and carried that we add to our Ministers conference to be held in Live Oak next February, a Deacons class for study.

22. Moved and carried that we adjourn until 9:30 tomorrow.

SECOND DAY

FRIDAY, OCTOBER 14th, 9:30 A. M.

23. The Association was called to order by the Moderator. After singing a hymn, Rev. H. O. Hughes led in prayer. Rev. A. B. Franklin led the morning devotional services by reading a portion of God's word after which Rev. W. H. Gray led in prayer.

24. Minutes of yesterday were read and approved.

25. Report on Religious Literature was read by Rev. A. M. Parker, as follows:

REPORT ON RELIGIOUS LITERATURE

This is a day of special preparation, and the major part of the material comes from the printed page, this being true we need to be very careful in the selection of our literature. The devil is using the press to carry his work to success, and he is making progress at airplane speed, therefore it is high time that the Churches of the Suwannee Association were waking up to their duties and responsibilities in using the printed page to defeat the devil and his propaganda.

Our Baptist book store at Jacksonville, Fla., and the Sunday School Board at Nashville, Tenn., are equipped to furnish them with good books, magazines, pamphlets and Bibles for each department of work to counteract the floodtide of Communism, Fascism, Nazism, Agnostism and all other isms contrary to the teachings of the Bible.

We also heartily recommend to our churches the Florida Baptist Witness, it is the Acts of the Apostles of the State of Florida, it brings to us each week inspiration and information, read it and pass it on to others.

The last but not the least the Holy Bible the Inspired word of God, should have the first place in all our lives, as Jesus commanded His disciples to search the scriptures for in them ye think ye have eternal life and they are they which testify of me. John 5:39. Paul said to Timothy, Till I come, give heed to reading, exhortation, to teaching. 1 Tim. 4:13.

Respectfully submitted,

REV. A. M. PARKER, Chairman
C. L. JENKINS,
N. R. HINES.

26. Report on Baptist Children's Home read by the Clerk, as follows:

REPORT ON CHILDREN'S HOME

Our Home represents one of our most singular pieces of work. It receives and takes care of the children of our departed brethren, and makes it possible for them to have an opportunity to grow into useful, Christian, manhood and womanhood.

The children admitted to our Home are taught to work. They learn to accept responsibility and to do their part toward their support. A farm, dairy herd, and grove pay dividends toward their keep. It is the practice of the management to teach our children to be self-supporting. They are taught eleven vocations on the campus, and to these are added agriculture, typing, shorthand, bookkeeping, and domestic science in the local high school.

All repairs except those requiring the services of a skilled mechanic are done by the children; repairs to buildings, painting, roofing, and all labor pertaining to the general upkeep of the Home is done by the boys. The girls do the cooking, laundry work, and other chores pertaining to general housework. They do not spend money for labor when the work can be done by the children.

The educational and religious training of the children are two important factors in the work of the Home. The children are sent to the city schools. This gives them the advantage of outside contacts, and us, assurance that they will receive as good instruction as the county provides.

The scripture is read daily in the dining room. Each Friday night chapel is held for everyone in the Home. This is a time given to discussion of principles of character building, and the religious problems of our children. They attend preaching, Sunday school, and B. T. U. services at the First Baptist Church of Arcadia. More than ninety per cent of our children over the age of ten are members of a Baptist church.

The success of a work with children can be measured only in a limited way by the visible results. The real success is too often hidden from our observations; and yet, the results of training and work among our children have produced enough visible results to be most gratifying. They have shown that they can be successful as teachers, as nurses, as beauticians, as printers, as secretaries, and as workers in a number of other fields. Those who have accomplished those things did so only with our help. They, and we, are to be congratulated on their success, but as we think of those, and the others who are in the Home, who are receiving our help; we think of the hundred or more who have applied to us for help and had to be denied. Many of these are deserving cases, and need our assistance, but so long as only nineteen per cent of our Sunday schools make an offering each month toward their support, and only thirty-two per cent of those not giving each month send an offering during the year, and so long as forty-nine per cent do not give anything toward the help of our children, they will have to be left where they are.

It would be such a blessing to our children if it were possible to enroll a few more of our Sunday schools. This would enable them to increase their number, which is now one hundred fifty-two, without building any additional dormitories or having to meet any heavy expense by reason of the increase. They have the facilities for caring for one hundred seventy-five children on the campus.

Let us lend our support to this most worthy cause remembering the Master said, "Whosoever shall receive one of such children in my name, receiveth me; and whosoever shall receive me, receiveth not me, but him that sent me."

Respectfully submitted,

MRS. W. B. LEWIS, Chairman,
G. M. STEPHENS.

27. Report on Christian Education read by the Clerk, as follows:

REPORT ON CHRISTIAN EDUCATION

The History of Education in the United States reveals the fact that the first great colleges and universities were Christian schools, fostered by different denominational groups. From the beginning of their organized work in Associations, State and Southwide Conventions, Baptists have been interested in distinctively Christian Education.

According to the Minutes of the Florida Baptist Convention for 1937, Southern Baptists have in the Southland four Theological schools, with over 1200 students enrolled; twenty-nine Senior Colleges and Universities, with over 17,000 students; twenty-one Junior Colleges with over 5500 students; and fifteen Academies with nearly 2,000 students.

In our own State the program for higher education for Florida Baptists centers in Stetson University, a Baptist Institution. There, Baptists seem to have a safe and sound Christian school, in a Christian environment, under Christian teachers, where life can be defined and interpreted in the light of the truth revealed in the Bible, and through the Christ of the Bible. From such an institution we may expect many of our leaders for our Baptist churches.

As preparatory and foundational to the Christian school, there must be Christian teaching and training in the home, and in the teaching activities of the churches. Only thus can we hope to stem the adverse currents of confusion, of secularism, and of skepticism that are sweeping so many young people away from their moorings, away from the fundamentals and certainties of the "Faith of Our Fathers."

Only thus, as we give emphasis to these vital concerns, can we counteract the down-grade tendency in moral standards; and help to equip and fortify students to meet the call and challenge of this age, in the Spirit and Strength of Christ. Knowledge gained in secular education and in secular pursuits must be re-inforced by that "wisdom that cometh down from above," imparted in distinctively Christian teaching and by unquestioned Christian teachers.

And since Baptists are endeavoring to meet the demands for Christian Education in the home, in the church, and in the school, we believe in Christian Education as interpreted by the Baptist tradition and by the Baptist Faith.

Respectfully submitted by your Committee,
W. C. TAYLOR, Chairman.

28. Report on Sunday School read by S. C. Kierce, as follows:

REPORT ON SUNDAY SCHOOLS

This Committee reports as follows:

The Sunday School is the most important organ of the Church. If it fails to function, the vital parts are dormant.

Sunday School is the teaching part of the Church. In this department, both young and old are taught the teachings of our Lord and the scriptures given by his inspired servants.

Observation has shown that where the young people are regular attendants at Sunday School, these are the people who later make the officers and teachers of our Sunday Schools. Also, those who attend Sunday School in the rural districts invariably make good teachers and officers in City Churches or their home Churches, if they continue to make that home.

In our Association, we have 32 Churches, 16 reported Sunday Schools in 1937, with an enrollment of 1323. We have been just holding our own, but will begin to soon lose more members than we add, if we are not alert and on the job.

The largest percent of our Church members are secured from our Sunday Schools. As they learn the Bible, they learn to love our Master and live as his commandments direct. A good example of how the Church grows from its Sunday School activities is that of the Live Oak Baptist Church this past year.

There were between 90 and 100 additions to the Church; of these, 38 were by Baptism; of the 38, there were 35 from the Sunday School Department of the Church. Oh, how we need Sunday Schools in every Church in the Association!

We are glad to note that during the present church year, several Sunday Schools have been organized and are growing rapidly. Let's do more of this work.

We recommend that a Study Course be held in each Sunday School by a competent teacher. All that is required is the teachers and officers asking some layman or student to do the work and attend each meeting.

Our aim is the same one recommended by the Committee for 1937. It is as follows: 1st. To Organize Sunday Schools wherever we have an opportunity. 2nd. Help in every way to win to Christ and enlist people in service. 3rd. Make our hearts sure that we teach the Bible sincerely. 4th. Be sure to promote evangelism in every meeting. 5th. Do all we can to build up the weak churches. 6th. Obey Christ's command where he said "Go ye into all the world and preach the gospel to every nation, and teach them to observe all things whatsoever he has commanded you."

Respectfully submitted,

S. C. KIERCE, Chairman,
R. E. HATCH,
E. B. BOZEMAN.

29. Report on B. T. U. was read by the Clerk, as follows:

REPORT OF BAPTIST TRAINING UNIONS

We, your committee on Baptist Training Unions are discouraged to see that only eight churches in the association reported active unions in them, with a total enrollment of 240 members reported. Every active church should have a Union for the purpose of training their young converts into strong well rounded Christians to go out as leaders and lovers of God's Kingdom Work, with the breastplate of righteousness.

The Union trains workers to work, to pray, to give, to send.

We your committee feel a very urgent need of a strong Union in every church possible in our association.

Respectfully submitted,

W. M. HOGANS, Chairman,
C. R. SMITH,
W. M. HUNTER.

30. Above reports were spoken on by Rev. A. M. Parker, Dr. John E. Evans. Dr. Evans was representing the Florida Baptist Witness and made a strong plea for every Baptist to read our State Paper.

31. Prof. T. M. Johns, Supt. of the Fla. Baptist Children's Home, made a very interesting talk telling us about the many things that happen in the Home, the needs of the home, and how every church can have a real interest in the home.

All the above reports adopted.

32. The hour for the Missionary Sermon having arrived Rev. W. C. Taylor of Jennings Baptist Church was given the time after singing "Standing On the Promises of God." He used as his subject "The Inestimable Must for Christ and for Christians."

Adjourned for lunch.

FRIDAY AFTERNNON 1:30 P. M.

33. The Association was called to order by the Moderator. After singing a hymn, Rev. A. M. Parker led in prayer. Rev. T. J. Ellis led the devotional by reading last three verses of Colossians I: 27 to 29; and making a very interesting talk on same.

34. Report on Ministerial Relief and Annuity read by S. C. Kierce, as follows:

REPORT ON MINISTERIAL RELIEF AND ANNUITY

When the Southern Baptist Board inaugurated the (old) Annuity Fund in 1919 it began a movement the purpose of which was to bring, in the course of time, every Southern Baptist minister and full-time lay denominational worker or employee into a contributory annuity plan that would insure these ministers and workers against despondency in old age. This great objective was never reached and will not be reached through this particular plan. This was clearly seen by the Board and the Convention in the years past, and in 1930 Convention authorization was given to close this fund to new members after September 30th, of the same year, and the fund was closed to new members on that date, but as will be seen later in this report by so doing the Convention and Board were not beating a retreat, but were planning to advance in the same direction toward the same objective or goal through another plan which in principle is now becoming effectual in its working under modified and changed forms. These modified plans, we believe, will bring us eventually to the realization of the objectives adopted by this Board in the early days of its operation.

OUR DEVELOPING WORK AND PRESENT-DAY TRENDS

(1) Under this head we do well to consider afresh the service which our Relief Department is already rendering and is planning to render to our aged and disabled ministers and widows, for surely we must not be unmindful of the needs of thousands of our preachers and widows who are already old, decrepit and sick, many of whom have not reached the age when they can get any Federal aid through the Social Security plan. Many of these denominational wards, present and prospective, are widows with children, and many of those who have reached the age when they can receive Government aid are not receiving the amount which is sufficient to sustain them, nor would it be proper for this Board to contentedly throw its beneficiaries upon the bosom of the Government.

THE SERVICE ANNUITY

(2) This Department has been closed to new members as of January 1, 1933. The reserves in the Department as of December 31, 1937, were \$63,420.09. These reserves are ample to enable the Board to meet the contractual provisions of the certificates that are in force, and certificate holders may continue their payments into this fund if they desire, however, it is the desire of the Board to transfer, as far as possible, all the members from this fund either to the Age Security Plan or to one of the other plans that may be better suited to the needs of the member.

AGE SECURITY PLAN

(3) This Age Security Plan is the Service Annuity in a modified form. The basis of contributions is 3 per cent of the salary paid by the minister and 3 per cent by the church. Last May we were able to report to the Convention that some forty churches in a dozen states had begun to participate in this plan with their ministers. Today we have one hundred and thirteen churches participating with their ministers. This does not mean one hundred and thirteen ministers participating because a few of the ministers have from two to four churches and two ministers have five churches all participating with them in the plan.

Respectfully submitted,

D. J. MILLS, Chairman,
S. C. KIERCE,
H. O. HUGHES.

Report adopted.

35. Report of committee on Social Service was read by H. O. Hughes, as follows:

SOCIAL SERVICE

In Psalms 94:20 we read: "Shall the throne of iniquity have fellowship with Thee, which frameth mischief by a law?"

In recent years we have suffered great reverses, in the realm of public morals, in which many of our old ideals have been cast into the discard, to the

hurt of many people, many of them innocent by-standers. And these defeats which have come to us, have been caused in many instances, by the indifference of the people, especially Christian people.

In our own State, as well as many others, the legalized traffic in intoxicating beverages, and the legalized gambling which occurs at the race tracks, has created conditions which should alarm every man and woman who loves righteousness.

Our Governments have framed mischief by a law, when for the sake of revenue, they would legalize those things, the history of which has shown to be demoralizing to all who engage in such practices. Men by laws may legalize that which is immoral and a sin before God; but they can never change the moral aspect of any issue by votes. Legal intoxicants, and legal gambling, will produce the same results in the people, that these things will do when illegal.

When we turn to the homes, we see many of them have been and are being hopelessly torn asunder, by many contributing forces, and finally parents find their way into the divorce courts as a solution to their problems. But so often they do not solve the problems of the home, but rather create more problems, especially if there are children, innocent by-standers, who always suffer the most, through the divorce courts. If the principles of Christianity were lived in our homes, the divorce courts would be dissolved.

Scattered throughout almost every town and community of any size in our country, is what is called a civic center, or a community center, or rather a club-house. Whatever may be claimed as the original motive for these places, one has but to observe the usage of them to see to what purpose they are being most used, and that is public dance-halls. The very architectural plans are evidence of this fact; and the practices and usages of these places, are indicative of their original purpose. We do not believe a dance-hall, public or private, and the modern dance, are conducive to a Godly, devoted, consecrated, Christian life; or that their influence is toward that which is high and holy and noble. And the most pathetic and tragic thing of all is, that a host of church-members constantly attend these places.

We deplore the attitude prevalent in our day toward the Christian Sabbath, or the Lord's Day; that it is used as a day of recreation and pleasure, and commercialized amusements, and for business, which is in no way necessary to the welfare of humanity. We believe the Divine order is one day in seven for rest and worship of God; and that a violation of the Fourth Commandment is just as sinful as the violation of any other. A proper observance of this day by all Christian people everywhere, would revolutionize our country; and bring about a great revival of religion, so much needed now.

Worldliness abounds in our churches. Worldliness in the churches is revealed in the acceptance of the standards of the world in conduct of life, rather than the ideals and principles enunciated by Christ. In many instances the standards of the world in reference to morals is accepted, rather than the ideals established by Jesus. Pride and selfish ambition are not the fruits of the Spirit, but rather products of the devil, brought forth in the lives of worldly-minded church members. "Come ye out from among them, and be ye separate, saith the Lord."

In approaching a solution for the problems created by present day evils, as they affect both public and private morals; let us remember that Christianity holds the solution for every problem that confronts a human being or a Church. Let us give ourselves first to prayer; for we can never conquer and overcome these evils in our own wisdom and strength. Then let us abstain from the practice of those things which do not lift us up, but rather cast us down. Let the ministers preach against all sin and all evil with all the power of their being; and let all Christian people work against these things. The promise of Christ is that "the gates of Hell shall not prevail against His Church."

Too long have we been on the defensive; ours is to be an aggressive campaign against all enemies and sins and evils of the souls of mankind. "Go in

this thy might, and thou shalt save Israel" was God's word to Gideon. And as we go forth, armed with the Sword of the Spirit, the Word of God, we too shall overcome, and put to silence and rest with our well-doing, the ignorance and evil of foolish men.

We affirm afresh our uncompromising stand against every thing which is sinful and evil and contrary to the Word of God, and that affects the welfare of the people. We affirm anew our allegiance to the Word of God as the all-sufficient rule and guide for faith and practice; and of our support of everything that will lift men and women and children to God.

Respectfully submitted,
H. O. HUGHES,
W. T. NEWSOME,
SAM HILTON.

Report adopted.

36. Report on State of Religion and Digest of Letters read by Rev. W. H. Gray, as follows:

REPORT OF DIGEST OF LETTERS—STATE OF RELIGION

Churches reported 1938 session 29; membership 3439.
Additions during the year 380; (221 baptisms).
Sunday Schools reported 22; enrollment 1534.
B. T. U.'s reported 13; enrollment 241.
Brotherhood reported 1; enrollment 79.
W. M. U. organizations reporting 20; enrollment 430; Gifts \$1,691.56.
Pastor's salary \$6,572.43. Mission Gifts \$2,787.80.
Co-Operative Gifts \$1,410.22. Local church expense \$10,578.59.
Grand total \$13,366.39. Church Property \$81,138.

Respectfully submitted,
W. H. GRAY, Chairman,
MRS. F. D. PHILLIPS,
OMER H. WARD.

Report adopted.

37. Report on Nominations read by Rev. H. O. Hughes, as follows:

REPORT ON NOMINATIONS

Time and Place for 1939 Session of the Association:
Time—Thursday and Friday, Oct. 12 and 13.

Place—Branford Church.

Preacher of Introductory Sermon—W. H. Gray.

Alternate—H. H. Link.

Preacher of Missionary Sermon—A. H. Townsend.

Alternate—A. B. Franklin.

Associational Member State Board of Missions of the Florida Baptist Convention—J. E. Evans.

Associational Messengers to the Florida Baptist Convention—R. E. Hatch.

S. C. Kierce, G. L. Dorman, W. M. Hunter.

Executive Committee—S. C. Kierce, J. M. N. Clark, H. V. Johns, E. T. Horne, A. O. Dorsett, W. M. Hunter, W. S. Ward.

Respectfully submitted,
H. O. HUGHES, Chairman,
A. O. DORSETT,
MRS. W. T. NEWSOME.

Report adopted.

38. Report on Obituaries read by Clerk, as follows:

REPORT ON OBITUARIES

We your Committee on obituaries wish to submit the following report.

During the year just closed we find that 29 of our fellow workers have answered the call of their Master and have passed to their reward. It is with

sad hearts that we record the passing of these loved ones. But we bow in humble submission to the will of our blessed Saviour for we know that He doeth all things well. Therefore, we recommend that a page of our Associational Minutes be dedicated to their memory.

Respectfully submitted,
R. J. BUSH, Chairman,
T. J. ELLIS,
J. M. KITE,

Report adopted.

39. After the above report was read a prayer was offered in honor of their lives by Rev. A. M. Parker.

40. Report on Resolutions read by Mrs. Meta Cameron, as follows:

RESOLUTIONS

Whereas God has blessed us with the gift of His Spirit during the Sixty-Seventh Annual Session of the Suwannee Missionary Baptist Association. And whereas the O'Brien Baptist Church has worthily entertained us, making our fellowship sweet, and nourishing our bodies,

And whereas our officers have served faithfully in guiding our deliberations. Therefore Be It Resolved that we give thanks to God for His blessing, a rising vote of appreciation to the O'Brien Church for their Hospitality, and our appreciation to our associational officers for their untiring efforts in making our association a success.

Respectfully submitted,
JOHN E. EVANS, Chairman,
R. H. HOLDEN,
META CAMERON.

41. Report adopted by a rising vote which was unanimous.

42. Motion made by Rev. H. O. Hughes and carried that Clerk be paid \$25.00 for his services.

43. Motion made by Dr. John E. Evans and carried that Clerk have picture made for use in this Association.

44. Report of Finance Committee read by D. J. Mills, as follows:

REPORT OF FINANCE COMMITTEE

We, your committee, beg to report that we have collected from the various churches of the Association the following amount: \$115.62, and same has been turned over to R. E. Hatch, Treasurer.

Respectfully submitted,
D. J. MILLS, Chairman,
T. J. FLETCHER,
J. M. N. CLARK,
Committee.

P. S. One dollar of this goes to Foreign Missions.

Report adopted.

45. Report of Treasurer read by R. E. Hatch, as follows:

TREASURER'S REPORT

Your treasurer begs to report as follows:

RECEIPTS	
Bal. on hand (Last year's report)	\$ 20.19
Col. from Churches for Associational Expenses	116.33
Col. from Churches for Pastors Conference	65.00
Col. (Provisions) for Children's Home	492.36

Total Receipts (1937-38) \$693.88

DISBURSEMENTS

Clerk's Salary	\$ 25.00
Postage on Letters to Churches	2.88
Suwannee Democrat (Printing Minutes)	106.25
Postage for Mailing Minutes	3.90
Provisions (Shipped Children's Home)	492.36
Paid Out for Pastors Conference	65.00

Total Expenditures \$695.88
 Deficit (Paid by our Clerk Bro. Dorman) 1.51

Respectfully Submitted,
 R. E. HATCH, Treasurer.

Report adopted.

46. An offering was taken for Associational expenses, which amounted to \$14.10.

47. Committee chairmen were appointed for next year. See list in Associational Directory.

48. Minutes of today read and approved.

49. Adjourned to meet with Branford Baptist Church at 10:00 o'clock A. M. Thursday, October 12th, 1939.

REV. W. T. NEWSOME, Moderator,
 G. L. DORMAN, Clerk.

ANNUAL REPORT OF WOMAN'S MISSIONARY UNION
 OF SUWANNEE ASSOCIATION, 1937-38

The Annual Meeting of the W. M. U. of Suwannee Association was held at New Hope Church, September 30, 1938, with the president, Mrs. J. E. Evans, presiding.

The meeting was opened by singing "Something for Thee." After the song Mrs. J. E. Evans led in prayer, asking that we might have a world peace. The devotional was given by Mrs. Kirby Sandlin and was taken from II Peter 1: 1-8. After which Miss Louise Smith led in prayer.

Miss Loveta Smith extended a most cordial welcome to the visitors which was responded to by Mrs. J. E. Evans of Live Oak.

The following committees were appointed:

Obituaries	Mrs. W. H. Green, Jasper.
Resolutions	Mrs. H. C. Overstreet.

The Secretary's report was read as follows:

Total No. Societies in this Association	9
Total No. Members in this Association	282
Total No. Subscribers to Royal Service	45
Total No. Subscribers to Other Missionary Periodicals	6
Total No. Subscribers to Baptist Witness	48
Total No. Boxes sent (Children's Home-Missionaries-Training School and Aged Ministers)	9
Total Value of boxes	\$ 46.93
Contributed to White Cross Hospital in China	10.69
Contributed to Hundred Thousand Club	142.00
Contributed to Cooperative Program	298.95
Contributed to Local Church	235.86
Contributed to Golden Jubilee	106.83
Contributed to Other Objects	111.85

Total Gifts for all purposes \$953.11

The Treasurer's report was read. She reported \$1.25 on hand.

The report of the Young People's Leader, Mrs. Ed Herndon was now read.

The following outstanding visitors were recognized:

Mrs. W. C. Tyler, Recording Secretary of the general W. M. S.

Miss Louise Smith, Jacksonville, State Secretary of W. M. S.

Mrs. W. M. Vines, Quincy, Past president of the Tallahassee Division.

Mrs. Jeff Davis, Quincy, President of Tallahassee Division.

The address of our Association President was then given. Her subject being, "The Fruit by which we are Known."

A hymn, "Trust and Prove Me," was sung.

Mrs. W. B. Lewis of Jasper, Associational Golden Jubilee Chairman, spoke to us on "Bringing Forth Much Fruit."

An address was made by Mrs. Tyler. Her subject being "Guard Well That Which He Hath Committed To Us."

We were now dismissed by prayer by Mrs. J. E. Evans.

After lunch, our meeting opened by singing a hymn, "Marching to Zion."

A discussion of our problems was led by Mrs. Jeff Davis, our Division President.

Devotional was given by Mrs. J. E. Evans—Hebrews 12: 1-28.

Reports from the following committees were read and adopted:

Superintendent of Hamilton Co.

Training School

Stewardship

Publicity

White Cross

Mission Study

Mrs. Greer

Mrs. W. L. Tedder

Mrs. J. G. Brim

Mrs. J. L. McDaniel

Mrs. W. M. McLeod

Mrs. J. A. Scaff

The president expressed the hope that during the coming year quarterly meetings will be held in each county.

Mrs. W. M. Vines of Quincy, our later Division President, made a short talk.

An address "Suggestions from the Head Gardner" was made by Miss Louise Smith, State W. M. U. Secretary.

A collection was taken. The amount was \$6.20.

The minutes of the last meeting were read and adopted

The obituary committee reported the death of Mrs. Barney Cheshire of Jasper.

The report of the Resolutions Committee was heard.

The report of the Nominating Committee was read as follows:

President	Mrs. J. L. McDaniel, Jennings
Vice-President	Mrs. Kirby Sandlin, Jasper
Sec. & Treas.	Mrs. Ed. Herndon, Jasper
Sup. Suwannee	Mrs. Phil Goff, Live Oak
Sup. Hamilton	Mrs. J. H. Corbett, Jasper
Personal Service Chmn.	Mrs. W. B. Lewis, Jasper
Margaret Fund	Mrs. Q. W. McCall, Jennings
Training School	Mrs. T. J. Blanchard, Live Oak
Stewardship	Mrs. T. J. Fletcher, O'Brien
Publicity	Mrs. J. E. Bland, Jasper
White Cross	Mrs. W. M. McLeod, Live Oak
Mission Study	Mrs. G. C. Bryant, Live Oak
Young People Chairman	Mrs. W. A. Hunter, Live Oak
Mem. Children's Home Assoc.	Mrs. J. E. Evans, Live Oak
Members at Large	Mrs. C. E. Lawrence, Falmouth
	Mrs. George Carver, Banford
Hundred Thousand Club	Mrs. B. G. Bell, Falmouth

The new officers for the coming year were installed by Mrs. Tyler.

The place of our next meeting is to be selected by executive committee and time to be set by Miss Louise Smith.

There being no further business, the meeting was adjourned.

MRS. J. E. EVANS,

MRS. J. L. McDANIEL,

MRS. A. O. DORSETT.

MEMORIAL PAGE

This page is dedicated to the memory of our comrades who have answered the last roll call since October 1st, 1937.

ANTIOCH:

Mr. Lee Tannyhill

BEULAH:

Deacon W. D. Stinson

BRIGHT POND:

Mrs. L. P. Geiger

CLAYLAND:

Deacon W. N. McLeod
Mrs. Isabelle Mills

FRIENDSHIP

SUWANNEE:

Mr. Clarence Brannan
Deacon W. A. Rye
Mrs. Annie Warren

JASPER:

Mrs. B. Cheshier

LIVE OAK:

Mrs. Eliza Holloman

MARY BELLE:

Deacon B. F. Carroll
Mrs. B. F. Carroll

MT. GILEAD:

Mrs. Dora Ann Dean

MT. OLIVE:

Mrs. Addie Zipperer

NEW HOPE:

Mr. D. A. Dempsey

O'BRIEN:

Mr. J. A. Baker
Mr. A. R. Curl

ORANGE:

Mr. Bill Johnson
Mrs. Mary Robinson

PHILADELPHIA:

Deacon J. O. Boatright
Mrs. Ruth Cowart

PLEASANT HILL:

Mr. W. M. Jenkins

ROCKY SINK:

Deacon J. C. Crawley

ROSEMARY:

Deacon J. S. Alderman

SHADY GROVE:

Mr. Gerald Hewiet

SUWANNEE:

Mr. A. S. Phillips

TIGER LAKE:

Mr. H. P. Hastings
Mrs. H. P. Hastings

UNION:

Mrs. J. W. Kerby

CHURCH DIRECTORY

ORDAINED MINISTERS HOLDING MEMBERSHIP IN THE CHURCHES OF THE SUWANNEE BAPTIST ASSOCIATION

Name and Address	Church of Which Member	Ministerial Work
Ellis, T. J., Live Oak, Fla.	Mt. Olive	Pastor
Evans, A. K., Live Oak, Fla.	Antioch	Member
Evans, John E., Live Oak, Fla.	Live Oak	Pastor
Floyd, E. O., Live Oak, Fla.	Clayland	Member
Franklin, A. B., Live Oak, Fla.	Pleasant Hill	Pastor
Griffin, Jr., C. A., Falmouth, Fla.	Mt. Gilead	Stu.-Minister
Henry, R. W., Dowling Park, Fla.	Beulah	Pastor
Holcomb, E. H., Live Oak, Fla.	Live Oak	Pastor
Holmes, W. H., O'Brien, Fla.	Union	Member
Hughes, H. O., Jasper, Fla.	Jasper	Pastor
Johnson, E. D., Lee, Fla.	Corinth	Pastor
Lowe, Dewey, Live Oak, Fla.	Suwannee	Member
McInnis, W. D., O'Brien, Fla.	O'Brien	Member
Newsome, W. T., Live Oak, Fla.	Live Oak	Pastor
Parker, J. S., Live Oak, Fla.	Rocky Sink	Member
Platt, G. H., Live Oak, Fla.	Orange	Pastor
Platt, J. J., Live Oak, Fla.	Clayland	Member
Taylor, W. C., Jennings, Fla.	Jennings	Pastor
Ward, S. G., Live Oak, Fla.	Pine Level	Pastor
Wheeler, D. M., Jasper, Fla.	Divonia	Pastor
Wise, E. R., Live Oak, Fla.	Antioch	Member

MINISTER ORDAINED THIS YEAR

Name and Address	Church of Which Member	Ministerial Work
Ellis, T. J., Live Oak, Fla.	Mt. Olive	Pastor

WE HAVE NO ASSISTANT PASTORS OR EDUCATIONAL DIRECTORS WITHIN THE BOUNDS OF THE SUWANNEE BAPTIST ASSOCIATION.

PASTORS

No.	Church	Name and Address
1	Antioch	C. L. Clemons, Lake City, Fla.
2	Belleville	No. Report.
3	Bethel	No. Report.
4	Beulah	W. H. Gray, Live Oak, Fla.
5	Branford	H. H. Link, Orlando, Fla.
6	Bright Pond	A. B. Franklin, Live Oak, Fla.
7	Clayland	W. H. Gray, Live Oak, Fla.
8	Corinth	A. H. Townsend, Perry, Fla.
9	Divonia	D. M. Wheeler, Jasper, Fla.
10	Friendship, Hamilton	W. N. Cone, Lake City, Fla.
11	Friendship, Suwannee	T. J. Ellis, Live Oak, Fla.
12	Jasper	H. O. Hughes, Jasper, Fla.
13	Jenning	W. T. Newsome, Live Oak, Fla.
14	Live Oak	John E. Evans, Live Oak, Fla.

15	Mary Belle	E. H. Holcomb, Live Oak, Fla.
16	Mt. Gilead	M. J. Fowler, Day, Fla.
17	Mt. Olive	A. H. Townsend, Perry, Fla.
18	Mt. Pisgah	R. W. Henry, Live Oak, Fla.
19	New Hope	A. M. Rowe, Madison, Fla.
20	New Prospect	No Report.
21	O'Brien	A. H. Townsend, Perry, Fla.
22	Orange	W. H. Gray, Live Oak, Fla.
23	Philadelphia	Harold Link, Branford, Fla.
24	Pine Level	W. B. Liston, Branford, Fla.
25	Pine Mount	R. W. Henry, Live Oak, Fla.
26	Pleasant Hill	R. W. Henry, Live Oak, Fla.
27	Rocky Sink	T. J. Ellis, Live Oak, Fla.
28	Rose Mary	A. B. Franklin, Live Oak, Fla.
29	Shady Grove	E. H. Holcomb, Live Oak, Fla.
30	Suwannee	E. H. Holcomb, Live Oak, Fla.
31	Tiger Lake	A. M. Parker, Mayo, Fla.
32	Union	No Pastor.

SUNDAY SCHOOL SUPERINTENDENTS

Church	Name and Address
Beulah	Olen Dryden, Live Oak, Fla.
Branford	R. E. Hatch, Branford, Fla.
Bright Pond	B. M. Smith, Jasper, Fla.
Clayland	J. G. Brim, Live Oak, Fla.
Divonia	Mrs. D. M. Wheeler, Jasper, Fla.
Friendship, Suwannee	C. L. Jenkins, Live Oak, Fla.
Jasper	F. B. Harrell, Jasper, Fla.
Jennings	Geo. H. Perry, Jennings, Fla.
Live Oak	S. C. Kierce, Live Oak, Fla.
Mary Belle	Henry Martin, Live Oak, Fla.
Mt. Olive	W. M. Hogan, Live Oak, Fla.
Mt. Pisgah	H. T. Howell, O'Brien, Fla.
O'Brien	G. F. Hall, O'Brien, Fla.
Orange	Broward Webb, Live Oak, Fla.
Philadelphia	C. G. Howell, Pine Mount, Fla.
Pine Level	L. C. Newman, Live Oak, Fla.
Pleasant Hill	Allen Chauncey, Pine Mount, Fla.
Rocky Sink	Miss Mildred Scott, Live Oak, Fla.
Shady Grove	E. W. Parnell, Live Oak, Fla.
Suwannee	Proctor Phillips, Live Oak, Fla.
Tiger Lake	J. M. Robinson, Live Oak, Fla.

Note: No others reporting.

CHURCH CLERKS

No.	Church	Name and Address
1	Antioch	Mrs. J. L. Allison, Live Oak, Fla.
2	Belleville	No Report.
3	Bethel	No Report.
4	Beulah	W. A. Jordan, Live Oak, Fla.
5	Branford	J. W. Mears, Branford, Fla.
6	Bright Pond	Glenwood McCall, Jasper, Fla.
7	Clayland	Omer H. Ward, Live Oak, Fla.
8	Corinth	H. Burnett, Jasper, Fla.
9	Divonia	J. W. McCall, Jasper, Fla.
10	Friendship, Hamilton	J. A. Aldrich, Jasper, Fla.
11	Friendship, Suwannee	J. W. Jenkins, Pine Mount, Fla.
12	Jasper	Daniel Smith, Jasper, Fla.
13	Jennings	G. M. Stephens, Jennings, Fla.
14	Live Oak	Mrs. W. B. Parshley, Live Oak, Fla.

15	Mary Belle	Lavergne Mixon, Live Oak, Fla.
16	Mt. Gilead	Henry Warren, Live Oak, Fla.
17	Mt. Olive	H. L. Johns, Wellborn, Fla.
18	Mt. Pisgah	J. M. Crews, Pine Mount, Fla.
19	New Hope	R. J. Bush, Jennings, Fla.
20	New Prospect	No Report.
21	O'Brien	Lamar Wells, Branford, Fla.
22	Orange	J. M. N. Clark, Live Oak, Fla.
23	Philadelphia	S. Newburn, Live Oak, Fla.
24	Pine Level	L. C. Newman, Live Oak, Fla.
25	Pine Mount	J. H. Goff, McAlpin, Fla.
26	Pleasant Hill	W. H. Goff, Pine Mount, Fla.
27	Rocky Sink	Miss Ruth Johnson, Live Oak, Fla.
28	Rose Mary	Mrs. J. B. Williams, Live Oak, Fla.
29	Shady Grove	Fred Bray, Live Oak, Fla.
30	Suwannee	Mrs. Claude Jones, Live Oak, Fla.
31	Tiger Lake	C. M. Harrell, Live Oak, Fla.
32	Union	Miss Ruth M. Holmes, Live Oak, Fla.

REGULAR CHURCH AND BENEVOLENCE TREASURERS

No.	Church	Name and Address
1	Antioch	Mrs. A. K. Evans, Live Oak, Fla.
2	Belleville	No Report.
3	Bethel	No Report.
4	Beulah	W. A. Jordan, Live Oak, Fla.
5	Branford	J. W. Mears, Branford, Fla.
6	Bright Pond	C. Jenkins, Jasper, Fla.
7	Clayland	C. A. Landen, Live Oak, Fla.
8	Corinth	H. Burnett, Jasper, Fla.
9	Divonia	Lela McCall, Jasper, Fla.
10	Friendship, Hamilton	J. A. Aldrich, Jasper, Fla.
11	Friendship, Suwannee	O. B. Law, Live Oak, Fla.
12	Jasper	W. M. Hunter, Jasper, Fla.
13	Jennings	J. L. McDaniel, Jennings, Fla.
14	Live Oak	T. W. Blackstone, Live Oak, Fla.
15	Mary Belle	Byron Johns, Live Oak, Fla.
16	Mt. Gilead	Mrs. C. A. Griffin, Falmouth, Fla.
17	Mt. Olive	T. A. Knight, Wellborn, Fla.
18	Mt. Pisgah	J. M. Crews, Pine Mount, Fla.
19	New Hope	J. E. Bland, Jasper, Fla.
20	New Prospect	No Report.
21	O'Brien	Mrs. W. T. Smith, O'Brien, Fla.
22	Orange	DeWitt Johnston, Live Oak, Fla.
23	Philadelphia	S. Newburn, Live Oak, Fla.
24	Pine Level	Mrs. A. E. Lepper, Live Oak, Fla.
25	Pine Mount	H. L. Prevatt, Pine Mount, Fla.
26	Pleasant Hill	E. W. Bozeman, Pine Mount, Fla.
27	Rocky Sink	T. D. Tison, Live Oak, Fla.
28	Rose Mary	Mrs. J. B. Williams, Live Oak, Fla.
29	Shady Grove	Fred Bray, Live Oak, Fla.
30	Suwannee	Proctor Phillips, Live Oak, Fla.
31	Tiger Lake	J. M. Robinson, Live Oak, Fla.
32	Union	Miss Ruth M. Holmes, Live Oak, Fla.

AUXILIARIES

B. T. U. OFFICERS AND THEIR POST OFFICE ADDRESS

Churches	Work and Officer	Address
Bright Pond	Director, A. B. Franklin	Live Oak, Fla.
Live Oak	Director, J. L. McMullen	Live Oak, Fla.
Mt. Olive	Director, Mrs. W. M. Hogan	Live Oak, Fla.
O'Brien	Pres. Senior, Leonard Fletcher	O'Brien, Fla.
O'Brien	Leader Junior, Mrs. A. A. McInnis	O'Brien, Fla.
Tiger Lake	Pres. Senior, Miss Callie Dorman	Live Oak, Fla.

Note: No others reporting.

LAYMEN'S BROTHERHOOD DIRECTORS

Church	Name	Address
Live Oak	C. R. Smith	Live Oak, Fla.

Note: No others reporting.

WOMAN'S MISSIONARY SOCIETY PRESIDENTS

Church	Name	Address
Clayland	Mrs. Annie Goff	Live Oak, Fla.
Jasper	Mrs. K. L. Sandlin	Jasper, Fla.
Jennings	Mrs. Robert Tuten Jr.	Jennings, Fla.
Live Oak	Mrs. A. P. Goff	Live Oak, Fla.
Mt. Gilead	Mrs. C. E. Lawrence	Falmouth, Fla.
O'Brien	Mrs. T. J. Fletcher	O'Brien, Fla.
Philadelphia	Mrs. A. W. Ross	Live Oak, Fla.

Note: No others reporting.

CHOIR DIRECTORS OR LEADERS

Church	Name	Address
Beulah	Ike Carter	Live Oak, Fla.
Branford	Mrs. F. D. Phillips	Branford, Fla.
Bright Pond	Mrs. Jewell Bemby	Jasper, Fla.
Jasper	Mrs. L. B. Register	Jasper, Fla.
Live Oak	Delmar Howell	Live Oak, Fla.
Orange	J. H. Brown	Live Oak, Fla.
Shady Grove	C. A. Bray	Live Oak, Fla.

Note: No others reporting.

TABLE NUMBER ONE
CHURCH MEMBERSHIP, ETC., SUWANNEE BAPTIST ASSOCIATION
YEAR ENDING SEPTEMBER 30, 1938

CHURCHES	Is It in a Village, Town, City or Country?	When Constituted	PASTORS AND POST OFFICES	Days of Meeting	CHURCH MEMBERSHIP						Total Members Present	Weekly Prayer Meetings	Revel Meetings Held During Year	Observances of Lord's Supper During Year	Families Receiving State Baptist Paper
					GAINS	LOSSES	Members Reported Last Year	Baptisms	Letters	Statements					
1 Antioch	Country	1852 C.	L. Clements, Lake City, Fla.	3rd	54	2	1	51	No	1	1	No	3	3	
2 Belleville	"	1848	"	"	23			23							
3*Bethel	Village	1916	"	"	69			69							
4 Beulah	Country	1897 W. H. Gray, Live Oak, Fla.	"	3rd	105	6	2	102	No	1	No	None	6		
5 Branford	Town	1886 H. H. Link, Orlando, Fla.	"	1st & 3rd	182	4		179	Yes	7	No	4			
6 Bright Pond	Country	1890 A. B. Franklin, Live Oak, Fla.	"	1st	143	4	3	146	Yes	3	No	1			
7 Clayland	"	1873 W. H. Gray, Live Oak, Fla.	"	4th	147	1	4	146	Yes	2	No	1			
8 Corinth	"	1894 A. H. Townsend, Perry, Fla.	"	4th	96			96	Yes	2	No	1			
9 Divonia	"	1921 D. M. Wheeler, Jasper, Fla.	"	"	52			52	No	2	No	1			
10 Friendship, Hamilton	"	1883 W. N. Cone, Lake City, Fla.	"	"	35	8	7	35	No	1	No	1			
11 Friendship, Suwannee	"	1872 T. J. Ellis, Live Oak, Fla.	"	Full Time	90	3	1	86	Yes	1	4	12			
12 Jasper	Town	1862 W. T. Hugh-s., Jasper, Fla.	"	2nd	84	8	1	87	Yes	3	3	18			
13 Jennings	"	1868 John E. Nesome, Live Oak, Fla.	"	Full Time	412	38	53	487	Yes	4	13	2	3		
14 Live Oak	City	1892 E. H. Fowler, Day, Fla.	"	2nd	97	19	7	120	No	3	No	1	1		
15 Mary Belle	Country	1878 M. J. Holcomb, Live Oak, Fla.	"	3rd	44			44	Yes	5	1	1	12		
16 Mount Olive	"	1892 A. H. Townsend, Perry, Fla.	"	3rd	142	4	2	144	Yes	1	No	1	3		
17 Mount Olive	"	1892 A. H. Townsend, Perry, Fla.	"	3rd	90	8	5	104	Yes	1	No	1	3		
18 Mount Olive	"	1878 R. W. Henry, Madison, Fla.	"	3rd	155	5	3	159	Yes	1	No	1	3		
19 Mount Olive	"	1878 R. W. Henry, Madison, Fla.	"	3rd	20			20	Yes	1	No	1	3		
20*New Prospect	"	1933	"	"	187	28	10	220	Yes	2	2	2	2		
21 O'Brien	Town	1892 A. H. Townsend, Perry, Fla.	"	1st	128	19	10	141	Yes	1	1	3	None		
22 Orange	Country	1899 W. H. Gray, Live Oak, Fla.	"	2nd	233	13	2	244	Yes	6	No	1	3		
23 Philadelphia	"	1876 Harold Link, Branford, Fla.	"	2nd & 4th	47	2	4	50	Yes	1	No	1	3		
24 Pine Level	"	1926 S. G. Ward, Live Oak, Fla.	"	1st	43	1	3	41	No	3	No	1	None		
25 Pine Mount	Village	1928 R. W. Henry, Live Oak, Fla.	"	1st	103	5	3	100	Yes	10	No	1	None		
26 Pleasant Hill	Country	1884 R. W. Henry, Live Oak, Fla.	"	2nd & 4th	78	9	5	82	Yes	1	No	1	None		
27 Rocky Sink	"	1872 T. J. Ellis, Live Oak, Fla.	"	4th	30	2	1	27	Yes	1	No	2	1		
28 Rose Mary	"	1899 A. B. Franklin, Live Oak, Fla.	"	4th	78	13	1	92	Yes	1	No	1	None		
29 Shady Grove	Village	1933 E. H. Holcomb, Live Oak, Fla.	"	3rd	78	16	2	92	Yes	1	No	1	None		
30 Suwannee	Country	1871 E. H. Holcomb, Live Oak, Fla.	"	1st	31	4		31	Yes	5	No	1	12		
31 Tiger Lake	"	1889 A. M. Parker, Mayo, Fla.	"	1st	3,319	221	145	3,465	Yes	8	6	89	14	16	29
32 Union	"	1891 No Pastors	"	1st	3,319	221	145	3,465	Yes	8	6	89	14	16	29
TOTALS					3,319	221	145	3,465	29	32	68				

*Note: No report. Statistics taken from latest records.

G. L. DORMAN, Clerk of Suwannee Baptist Association, Live Oak, Florida.
REV. W. T. NEWSOME, Moderator of Suwannee Baptist Association, Live Oak, Florida.
NEXT ANNUAL MEETING: Time, October 12th and 13th, 1939. Place, Branford, Florida.

**W. M. U. ORGANIZATIONS AND GIFTS OF SUWANNEE BAPTIST ASSOCIATION
YEAR ENDING SEPTEMBER 30, 1938**

CHURCHES	PRESIDENTS OF W.M.S. AND POST OFFICES										W. M. U. WORK									
	Number of Women's Missionary Societies	Number of Y. W. A.'s	Number of G. A.'s	Number of R. A.'s	Number of Sunbeams	Total W. M. U. Organizations	W. M. S. Members	Y. W. A.'s Members	G. A.'s Members	R. A.'s Members	Sunbeam Members	Total Members Enrolled	Total Enrolled in Mission Study Courses	Contributions (Local Work) Given by W. M. U.	Contributions (Missions) Given by W. M. U.	Grand Total for All Purposes (Given by the W. M. U. and All Its Organizations)				
1 Branford	1	1	1	1	1	1	1	20	15	10	15	20	20	\$ 41.00	\$ 15.00	\$ 56.00				
2 Clayland	1	1	1	1	1	1	1	15	10	10	15	15	15	27.00	9.56	36.56				
3 Jennings	1	1	1	1	1	1	1	5	10	10	15	60	60	96.47	486.76	583.23				
4 Live Oak	1	1	2	2	1	7	1	19	12	47	15	19	19	77.37	10.12	87.49				
5 Mount Olive	1	1	1	1	1	2	1	105	12	47	15	21	20	166.37	590.06	756.43				
6 Mount Pisgah	1	1	1	1	1	2	1	15	5	5	20	12	12	8.50	26.00	34.50				
7 Shady Grove	1	1	1	1	1	1	1	13	1	1	13	13	32.55	11.65	44.20					
8 Tiger Lake	1	1	1	1	1	1	1	19	1	1	19	19	48.80	26.55	75.45					
9 Union	1	1	1	1	1	1	1	20	22	22	25	8	8	17.70	17.70	35.40				
TOTALS	9	2	4	3	2	20	2	276	67	25	40	230	230	\$498.06	\$1,193.50	\$1,691.56				

Note: Churches whose names do not appear have not reported any Organization.
G. L. DORMAN, Clerk of Suwannee Baptist Association, Live Oak, Florida.
REV. W. T. NEWSOME, Moderator of Suwannee Baptist Association, Live Oak, Florida.

**TABLE NUMBER FIVE
CHURCH PROPERTY OF SUWANNEE BAPTIST ASSOCIATION
YEAR ENDING SEPTEMBER 30, 1938**

CHURCHES	CHURCH CLERKS AND POST OFFICES		Does Your Church Own Its House of Worship?	When Was It Built?	Materials Used	Persons Seated	Number of Rooms	Dept. Assembly Rooms	No. Separate Class Rooms	Value of Church House and Grounds	Value of Pastor's Home	Total Value All Church Property	Indebtedness on All Church Property	Insurance Carried
	CHURCHES	POST OFFICES												
1 Antioch	Mrs. J. L. Allison, Live Oak, Fla.		Yes	1907	Wood	200	1	1		\$ 800		\$ 800		
2 Belleville	Geo. H. Perry, Jennings, Fla.		Yes	1907	Wood	200	1	1						
3 Bethel			No		Wood	300	1	1				1,000		
4 Beulah	W. A. Jordan, Live Oak, Fla.		Yes	1902	Wood	300	1	1	8	1,000		12,500		
5 Branford	J. W. Mears, Branford, Fla.		Yes	1928	Brick	250	9	1		1,563		1,563		
6 Bright Pond	Glennwood McCall, Jasper, Fla.		Yes	1932	Wood	300	1	1		1,000		1,000		
7 Clayland	Omer H. Ward, Live Oak, Fla.		Yes	1868	Wood	300	1	1		500		500		
8 Corinth	H. Burnett, Jasper, Fla.		Yes	1894	Wood	300	1	1						
9 Divonia	J. W. McCall, Jasper, Fla.		No		Wood	200	1	1		200		200		
10 Friendship, Hamilton	J. W. Jenkins, Pine Mount, Fla.		Yes	1883	Wood	200	1	1		700		700		
11 Friendship, Suwannee	Daniel Smith, Jasper, Fla.		Yes	1902	Brick	250	1	1	2	4,000		4,000		
12 Jasper	G. M. Stephens, Jennings, Fla.		Yes	1897	Wood	500	6	1	5	1,650		1,650		
13 Live Oak	Mrs. W. B. Parshley, Live Oak, Fla.		Yes	1904	Brick	400	15	6	9	17,500		21,250		
14 Mary Belle	Laverque Mixon, Live Oak, Fla.		Yes	1898	Wood	200	1	1		750		750		
15 Mount Olive	H. C. Johns, Falmouth, Fla.		Yes	1878	Wood	250	1	1		1,000		1,000		
16 Mount Pisgah	J. M. Greaves, Pine Mount, Fla.		Yes	1914	Wood	300	1	1		2,000		2,000		
17 New Hope	J. J. Burns, Jennings, Fla.		Yes	1875	Wood	300	1	1		950		950		
18 O'Brien	Mrs. A. B. Newsome, Jennings, Fla.		Yes	1907	Wood	400	1	1						
19 O'New Prospect	Lamar Wells, Branford, Fla.		Yes	1892	Wood	300	1	1		1,000		1,000		
20 Orange	I. M. N. Clark, Live Oak, Fla.		Yes	1899	Wood	200	1	1		1,000		1,000		
21 Philadelphia	S. Newbern, Live Oak, Fla.		Yes	1901	Wood	200	1	1		2,000		2,000		
22 Pine Level	L. C. Newman, Live Oak, Fla.		No		Wood	100	1	1		600		600		
23 Pine Mount	I. H. Goff, McAlpin, Fla.		Yes	1928	Wood	250	1	1		1,000		1,000		
24 Pleasant Hill	W. H. Goff, Pine Mount, Fla.		Yes	1928	Wood	200	1	1		900		900		
25 Rocky Sink	Miss Ruth Johnson, Live Oak, Fla.		Yes	1892	Wood	300	1	1		500		500		
26 Rose Mary	Mrs. J. B. Williams, Live Oak, Fla.		No		Wood	250	1	1		500		500		
27 Shady Grove	Fred Bray, Live Oak, Fla.		Yes	1883	Wood	150	1	1		225		225		
28 Suwannee	Mrs. Claude Jones, Live Oak, Fla.		Yes	1888	Wood	200	1	1		1,500		1,500		
29 Tiger Lake	C. M. Harrell, Live Oak, Fla.		Yes	1888	Wood	250	3	1	2	1,600		1,600		
30 Union	Miss Ruth M. Holmes, Live Oak, Fla.		Yes	1900	Wood	250	1	1		1,400		1,400		
TOTALS			7,600	65,350	\$73,388					\$7,750	\$81,138	\$2,280	\$23,045	

*Churches not reporting at this session of the Association. Statistics taken from latest records.
Columns in statistical table where no entries have been made are omitted in above table.
G. L. DORMAN, Clerk of Suwannee Baptist Association, Live Oak, Florida.
REV. W. T. NEWSOME, Moderator of Suwannee Baptist Association, Live Oak, Florida.

TABLE NUMBER SIX
GIFTS FOR LOCAL CHURCH WORK OF SUWANNEE BAPTIST ASSOCIATION
YEAR ENDING SEPTEMBER 30, 1938

CHURCHES	FOR SUPPORT OF LOCAL CHURCH WORK										SPECIAL INFORMATION					
	Pastor's Salary	Other Salaries	Ministerial Help and Supply	Buildings and Repairs	Church Debt and Interest	Incidentals	Literature for Sunday School and B. Y. P. U.	Help Given to Local Poor	For Printing the Minutes and Clerk of Association	Other Objects	Total for Local Purposes Given by the Church and All Its Organizations	Pledged to Cooperative Program	Pledged to Associational Mission	Number of Tithers	Budget System Used	Value Food and Clothing Given to Orphanage
	\$	\$	\$	\$	\$	\$	\$	\$	\$	\$	\$	\$	\$	\$	\$	\$
1 Antioch	112.97		25.00	10.00							150.47					
2 Belleville			18.77			4.12	12.00	1.36			171.25					26.45
3 Bethel	135.00					7.15	40.00		6.00		660.25					30.00
4 Beulah	491.10		41.00			2.96	20.70				283.40					53.92
5 Branford	159.70		28.18			15.00			2.02		358.94					16.74
6 Bright Pond	107.00		206.87								131.45					
7 Clayland	147.00		28.00				5.00				46.50					
8 Corinth	40.00															
9 Divonia																
10 Friendship, Hamilton																
11 Friendship, Suwannee	21.00		31.69						2.50		55.19					
12 Jasper	1,500.00		118.50	6.48		159.87	71.42	24.00	7.50	129.64	2,017.41	200.00	Yes		83.29	
13 Jennings	204.19		92.12	77.29		19.05	38.52		5.00	486.27	3,355.92	1	Yes		10.00	
14 Live Oak	1,820.00		456.67	55.02	303.72	420.38	25.80	58.88	15.50	199.95	3,355.92	10.00	20	Yes	50.00	
15 Mary Belle	58.83		7.15			2.65			3.00		71.63				16.90	
16 Mount Gilgoad	50.56		5.86	7.00		4.00			5.00	3.70	71.37		7	No	12.00	
17 Mount Olive	152.57		40.00	9.87		17.07	30.67		5.00		254.38				41.75	
18 Mount Pisgah	75.00		25.00			5.00			4.40		109.00				11.50	
19 New Hope	147.35		78.00	5.00							234.75				32.00	
20 O'Brien	200.00		111.00	9.00		8.67	25.87		5.00	55.00	414.54				38.10	
21 Orange	106.32		27.52	15.75		16.22	15.85		5.00	146.66	156.50				21.85	
22 Philadelphia	400.00		85.00			13.50			2.00	595.50	595.50				10.20	
23 Pine Level	34.15								3.00	86.65	86.65		2	No	22.20	
24 Pine Mount	76.00		17.00		10.00	1.30			3.00	107.30	107.30				29.64	
25 Pleasant Hill	192.00	7.50	11.55			8.00	4.00		6.00	218.55	117.90					
26 Rocky Sink	80.00		19.30			8.00			1.50	117.90	117.90				6.00	
27 Rose Mary	37.57		9.30			4.47	7.00		2.00	78.36	78.36				15.00	
28 Shady Grove	49.89		4.00			4.85			5.00	81.94	81.94		10		39.71	
29 Suwannee	55.17	2.17	56.20	7.39			23.69	10.00	10.00	117.20	394.98		9		39.71	
30 Tiger Lake	180.00								3.66	3.66	3.66				6.00	
31 Union															15.00	
32 TOTALS	\$6,572.43	\$9,671,320.41	\$517,963	\$313,727	\$64,336	\$350,677	\$94,241	\$120,622	\$514,511	\$10,578.59	\$1,000,000	\$10,000	66		\$556.65	

*Churches not reporting by letter at this session of the Association.

Note: Names of Church Treasurers will be found in Table 7, and in Church Directory.
G. L. DORMAN, Clerk of Suwannee Baptist Association, Live Oak, Florida.
REV. W. T. NEWSOME, Moderator of Suwannee Baptist Association, Live Oak, Florida.

TABLE NUMBER SEVEN
GIFTS FOR MISSIONS, EDUCATION AND ALL BENEVOLENCES
OF THE SUWANNEE BAPTIST ASSOCIATION
YEAR ENDING SEPTEMBER 30, 1938

CHURCHES	REGULAR TREASURERS AND POST OFFICES										SPECIAL INFORMATION							
	Total to Co-operative Program	Special to Associational Missions	Special to State Missions	Special to Home Missions	Special to Foreign Missions	Special to Christian and Ministerial Education	Special to Orphanage	Special to Hospitals	Special to Old Ministers' Relief	Other Special Gifts	(Missions, Etc.) Total Given for Missions and Benevolences by the Church and All Departments	Grand Total for All Purposes—Both Local Work and Missions—Church and All Its Organizations	Pledged to Program	Pledged to Associational Mission	Number of Tithers	Budget System Used	Value Food and Clothing Given to Orphanage	
	\$	\$	\$	\$	\$	\$	\$	\$	\$	\$	\$	\$	\$	\$	\$	\$	\$	
1 Antioch																		
2 Belleville																		
3 Bethel																		
4 Beulah																		
5 Branford	16.04				5.00						43.51							
6 Bright Pond	98.95										78.17							
7 Clayland	2.09		2.54								60.77							
8 Corinth	39.08	8.32									16.74							
9 Divonia	3.00																	
10 Friendship, Hamilton																		
11 Friendship, Suwannee																		
12 Jasper																		
13 Jennings	208.29		11.68	16.23	14.53	50.00					83.29	4.74						
14 Live Oak	735.29	5.00	15.23	2.31							14.92							
15 Mary Belle	5.00	10.00	35.23	38.81	54.63						82.29							
16 Mount Gilgoad	5.00	2.00	2.00	3.00							15.90							
17 Mount Olive	36.17	2.00									22.50							
18 Mount Pisgah	9.19										94.88							
19 New Hope											11.90							
20 O'Brien											32.00							
21 Orange	54.02		2.40	4.25							46.22							
22 Philadelphia	29.50		2.41								21.85							
23 Pine Level	44.20										42.00							
24 Pine Mount	5.64										10.20							
25 Pleasant Hill											22.20							
26 Rocky Sink											29.64							
27 Rose Mary											248.19							
28 Shady Grove											117.90							
29 Suwannee											6.00							
30 Tiger Lake											15.00							
31 Union	112.21										81.76							
32 TOTALS	\$1,410,222	\$25,328	\$71,490	\$56,229	\$98,974	\$50,000	\$776,224	\$4,774	\$6,500	\$288,031	\$2,787,800	\$13,866.39						

*Churches not reporting at this session of the Association.

G. L. DORMAN, Clerk of Suwannee Baptist Association, Live Oak, Florida.
REV. W. T. NEWSOME, Moderator of Suwannee Baptist Association, Live Oak, Florida.

HISTORICAL TABLE

Date	Church	Moderator	Clerk	Preacher
1876	Antioch.....	B. D. Harrell	R. F. Rogers	J. R. Kimbrew
1877	Mt. Pleasant.....	M. A. Clonts	R. F. Rogers	J. G. Taylor
1878	Piquet Lake.....	J. N. Reid	J. M. Caldwell.....	B. R. Mosley
1879				
1880	Mt. Pleasant.....	D. F. Ward	J. M. Caldwell.....	R. W. Phillips
1881				
1882	Midway.....	W. B. High	J. W. Grantham.....	J. W. Fleming
1883	Friendship.....	W. B. High	J. W. Grantham.....	J. W. Fleming
1884				
1885	Piquet Lake.....	W. B. High	J. W. Grantham.....	J. W. Grantham
1886	Mt. Gilead.....	B. D. Harrell	W. B. High	Z. Dees
1887	Tiger Lake.....	B. D. Harrell	W. J. Carroll	B. D. Harrell
1888	Half Moon Lake.....	B. D. Harrell	W. C. Johnson.....	F. W. Wells
1889	Philadelphia.....	B. D. Harrell	A. J. Carroll	E. Trice
1890	Clayland.....	W. J. Carroll	H. C. Sealy	W. J. Carroll
1891	Hatch Bend.....	B. D. Harrell	C. L. Mills	T. J. Kelly
1892	Mt. Pisgah.....	J. F. Tatum	R. A. Reid	
1893	Rocky Sink.....	B. D. Harrell	R. A. Reid	E. B. Mills
1894	Tiger Lake.....	R. W. Phillips	R. A. Reid	B. D. Harrell
1895	Friendship.....	R. W. Phillips	R. A. Reid	W. C. Lee
1896	Mt. Olive.....	R. W. Phillips	R. A. Reid	J. J. Holmes
1897				
1898	O'Brien.....	B. D. Harrell	C. L. Mills	W. C. Lee
1899	Live Oak.....	W. S. Hodge	C. L. Mills	J. F. Tatum
1900	Antioch.....	W. S. Hodge	C. L. Mills	A. J. Reamy
1901	Mt. Gilead.....	W. S. Hodge	C. L. Mills	B. M. Bean
1902	Union.....	J. F. Tatum	W. W. Leggett.....	L. D. Geiger
1903	Evergreen.....	J. R. Newlan	C. L. Mills	J. F. Tatum
1904	Philadelphia.....	J. R. Newlan	R. R. Brown	F. C. Edwards
1905	Clayland.....	J. R. Newlan	R. R. Brown	J. S. Parker
1906	Live Oak.....	B. D. Harrell	R. R. Brown	E. H. Reynolds, Sr.
1907	Jennings.....	B. A. Geiger	W. H. Mills	G. A. Nunally
1908	Orange.....	B. A. Geiger	S. D. Huggins.....	A. J. York
1909	O'Brien.....	B. A. Geiger	S. D. Huggins.....	W. H. Holmes
1910	Antioch.....	J. R. Wells	S. D. Huggins.....	F. H. Watkins
1911	Rocky Sink.....	A. J. York	H. B. Brown	F. H. Watkins
1912	Antioch.....	A. J. York	R. J. Allen	W. R. Ivey
1913	Jasper.....	A. J. York	R. J. Allen	H. A. Jordan
1914	Jennings.....	A. J. York	R. J. Allen	J. B. Dixon
1915	Philadelphia.....	A. J. York	R. J. Allen	W. B. Parshley
1916	Tiger Lake.....	A. J. York	R. J. Allen	H. A. Jordan
1917	Antioch.....	T. L. Peacock	G. L. Dorman	A. B. Canady
1918	Mt. Olive.....	A. J. York	G. L. Dorman	Gus Padgett
1919	Clayland.....	A. J. York	G. L. Dorman	S. B. Cole
1920	Beulah.....	A. J. York	G. L. Dorman	J. A. Davis
1921	Jasper.....	E. R. Wise	G. L. Dorman	W. C. Taylor
1922	Tiger Lake.....	E. R. Wise	G. L. Dorman	P. A. Roberts
1923	Mt. Gilead.....	W. C. Taylor	G. L. Dorman	W. C. Taylor
1924	Jasper.....	W. C. Taylor	G. L. Dorman	W. W. William
1925	O'Brien.....	W. C. Taylor	G. L. Dorman	E. G. Diamond
1926	Orange.....	W. C. Taylor	G. L. Dorman	W. C. Taylor
1927	Live Oak.....	L. B. White	G. L. Dorman	R. P. McPherson.....
1928	Tiger Lake.....	Jacob A. Johnson.....	G. L. Dorman	E. A. McDowell
1929	Bright Pond.....	R. J. Bush	G. L. Dorman	None
1930	Clayland.....	H. J. Horne	G. L. Dorman	A. M. Parker
1931	Branford.....	H. J. Horne	G. L. Dorman	Dr. E. D. Solomon
1932	Philadelphia.....	H. J. Horne	G. L. Dorman	W. T. Newsome
1933	Pleasant Hill.....	H. J. Horne	G. L. Dorman	H. O. Hughes
1934	Mount Olive.....	H. J. Horne	G. L. Dorman	Dr. John E. Evans
1935	Live Oak.....	John E. Evans.....	G. L. Dorman	H. O. Hughes
1936	New Hope.....	John E. Evans.....	G. L. Dorman	W. C. Taylor
1937	Jasper.....	H. O. Hughes	G. L. Dorman	Dr. E. D. Solomon..
1938	O'Brien.....	W. T. Newsome.....	G. L. Dorman	A. M. Parker

