

# Middle Florida Missionary Baptist Association

Florida



## FIFTY-SEVENTH ANNUAL SESSION

Held With

**MIDWAY BAPTIST CHURCH**

**OCTOBER 4th, 1956**

And

**PLEASANT GROVE (Lay.) BAPTIST CHURCH**

**OCTOBER 5th, 1956**



## Fifty-Eighth Annual Session of the Association

Will Convene With

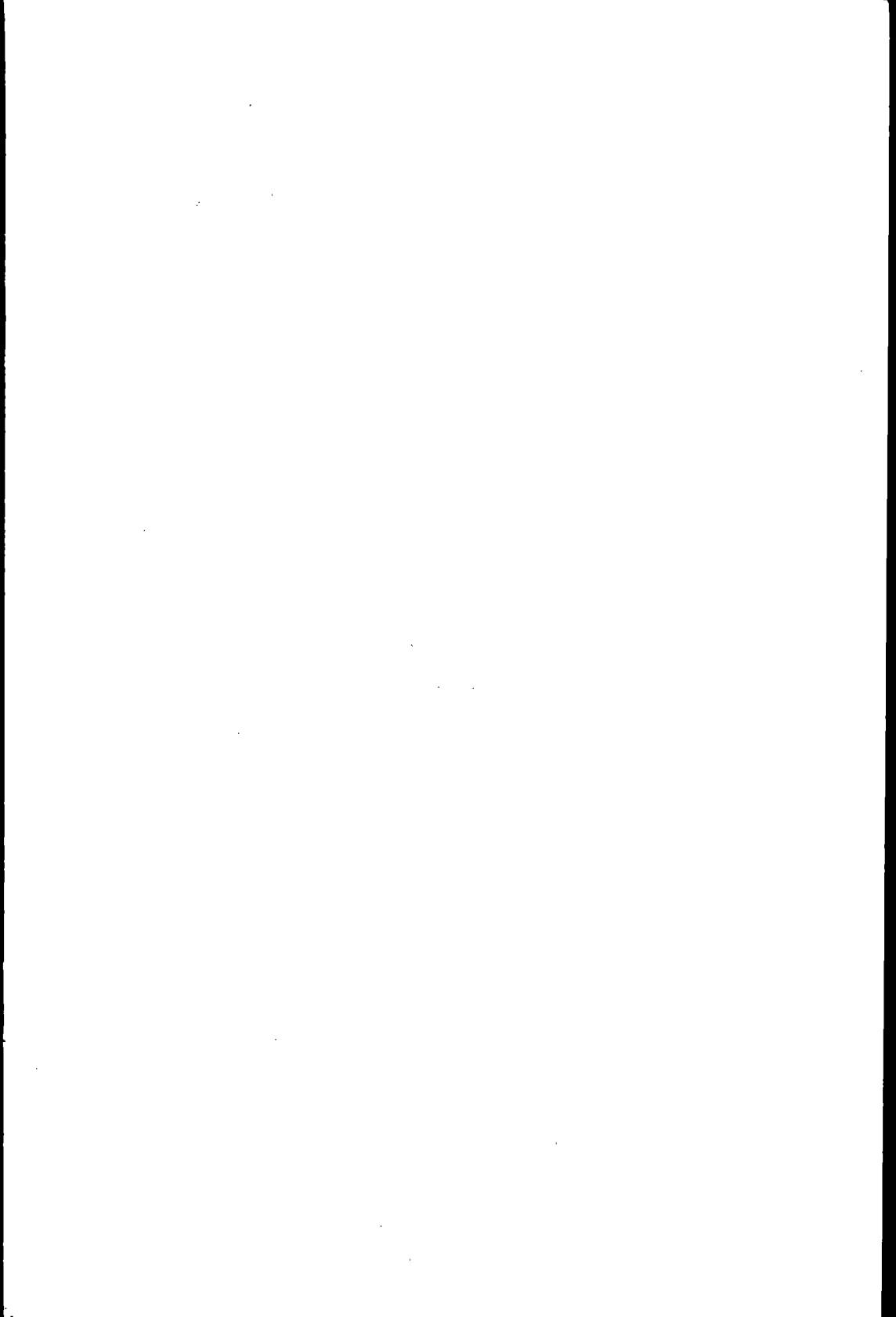
**1st DAY—ATHENA BAPTIST CHURCH**

**2nd DAY—PLEASANT GROVE (Tay.) BAPTIST CHURCH**

**OCTOBER 17 & 18, 1957**



1956



## ARTICLES OF FAITH

### I. The Scriptures

We believe that the Holy Bible was written by men divinely inspired, and is a perfect treasure of heavenly instruction; that it has God for its author, salvation for its end, and truth, without any mixture of error, for its matter; that it reveals the principles by which God will judge us; and therefore is, and will remain to the end of the world, the true center of Christian union, and the supreme standard by which all human conduct, creeds and religious opinions should be tried.

### II. God

There is one and only one living and true God, an intelligent, spiritual, and personal Being, the Creator, Preserver, and Ruler of the universe, infinite in holiness and all other perfections, to whom we owe the highest love, reverence, and obedience. He is revealed to us as Father, Son, and Holy Spirit, each with distinct personal attributes, but without division of nature, essence, or being.

### III. The Fall of Man

Man was created by the special act of God, as recorded in Genesis. "So God created man in his own image, in the image of God created he him; male and female created he them" (Gen. 1:27). "And the Lord God formed man of the dust of the ground, and breathed into his nostrils the breath of life; and man became a living soul" (Gen. 2:7).

He was created in a state of holiness under the law of his Maker, but, through the temptation of Satan, he transgressed the command of God and fell from his original holiness and righteousness; whereby his posterity inherit a nature corrupt and in bondage to sin, are under condemnation, and as soon as they are capable of moral action, become actual transgressors.

### IV. The Way of Salvation

The salvation of sinners is wholly of grace, through the mediatorial office of the Son of God, who by the Holy Spirit was born of the Virgin Mary and took upon him our nature, yet without sin; honored the divine law by his personal obedience and made atonement for our sins by his death. Being risen from the dead, he is now enthroned in Heaven, and, uniting in his person the tenderest sympathies with divine perfections, he is in every way qualified to be a compassionate and all-sufficient Saviour.

### V. Justification

Justification is God's gracious and full acquittal upon principles of righteousness of all sinners who believe in Christ. This blessing is bestowed, not in consideration of any works of righteousness which we have done, but through the redemption that is in and through Jesus Christ. It brings us into a state of most blessed peace and favor with God, and secures every other needed blessing.

### VI. The Freeness of Salvation

The blessings of salvation are made free to all by the gospel. It is the duty of all to accept them by penitent and obedient faith. Nothing prevents the salvation of the greatest sinner except his own voluntary refusal to accept Jesus Christ as teacher, Saviour, and Lord.

### VII. Regeneration

Regeneration or the new birth is a change of heart wrought by the Holy Spirit, whereby we become partakers of the divine nature and a holy disposition is given, leading to the love and practice of righteousness. It is a work of God's free grace conditioned upon faith in Christ and made manifest by the fruit which we bring forth to the glory of God.

### VIII. Repentance and Faith

We believe that repentance and faith are sacred duties, and also inseparable graces, wrought in our souls by the regenerating Spirit of God; whereby being deeply convinced of our guilt, danger, and helplessness, and of the way of salvation by Christ, we turn to God with unfeigned contrition, confession, and supplication for mercy; at the same time heartily receiving the Lord Jesus Christ as our Prophet, Priest, and King, and relying on him alone as the only and all-sufficient Saviour.

### IX. God's Purpose of Grace

Election is the gracious purpose of God, according to which he regenerates, sanctifies and saves sinners. It is perfectly consistent with the free agency of man, and comprehends all the means in connection with the end. It is a most glorious display of God's sovereign goodness, and is infinitely wise, holy, and unchangeable. It excludes boasting and promotes humility. It encourages the use of means in the highest degree.

### X. Sanctification

Sanctification is the process by which the regenerate gradually attain to moral and spiritual perfection through the presence and power of the Holy Spirit dwelling in their hearts. It continues throughout the earthly life, and is accomplished by the use of all the ordinary means of grace, and particularly by the Word of God.

### XI. Perseverance

All real believers endure to the end. Their continuance in well-doing is the mark which distinguishes them from mere professors. A special Providence cares for them, and they are kept by the power of God through faith unto salvation.

### XII. A Gospel Church

A church of Christ is a congregation of baptized believers, associated by covenant in the faith and fellowship of the gospel; observing the ordinances of Christ, governed by his laws, and exercising the gifts, rights, and privileges invested in them by his word, and seeking to extend the gospel to the ends of the earth. Its Scriptural officers are bishops, or elders, and deacons.

### XIII. Baptism and the Lord's Supper

Christian baptism is the immersion of a believer in water in the name of the Father, the Son, and the Holy Spirit. The act is a symbol of our faith in a crucified, buried and risen Saviour. It is a prerequisite to the privileges of a church relation and to the Lord's Supper, in which the members of the church, by the use of bread and wine, commemorate the dying love of Christ.

### XIV. The Lord's Day

The first day of the week is the Lord's day. It is a Christian institution for regular observance. It commemorates the resurrection of Christ from the dead and should be employed in exercises of worship and spiritual devotion, both public and private, and by refraining from worldly amusements, and resting from secular employments, works of necessity and mercy only excepted.

### XV. The Righteous and the Wicked

There is a radical and essential difference between the righteous and wicked. Those only who are justified through the name of the Lord Jesus Christ and sanctified by the Holy Spirit are truly righteous in his sight. Those who continue in impenitence and unbelief are in his sight wicked and are under condemnation. This distinction between the righteous and the wicked holds in and after death, and will be made manifest at the judgment when final and everlasting awards are made to all men.

### XVI. The Resurrection

The Scriptures clearly teach that Jesus rose from the dead

His grave was emptied of its contents. He appeared to the disciples after his resurrection in many convincing manifestations. He now exists in his glorified body at God's right hand. There will be a resurrection of the righteous and the wicked. The bodies of the righteous will conform to the glorious spiritual body of Jesus.

#### **XVII. The Return of the Lord**

The New Testament teaches in many places the visible and personal return of Jesus to this earth. "This same Jesus which is taken up from you into heaven, shall so come in like manner as ye have seen him go into heaven." The time of his coming is not revealed. "Of that day and hour knoweth no one, no, not the angels in heaven, but my Father only" (Matt. 24:36). It is the duty of all believers to live in readiness for his coming and by diligence in good works to make manifest to all men the reality and power of their hope in Christ.

#### **XVIII. Religious Liberty**

God alone is Lord of the conscience, and he has left it free from the doctrines and commandments of men which are contrary to his Word or not contained in it. Church and state should be separate. The state owes to the church protection and full freedom in the pursuit of its spiritual ends. In providing for such freedom no ecclesiastical group or denomination should be favored by the state more than others. Civil government being ordained of God, it is the duty of Christians to render loyal obedience thereto in all things not contrary to the revealed will of God. The church should not resort to the civil power to carry on its work. The gospel of Christ contemplates spiritual means alone for the pursuit of its ends. The state has no right to impose penalties for religious opinions of any kind. The state has no right to impose taxes for the support of any form of religion. A free church in a free state is the Christian ideal, and this implies the right of free and unhindered access to God on the part of all men, and the right to form and propagate opinions in the sphere of religion without interference by the civil power.

#### **XIX. Peace and War**

It is the duty of Christians to seek peace with all men on principles of righteousness. In accordance with the spirit and teachings of Christ they should do all in their power to put an end to war.

The true remedy for the war spirit is the pure gospel of our Lord. The supreme need of the world is the acceptance of his teachings in all the affairs of men and nations, and the practical application of his law of love.

We urge Christian people throughout the world to pray for the reign of the Prince of Peace, and to oppose everything likely to provoke war.

#### **XX. Education**

Christianity is the religion of enlightenment and intelligence. In Jesus Christ are hidden all the treasures of wisdom and knowledge. All sound learning is therefore a part of our Christian heritage. The new birth opens all human faculties and creates a thirst for knowledge. An adequate system of schools is necessary to a complete spiritual program for Christ's people. The cause of education in the Kingdom of Christ is co-ordinate with the causes of missions and general benevolence, and should receive along with these the liberal support of the churches.

#### **XXI. Social Service**

Every Christian is under obligation to seek to make the will of Christ regnant in his own life and in human society: to oppose in the spirit of Christ every form of greed, selfishness, and vice; to provide for the orphaned, the aged, the helpless, and the

sick; to seek to bring industry government, and society as a whole under the sway of the principles of righteousness, truth and brotherly love; to promote these ends Christians should be ready to work with all men of good will in any good cause, always being careful to act in the spirit of love without compromising their loyalty to Christ and his truth. All means and methods used in social service for the amelioration of society and the establishment of righteousness among men must finally depend on the regeneration of the individual by the saving grace of God in Christ Jesus.

#### **XXII. Co-Operation**

Christ's people should, as occasion requires, organize such associations and conventions as may best secure co-operation for the great objects of the Kingdom of God. Such organizations have no authority over each other or over the churches. They are voluntary and advisory bodies designed to elicit, combine, and direct the energies of our people in the most effective manner. Individual members of New Testament churches should co-operate with each other, and the churches themselves should co-operate with each other in carrying forward the missionary, educational, and benevolent program for the extension of Christ's Kingdom. Christian unity in the New Testament sense is spiritual harmony and voluntary co-operation for common ends by various groups of Christ's people. It is permissible and desirable as between the various Christian denominations, when the end to be attained is itself justified, and when such co-operation involves no violation of conscience or compromise of loyalty to Christ and his Word as revealed in the New Testament.

#### **XXIII. Evangelism and Missions**

It is the duty of every Christian man and woman, and the duty of every church of Christ to seek to extend the gospel to the ends of the earth. The new birth of man's spirit by God's Holy Spirit means the birth of love for others. Missionary effort on the part of all rests thus upon a spiritual necessity of the regenerate life. It is also expressly and repeatedly commanded in the teachings of Christ. It is the duty of every child of God to seek constantly to win the lost to Christ by personal effort and by all other methods sanctioned by the gospel of Christ.

#### **XXIV. Stewardship**

God is the source of all blessings, temporal and spiritual; all that we have and are we owe to him. We have a spiritual debtorship to the whole world, a holy trusteeship in the gospel, and a binding stewardship in our possessions. We are therefore under obligation to serve him with our time, talents and material possessions; and should recognize all these as entrusted to us for the glory of God and helping others. Christians should cheerfully, regularly, systematically, proportionately, and liberally contribute of their means to advancing the Redeemer's cause on earth.

#### **XXV. The Kingdom**

The Kingdom of God is the reign of God in the heart and life of the individual in every human relationship, and in every form and institution of organized human society. The chief means for promoting the Kingdom of God on earth are preaching the gospel of Christ and teaching the principles of righteousness contained therein. The Kingdom of God will be complete when every thought and will of man shall be brought into captivity to the will of Christ. And it is the duty of all Christ's people to pray and labor continually that his Kingdom may come and his will be done on earth as it is done in heaven.

**THE MIDDLE FLORIDA BAPTIST ASSOCIATION**

**RULES OF DECORUM**

1. The Moderator shall preserve order in the Association, which shall be opened and closed by prayer. He shall decide all questions of order and propriety.
2. All members of the body shall respect the authority of the Moderator, but any member shall have the right to appeal to the body from his decision.
3. The Moderator shall have the same right of speaking as any other member of the body provided he appoints some member to fill the chair; but he shall not vote except when there is a tie, when he may cast the deciding vote.
4. No more than one member shall speak at a time. Any member desiring to speak shall rise from his seat and address the Moderator and when recognized by the chair may speak to the subject, but not more than twice on the same subject without permission of the body.
5. No member shall leave the body while in session without permission of the chair.
6. All motions in order must be disposed of by the body, unless withdrawn by the one who made the motion.
7. When a question is taken up, after allowing time for deliberation, the Moderator shall take the vote of the body and then announce the decision. If a division is called for the Moderator shall take the vote by calling on the members to rise and stand until they are counted. After the count is made on both sides the Moderator shall announce the result.
8. The Clerk shall enroll the names of the Messengers, and keep a regular record of all the business of the Association. He shall have the Minutes printed and distributed to each church, according to the amount of money sent up.
9. The Treasurer shall receive and manage the funds of the Association, taking receipts of all disbursements thereof, and present an annual report of all funds received and disbursed, for insertion in the Minutes of the Association.
10. This decorum may be altered or amended by two-thirds vote of the members present at any annual session of the Association.

**CONSTITUTION**

of

**THE MIDDLE FLORIDA BAPTIST ASSOCIATION**

Article 1. The name of this organization shall be "THE MIDDLE FLORIDA MISSIONARY BAPTIST ASSOCIATION."

Article 2. The Association shall be composed of messengers duly elected by the Churches affiliated with this body who shall present letters certifying to their election, or other satisfactory evidence thereof, and all ordained pastors who are members of or pastors of any of said churches.

Article 3. Each church having fifty members or less shall be entitled to two messengers. Churches having more than fifty members shall be entitled to one additional messenger for every twenty-five members or major fraction thereof.

Article 4. The objects of this Association shall be the promotion of fellowship among the churches, and the fostering of Missionary, Educational and Benevolent enterprises, in harmony with the Florida Baptist State Convention and the Southern Baptist Convention.

Article 5. The Association shall meet annually at such time and place as may be selected by the body. If it should become necessary, the Executive Committee of the Association may change the time, or place of meeting, or both.

Article 6. Any church, in harmony with this Association as to doctrine and practice, may be admitted into the union upon the presentation of a petitionary letter accompanied by satisfactory information.

Article 7. Any church wishing for a letter of dismission shall make application therefor by letter.

Article 8. The officers of this Association shall be a Moderator, an assistant Moderator, who shall be a layman or Pastor who shall act as Moderator in the absence of the Moderator, and who shall also be Moderator for the Fifth Sunday Meetings, a Clerk and a Treasurer, who shall be elected annually by the suffrage of the messengers elected by the Churches, and shall hold office until their successors are elected.

Article 9. This Association shall have an Executive Committee composed of a lay member from each Church and the Pastors of each Church belonging to this Association, the Associational Sunday School Superintendent, the Associational B. T. U. Director, the Associational Woman's Missionary Union President, the Associational Brotherhood President, together with the officers as Ex-officio members. This committee shall foster all the interest of the Association, when the body is not in session. The Committee shall have authority to appoint or recommend to the State Board Missionaries, or colporteurs, and to make appropriation to weak churches or destitutions, and to give such advice to the churches as may seem wise and necessary, and the Moderator shall be chairman of the Executive Committee.

Article 10. The Articles of Faith of this Association shall be the same as those which are adopted by the Southern Baptist Convention when in session at Memphis, Tennessee, in May, 1925, and shall be the basis of fellowship and cooperation.

Article 11. The Association shall recognize and respect the rights and independence of every church cooperating.

Article 12. This Constitution may be changed or amended at any annual meeting of the body when two-thirds of the members present deem it expedient.



## ASSOCIATION DIRECTORY

Rev. Francis W. Cruce, Moderator .....	Rt. 1, Perry, Fla.
Rev. W. L. Price, Vice-Moderator .....	Rt. 2, Perry, Fla.
Guy M. McClain, Treasurer .....	Mayo, Fla.
Carl W. Burnett, Clerk .....	Madison, Fla.

## Executive Committee

Athena—Bill Howell .....	Rt. 2, Perry, Fla.
Brewer Lake—M. L. Smith .....	Rt., Mayo, Fla.
Greenville—J. D. Clayton .....	Greenville, Fla.
Lakeside—Jesse R. Ward .....	1006N Washington St., Perry, Fla.
Macedonia—Mrs. Leila Milford .....	Madison, Fla.
Madison—W. T. Coody .....	Madison, Fla.
Mayo—Guy M. McClain .....	Mayo, Fla.
Midway—Cecil Hicks .....	Lee, Fla.
Mt. Olive—Colon Bell .....	Rt. 1, Lee, Fla.
New Home—Perry—T. R. Coggins .....	Perry, Fla.
New Hopeful—T. Z. Henderson .....	Madison, Fla.
Perry First—Dr. W. H. Peacock .....	Perry, Fla.
Pinetta—Wesley Downing .....	Pinetta, Fla.
Pisgah—D. W. Morgan .....	Rt. 1, Perry, Fla.
Sirmans—Kelly Bailey .....	Greenville, Fla.
New Home, Madison—Sim H. Andrews .....	Rt., Madison, Fla.
Beulah—Lamar Stokes .....	Lee, Fla.
Lee—Quinton Dryden .....	Lee, Fla.
Cherry Lake—Albert Gentry .....	Rt. 3, Madison, Fla.
St. Johns—W. B. Wynn .....	Greenville, Fla.
Friendship—A. R. Roberts .....	Perry, Fla.

## Committee Chairmen, 1957

Evangelism—Rev. F. W. Cruce .....	Rt. 2, Perry, Fla.
Children's Home—G. F. Andrews .....	Greenville, Fla.
Missions—Rev. James T. Barber .....	Madison, Fla.
Cooperative Program—Rev. C. T. Hall .....	Box 412, Perry, Fla.
Christian Education—Rev. F. A. Parker .....	Perry, Fla.
American Bible Society—Rev. S. V. Cofield .....	Mayo, Fla.
Eudget—Rev. L. M. Lafferty .....	Lee, Fla.
Rev. Alva Horton .....	Perry, Fla.
Rev. T. A. Goodman .....	Shady Grove, Fla.
Temperance—Rev. J. R. Collins .....	Greenville, Fla.
Relief & Annuity—Rev. J. M. Sullivan .....	Rt. 1, Perry, Fla.
Our Beloved Dead—Rev. Robt. A. Kelly .....	Rt. 3, Madison, Fla.
Nominations—Rev. I. L. Barber .....	Rt. 2, Mayo, Fla.
Rev. Odis Murphy .....	Box 619, Perry, Fla.
Rev. C. T. Lewis .....	Shady Grove, Fla.
Church Music—Miss Jean Adams .....	Perry, Fla.
Baptist Hospitals—Rev. W. L. Price .....	Rt. 2, Perry, Fla.
Stewardship—Rev. Dewey Mann .....	Perry, Fla.
Resolutions—Rev. C. F. Hooker .....	Day, Fla.
Time & Place—Rev. I. T. Carter .....	Jasper, Fla.
Middle Fla. Assembly Grounds .....	Rev. J. T. Barber Madison, Fla.
Middle Fla. Assembly Grounds Trustees—	
Rev. James T. Barber .....	Madison, Fla.

Rev. Dewey Mann .....	Perry, Fla.
Carl W. Burnett .....	Madison, Fla.
Radio & Television Chairman—Byron Tedder .....	Perry, Fla.
Seminaries Chairman—Madison L. Smith .....	Mayo, Fla.
Middle Fla. Assembly Grounds Directors—	
Rev. James T. Barber .....	Madison, Fla.
Rev. Alva Eorton .....	Perry, Fla.
Rev. S. V. Coffield .....	Mayo, Fla.

#### Sermons

Associational—Rev. C. T. Hall .....	Box 412, Perry, Fla.
Alternate—Rev. I. T. Carter .....	Jasper, Fla.
Missionary—Rev. W. L. Price .....	Rt. 2, Perry, Fla.
Alternate—Rev. F. A. Parker .....	Perry Fla.

#### Brotherhood Officers

President—Rev. Odis Murphy .....	Box 619, Perry, Fla.
Program Vice-President—Ernest Page .....	Madison, Fla.
Attendance Vice-President—Eugene Muggle .....	Greenville, Fla.
Promotional Vice-President—Rev. B. A. Rakestraw .....	Madison, Fla.
Sec.-Treas.—J. C. Williams .....	Perry, Fla.
Choirster—Sidney Hendry .....	Perry, Fla.
Pianist—James Lewis .....	Perry, Fla.
Advisory Council—Rev. Felder Rowan .....	Pinetta, Fla.
Rev. F. W. Cruce .....	Rt. 2, Perry, Fla.
Rev. Dozier Sapp .....	Madison, Fla.

#### W. M. U. Officers

President—Mrs. Roy Milliron .....	Madison, Fla.
Vice-President—Mrs. Albert Gentry .....	Greenville, Fla.
Mission Study Chairman—Mrs. Jack Wynn .....	Madison, Fla.
Prayer Chairman—Mrs. J. L. Bishop .....	Rt. 3, Monticello, Fla.
Community Missions Charman—Mrs. S. V. Blanton .....	Mayo, Fla.
Stewardship Chairman—Mrs. Francis Cruce .....	Rt. 2, Perry, Fla.
Training School Chairman—Mrs. S. V. Coffield .....	Mayo, Fla.
Children's Home Chairman—Mrs. J. M. Sullivan .....	Rt. 1, Perry, Fla.
Publicity Chairman—Mrs. R. L. Whitfield .....	Perry, Fla.
Youth Chairman—Mrs. Corene Carlton .....	Perry, Fla.
Choirster—Mrs. T. M. Raines .....	Madison, Fla.
Sec.-Treas.—Mrs. Ernest Handley .....	Greenville, Fla.

#### Training Union Officers

Director—Horace Weaver .....	Rt. 3, Madison, Fla.
Associate Director—Miss Edith Albritton .....	Perry, Fla.
Pastor Advisor—Rev. L. M. Lafferty .....	Lee, Fla.
Sec.-Treas.—Mrs. Annette Croft .....	Mayo, Fla.
Pianist—Miss Imogene Simons .....	Foley, Fla.
Choirster—Mrs. Lola Weaver .....	Rt. 3, Madison, Fla.
Adult Leader—Mrs. Doris Louis .....	Perry, Fla.
Young People's Leader—Mrs. J. O. Simons .....	Foley, Fla.
Intermediate Leader—Mrs. Howard Coody .....	Pinetta, Fla.
Assoc. Intermediate Leader—	
Miss Sally Wilson .....	Rt. 3, Madison, Fla.

Junior Leader—Mrs. J. R. Collins ..... Greenville, Fla.  
 Assoc. Junior Leader—  
 Primary Leader—Mrs. Dorothy Shaw ..... Rt. 3, Madison, Fla.  
 Eeginners Leader—Mrs. Lcuise Williams ..... Rt. 3, Madison, Fla.  
 Nursery Leader—Mrs. Mike Humphrey ..... Madison, Fla.  
 Group Leader—Mr. W. O. McCullough ..... Madison, Fla.  
                Mr. Eugene Mugge ..... Greenville, Fla.  
                Mr. Ellis Lipscomb ..... Perry,, Fla.  
                Mr. A. J. Townsend ..... Mayo, Fla.  
**Sunday School Officers**  
 Superintendent—E. J. Murphy, Jr. .... Rt. 1, Perry, Fla.  
**Member State Board of Missions**  
 Rev. Dewey Mann ..... Perry, Fla.

**CHURCH DIRECTORIES**

**Ministers Licensed This Year**

Athena—Roger Ezell ..... Rt. 2, Perry, Fla.  
 Madison—Earle Davis ..... Madison, Fla.  
 New Home, Perry—Kenneth Gaskin ..... Norman Park, Ga.  
 Perry First—Felix Zeigler ..... Stetson Univ., DeLand, Fla.

**Ministers Ordained This Year**

Madison—Kenneth Hudson, Mercer Univ. .... Macon, Ga.  
 Perry First—Carl Whiddon, Southeastern Seminary,  
   Wake Forest, N. C.  
   Leonard Cone, Southeastern Seminary,  
   Wake Forest, N. C.

**Students For The Ministry**

Beulah—Ben Duque, Valdosta State College ..... Valdosta, Ga.  
 Madison—Earle Davis, Stetson University ..... DeLand, Fla.  
                James Browning, F. S. U. .... Tallahassee, Fla.  
                Kenneth Hudson, Mercer University ..... Macon, Ga.  
 New Home, Perry—Olin Horton, Stetson University, DeLand, Fla.  
                Jimmy Persons, Stetson University, ..... DeLand, Fla.  
                Kenneth Gaskin, Norman Park Jr. College,  
   Norman Park, Ga.  
 Perry First—Felix Zeigler, Stetson University ..... DeLand, Fla.

**Pianist or Organist**

Athena—Mrs. Ida Mae Pridgeon ..... Rt. 2, Perry, Fla.  
 Bethel Creek—Miss Bettie Jean Singletary ..... Rt. 1, Mayo, Fla.  
 Beulah—Miss Patricia Ezell ..... Lee, Fla.  
 Brewer Lake—Mrs. Pearl Prine ..... Day, Fla.  
 Burton, Perry—Mrs. Elmer Allen ..... Rt. 1, Perry, Fla.  
 Central—Mrs. Tom Reams ..... Rt. 3, Monticello, Fla.  
 Cherry Lake—Mrs. Albert Gentry ..... Rt. 3, Madison, Fla.  
 Elizabeth—Mrs. Norman Hartsfield ..... Monticello, Fla.  
 Friendship—Mrs. Lou Ella Shaw ..... Perry, Fla.  
 Greenville—Mrs. S. B. Algeo ..... Greenville, Fla.  
 Hopewell—Mrs. Kathleen Lamb ..... Rt., Madison, Fla.  
 Lamont—Mrs. Hazel Westberry ..... Lamont, Fla.

Macedonia—Mrs. Ed Worthington .....	Lee, Fla.
Madison—Mrs. Vernon Ragans .....	Madison, Fla.
Mayo—Mrs. Sara V. Cook .....	Mayo, Fla.
Midway—Lex Webb .....	Rt., Madison, Fla.
Moseley Hall—Mrs. Juanita Cruce .....	Madison, Fla.
Mt. Gilead—Miss Carol Jo Aman .....	Shady Grove, Fla.
Mt. Olive—Mrs. J. R. Dykes .....	Rt. 1, Moultrie, Ga.
New Home, Madison—Miss Eloise Tuten .....	Rt. 1, Madison, Fla.
New Home, Perry—Mrs. Byron Tedder .....	Perry, Fla.
New Hopeful—Miss Jean Bodenstein .....	Madison, Fla.
New Macedonia—Mrs. Alice Taylor .....	Greenville, Fla.
Perry First—Mrs. Marion Warren .....	Perry, Fla.
Pine Grove—Miss Thomasena Morrison .....	Rt. 2, Madison, Fla.
Pisgah—Martha Newell .....	Perry, Fla.
Pleasant Grove, Lay.—Mrs. Audrey Buchanan .....	Mayo, Fla.
Pleasant Grove, Tay.—Russell Tedder .....	Shady Grove, Fla.
Riverside—Mrs. J. W. Lyons .....	Rt. 1, Mayo, Fla.
San Pedro—Sharon Wright .....	Rt. 1, Perry, Fla.
South Side, Perry—Miss Imogene Simons .....	Foley, Fla.
St. Johns—Doris Newman .....	Greenville, Fla.

**Librarians**

Athena—Mrs. Hazel Ezell .....	Rt. 2, Perry, Fla.
New Home, Perry—Miss Etheleen Register .....	Perry, Fla.
Perry First—Mrs. Alma Walker .....	Rt. 2, Box 841A, Perry, Fla.

**Director Audio-Visual Aids**

Madison—Rev. James T. Barber .....	Madison, Fla.
------------------------------------	---------------

**Other Ministers Belonging to Church**

Athena—Roger Ezell L M .....	Rt. 2, Perry, Fla.
Beulah—H. L. Stokes L M .....	Lee, Fla.
Brewer Lake—M. J. Fowler P O .....	Day, Fla.
Burton—A. H. Townsend I O .....	Perry, Fla.
Greenville—W. D. Kies R O .....	Greenville, Fla.
Lake Side—J. W. Johnson, P O .....	Rt. 1, Perry, Fla.
Howard Whitfield, I O .....	Rt. 1, Perry, Fla.
Lee—Jim Dryden, P O .....	Lee, Fla.
Macedonia—Hazel Woodard, I O .....	Madison, Fla.
Madison—Kenneth Hudson, P O, Mercer Univ. ....	Macon, Ga.
Earle Davis, L M, Stetson Univ. ....	DeLand, Fla.
Mayo—A. M. Parker, R O .....	Mayo, Fla.
Midway—L. C. Hicks, O M .....	Lee, Fla.
Norman Howard, L M .....	Madison, Fla.
Carl Webb, O M .....	Madison, Fla.
New Home, Perry—Kenneth Gaskin, S L M ..	Norman Park, Ga.
H. W. Hayes, O M .....	Perry, Fla.
Charles N. Paris, Jr., O M .....	Perry, Fla.
Pine Grove—A. M. Rowe, O. M. ....	Madison, Fla.
South Side, Perry—Cecil E. Poitevint, P .....	Perry, Fla.
Steinhatchee—Joseph Bell, R .....	Steinhatchee, Fla.

**RECORD OF BUSINESS TRANSACTED**  
at the  
**FIFTY-SEVENTH ANNUAL SESSION**  
of the  
**MIDDLE FLORIDA MISSIONARY BAPTIST ASSOCIATION**  
held with  
**MIDWAY BAPTIST CHURCH OCT. 4, 1956**  
**PLEASANT GROVE (Lay.) BAPTIST CHURCH OCT. 5, 1956**

1. Devotional led by Rev. Lorace Cothron, Pastor.
2. Welcome by Cecil Hicks.
3. Response by Rev. Alva Horton.
4. Call to order by Julian T. Maddox, Moderator.
5. Motion made and carried that the Messengers enrolled, the Officers of the Association and the Committee Chairmen constitute the working body for this Fifty-Seventh Session.
6. Program Committee Report given by the Clerk and motion made and carried that the program submitted, with such changes as may be necessary, be made the Order of Business for this session.
7. New Pastors recognized as follows: Rev. Lorace Cothron, Midway Church; Rev. S. J. Graham, Pine Grove Church, and Rev. Ben Duque, Beulah Church.
8. Visitors recognized were: Rev. W. T. Rawlings of Georgia; Rev. Franklin and wife, Suwannee Association; Rev. H. W. Hays of Perry.
9. Motion made and carried that reports be adopted without reading.
10. Dr. G. A. Leichter discussed the Fla. Baptist Foundation report and it was adopted.
11. Sunday School report read by Rev. James T. Barber, spoken to by him and adopted.
12. Children's Home report by G. F. Andrews spoken to by him and C. A. Sprowe, representing the Home, and then adopted.
- 12a. Motion made and carried that Cooperative Program and Missions reports be discussed at same time.  
They were spoken to by Rev. O. D. Moore and adopted.
13. The Moderator appointed James T. Barber and F. W. Cruce on Resolutions Committee.
14. Sermon by Rev. F. W. Cruce. Subject: The Faithful Father.

**Afternoon Session**

15. Devotional led by Rev. J. M. Sullivan.
16. Moderator appointed Rev. Dewey Mann and Rev. John R. Collins on Budget Committee.
17. Rev. D. O. Alderman, District Missionary, gave his report and same was adopted.
18. Motion made and carried that Temperance and Baptist Literature and Witness reports be filed with the Clerk and Dr. W. G. Stracener, editor of the Witness, speak to both reports. Both reports were then adopted.

14 MINUTES OF FIFTY-SEVENTH ANNUAL SESSION

19. Training Union report given by Association Director Horace Weaver and adopted.
20. Relief & Annuity report given by Rev. Lorace Cothron, spoken to by him and then adopted.
21. Music report given by Rev. F. A. Parker, Association Director, discussed by him and then adopted.
22. Report of Committee on Resolutions read by Rev. W. L. Price and adopted.
23. Motion to adjourn until 10 o'clock tomorrow adopted.

**Friday Morning Session**

**Pleasant Grove (Lay.) Baptist Church**

24. Devotional led by Rev. I. L. Barber, Host Pastor.
25. Welcome by Luther Thomas.
26. Response, Rev. Dewey Mann.
27. Moderator appointed Rev. C. F. Hooker and Rev. J. C. Moore on Committee on Time & Place.
28. Moderator, Rev. Felder Rowan, and Clerk on Committee on Digest of Letters.
29. American Bible Society report given by Rev. Felder Rowan spoken to by him and adopted.
30. Executive Committee report read by Clerk and after quite a discussion was adopted.
31. Motion to discontinue Fifth Sunday Meetings carried.
32. Treasurer's report given by Guy M. McClain and adopted.
33. W. M. U. report given by Association President, Mrs. Roy Milliron and after discussion by several, report was adopted.
34. Rev. Odis Murphy discussed Brotherhood work in the Association. Motion made and carried to include Brotherhood report in Minutes when received by Clerk.
35. Christian Education report given by Rev. I. T. Carter and spoken to by John E. Johns, representing Stetson University, Rev. Dewey Mann for Baptist Bible Institute and Rev. J. C. Moore. Report then adopted.
36. Rev. J. C. Moore gave the report on Baptist Hospitals and he and Rev. C. F. Hooker spoke to the report, which was then adopted.
37. Report on Evangelism was given by Rev. Alva Horton and adopted.
38. Rev. Walter Bailey and family from Ebenezer Church in Fla. Association, were recognized.
39. Sermon by Rev. B. A. Rakestraw. Subject: A Call to Duty.

**Afternoon Session**

40. Devotional led by Rev. C. T. Hall.
41. Budget Report read by Rev. Odis Murphy. Spoken to by him. Rev. F. W. Cruce offered an amendment to the report as follows, give the W. M. U. \$327.00 as requested and they turn all moneys collected by them to the Association treasurer. The amendment was adopted, also the report.
42. Motion made and carried Moderator appoint a committee to study and report to next session a different way of financing the budget. Committee: Rev. Alva Horton, Rev. F. W. Cruce, and Rev. James T. Barber.

43. Rev. J. M. Sullivan gave the report on Our Beloved Dead and it was adopted.
44. Report on Assembly Grounds by Rev. Dewey Mann and adopted.
45. Stewardship report given by Rev. Dewey Mann and adopted.
46. Digest of Letters report given by Rev. John R. Collins and adopted.
47. Resolutions Committee report by Rev. W. L. Price and adopted.
48. Report on Time and Place by Rev. F. W. Cruce adopted.
49. Report of Committee on Nominations read by Rev. M. J. Fowler and adopted.
50. Vote of thanks was extended to Rev. F. A. Parker for his work as Association music director.
51. Rev. F. W. Cruce offered the following amendment to Article 9 of the Constitution of the Middle Fla. Baptist Association: strike out the words "six laymen" and insert in lieu thereof "a lay member from each Church". Amendment was adopted.
52. Motion made and carried that Clerk inform each Church of the above change and ask them to nominate the person from their Church who shall be their Executive Committee member and that upon receipt of such names they shall be presented to the Executive Committee for election.
53. Radio and Television report read by Clerk and adopted.
54. The following officers were elected without any opposition:  
 Rev. Francis W. Cruce, Moderator.  
 Rev. W. L. Price, Vice-Moderator.  
 Guy McClain, Treasurer.  
 Carl W. Burnett, Clerk.
55. Motion made and carried to adjourn.

**MESSENGERS ENROLLED**

- Athena—J. E. Ezell and wife, Rev. W. L. Price.  
 Bethel Creek—Mrs. Edna Farnell, Mrs. Beulah Snipes, Mrs. Annie Williams.  
 Beulah—Fred Holder, Frank Stokes.  
 Brewer Lake—T. A. Bell, Edgar Snipes, Mrs. Lola Plymel, Mrs. Clyde Studivant, Mrs. Armintha Rodgers.  
 Burton, Perry—Mrs. Ivy Grantham, Mrs. W. Y. Hunter, Mrs. Anna Lee Bishop, Mrs. C. F. Hooker, Mrs. C. C. Moore, E. G. Beal.  
 Central—Rev. and Mrs. D. Kilpatrick, Mrs. John L. Bishop, Mrs. Reba Schierhorst.  
 Cherry Lake—Mrs. Ben Williams, Mrs. Geo. Burnett, Jr., Mrs. Sam Sale, Mrs. Eob Milner, Mrs. Walter Roberts, Donnie Barnes.  
 Elizabeth—Mrs. J. G. Walker, Mr. and Mrs. A. W. Wilder, Mr. and Mrs. George DeMott.  
 Friendship—Mrs. Lena Murphy, Mrs. C. P. Sheffield, Mrs. A. R. Roberts, Mrs. Gloria Holmes, Mrs. Lou Ella Shaw.  
 Greenville—Rev. and Mrs. J. T. Maddox, Mrs. E. W. Handley, G. F. Andrews, Rev. W. D. Kies.

- Hopewell—Mrs. Velma Wynn, Bill Lamb, Jack Wynn, Mrs. Jewell Walker, Mrs. Annie Bell Walker.
- Lakeside—J. R. Ward, Rev. F. W. Cruce, Mrs. Susan Cruce, Mrs. Corine Carlton, Mrs. Audie Coffman.
- Lee—Jessie Sullivan, Quinten Dryden, Mrs. Margie Malone, Mrs. Ellie Webb.
- Lamont—D. R. Campbell, Sr., and wife, Rev. and Mrs. D. Kilpatrick.
- Macedonia—L. B. Welch, Finley Day and wife, Mrs. Audrey Williams, Mrs. Trudie Webb.
- Madison—Mrs. Stanley Baxley, Mrs. J. A. Zipperer, Rev. James T. Barber, Mrs. Roy Milliron, Mr. and Mrs. Albert Williams.
- Mayo—Mr. and Mrs. Guy M. McClain, Rev. A. M. Parker, Mrs. J. I. Radford, Rev. S. V. Cofield.
- Midway—Mrs. W. H. Dickey, Mrs. Sidney Jordan, Mr. and Mrs. M. J. Hicks; Sr.
- Moseley Hall—J. J. Cruce, Sam Andrews, Mrs. Sue Cruce.
- Mt. Gilead—Mrs. W. M. Aman, Margarete Russell, Mrs. A. E. Sever, Mrs. T. A. Goodman.
- Mt. Olive—Mr. and Mrs. Garnez Dickey, Mr. and Mrs. Kermit Thomas, Mrs. Lois Albritton.
- New Home, Mad.—Mrs. Albert Tuten, Mrs. Eddie Bass, Mrs. Lucian Floyd.
- New Home, Perry—J. F. McCall, Mrs. Alma McClain, Mrs. Byran Tedder, Rev. Alva Horton.
- New Hopeul—Mr. and Mrs. Willie Rutherford, Mr. and Mrs. George Young.
- New Macedonia—Mr. and Mrs. Will Blanton, Mrs. T. W. Herring, M. M. Pickles.
- Oakland—Mr. and Mrs. C. M. Young, Mr. and Mrs. Ralph Whid-  
don, Eunice Leggett.
- Perry First—T. R. Bevis, W. E. Inman, W. B. Martin, Mrs. W. B. Lundy, Mrs. J. L. Burch, Mrs. Jeanette McLeod, Mrs. Ada Mills, Mrs. Polly Howle, Mrs. Agnes Honey.
- Pinetta—Mr. and Mrs. Lamar DeLoach, Tom Drew, Mr. and Mrs. Cecil Crafton, Mrs. Florence McMillian.
- Pine Grove—Arthur Cruce, W. O. Raines, Frank Davis.
- Pisgah—Mrs. Mattie Newell, Mrs. Carrie Blue.
- Pleasant Grove, Lay.—Mrs. Abbie Cates, Mrs. Annie Mae Buchanan, Mrs. Louise Hart, Mr. and Mrs. Luther Thomas.
- Pleasant Grove, Tay.—Rev. C. J. Lewis, Miss Nannie Lewis, Mr. and Mrs. S. W. Tedder.
- Riverside—Mr. and Mrs. W. O. Lyons, Mr. and Mrs. Luther Hart.
- San Pedro—Rev. and Mrs. J. M. Sullivan, Mrs. Edith Wright, Sharon Wright, Miss Ethel Lee Hunter.
- Sirmans—Mr. and Mrs. Kelly Bailey, Miss Laverne Bailey, Mrs. Carrie Stokely.
- Southside Perry—Mrs. Roy Dennis, Mrs. J. O. Simons, Mrs. C. M. Parker, Mrs. Hattie Sumrall, Mrs. C. T. Hall.
- St. John's—Mr. and Mrs. W. B. Wynn, Norman Newman, Mrs. Doris Newman.
- Steinhatchee—Mrs. Stewart, Mrs. Ross, Mrs. Hires, Mrs. Tillman.



**RESOLUTION**

WHEREAS, The Pleasant Grove (Lay.) Baptist Church has invited the Middle Florida Baptist Association on the second day of our meeting, and

WHEREAS, they have provided food in abundance and to spare, and fellowship that saith that the Lord is here;

BE IT RESOLVED that this Association express thanks by standing vote.

BE IT FURTHER RESOLVED that this Resolution be spread upon the Minutes.

W. L. PRICE, Chairman  
JAMES T. BARBER  
FRANCIS W. CRUCE.

**RESOLUTION**

WHEREAS, the Midway Baptist Church has graciously invited and wonderfully entertained the Middle Florida Baptist Association on this 4th day of October, 1956, And;

WHEREAS, our hearts have been blessed by the Christian fellowship and our physical bodies strengthened by the bountiful food:

THEREFORE, BE IT RESOLVED that this body express its thanks and appreciation to this Church by a rising vote of thanks.

BE IT FURTHER RESOLVED, that this resolution shall be spread upon the Minutes of this Association.

Respectfully submitted,  
W. L. PRICE, Chairman  
JAMES T. BARBER  
FRANCIS W. CRUCE.

**REPORT OF THE MIDDLE FLORIDA ASSOCIATION,  
MUSIC DIRECTOR**

December 18th, 1955, Christmas Carol Sing held with the Friendship Baptist Church, several churches represented with approximately 150 present.

February 22nd, 1956, Associational Festival held with the Greenville Baptist Church, with an overflow crowd, with 7 choirs and 3 Leaders participating.

March 2nd, State Festival held at First Church, Tallahassee, with five choirs from Middle Florida Association.

April 15th, 1956, Hymn Sing held with the Lakeside Baptist Church, five churches represented with fair crowd.

July 15th, 1956, Hymn sing held with Pinetta Baptist Church with several churches represented, and large crowd.

Next Hymn Sing set for 2nd Sunday in October, 1956, at the Cherry Lake Baptist Church.

There were three Music Schools held in the Association.

We trust that churches as a whole will take more interest in the Music of the Churches than they have in the past.

Respectfully submitted,

F. A. PARKER Associational Music Director.

### REPORT ON STATE MISSIONS—1956

Year by year we try to get our people to pause long enough to study conditions here in our beloved, favored Florida. I can think of no more arresting paragraph than to repeat again what was spoken at the Centennial Celebration two years ago at Daytona Beach:

“Florida is more of a virgin mission field today than it was 50 years ago. At the present time, it is reported that 1,608 new families come into Florida every seven days. It is further reported that Florida’s population is increasing in the amount of 150,000 to 200,000 new people each year. This calls for at least 200 new missions to be started each year. In no year should less than 50 churches be organized from these missions, in order to take care of the rapid growth in population within this great state.”

Now what has the Florida Baptist Convention done to meet the need of this unprecedented opportunity? For one thing, it has set aside and spent more than \$230,000 in the past three years in buying sites for new missions. Now mind you, this has been the Convention’s part, but at least four or five times what the Convention has spent, the sponsoring churches have spent in getting these new missions and churches started. We must, as a Convention, spend not less than \$150,000 next year for this share of our work alone.

While we are putting great emphasis on new work, we are not neglecting our well established departmental and institutional activity. In 1954-55, we spent on Stetson University, for current operations, capital needs, and ministerial education, \$338,-120.85; on the Florida Baptist Children’s Home, for current support and capital outlay, \$193,997.96; and for Field Missions, \$363,-614.34, of which \$236,838.09 was spent for all departmental expense. Thus you see that we have a well balanced program.

Fellow members of this association, the results of our state mission program cannot be tabulated. Suffice it to say that God is blessing our work, and we are making remarkable strides, all to His glory and praise. We would call your attention to this additional emphasis each fall, our special State Mission Offering, sponsored through the W. M. U. and State Convention, which is a joint effort. What we are asking is that every individual in every church be given an opportunity to understand our mission program and urged to have a part with us in reaching our own state. The future for Florida is as bright as the promises of God. What we need is more laborers, better cooperation, more faith, and greater vision. Let’s move together, for Baptists go forward when they go together.

REV. C. F. HOOKER.

### HOME MISSIONS REPORT

The 1956 Report of the Home Mission Board indicated that 1955 was a year of "unprecedented growth and achievement." Special emphasis was placed on evangelism. The Convention-wide crusade, led by C. E. Matthews and other members of the Home Mission Board's evangelistic staff, in cooperation with all other agencies and state leadership, netted the greatest results in baptisms in the history of the Convention. The Board's income for the year was \$2,134,340.86.

Church loans were made to 237 churches and surveys made with approval for loans to be consummated later. At the end of the year 604 loans in the sum of \$5,826,970.03 were outstanding.

Statistics for 1955 indicated at the close of the year 1,493 missionaries (including 388 summer student missionaries), a gain of 151 in personnel; 37,475 professions of faith; 105,426 sermons and addresses by missionaries; 4,423 dedications for special service; 725 new missions started; 410 new churches constituted; and 430 Southern Baptist chaplains in service. There were 15,249 conversions reported by chaplains, not listed in missionary statistics.

#### Advancement in 1956

During 1956 changes in personnel included the selection of Leonard Sanderson as secretary of the Department of Evangelism; Leland H. Waters as executive assistant; J. T. Gillespie to direct the Rural Church Program; M. Wendell Belew in City Missions, the downtown church, and the church-centered mission program; and William B. Mitchell succeeded Frank H. Halbeck in the Department of Jewish Evangelism.

Major emphasis in the "4-Year Conquest for Christ" for 1956 is on church extension, with a goal of 2,666 new churches. Surveys reveal that there is specific need for 10,000 new churches now. New churches and new meetinghouses in which to worship mean more workers, more converts, and more money for the promotion of world missions. The Board is girding its forces in preparation for the Convention's emphasis in 1957 on World Mission Year.

REV. C. F. HOOKER.

### FOREIGN MISSION REPORT

"What happens to missions around the world depends directly upon what happens to missions in the local church," Elmer S. West, Jr., secretary for Missionary Personnel, told the Foreign Mission Board at its April meeting. "When concern for missions is cultivated, information is shared, prayers are offered up to God . . . lives will be dedicated, money laid on the altar and, as a direct result, in some far-away place the gospel will be heard and another life will find Christ. Missions is every Christian's business."

Mr. West estimated that it will take 125 missionary appointments each year for eight more years to reach the Advance goal of 1,750 missionaries. With 52 missionaries appointed the first

five months, he expects to reach the goal of 125 in 1956. Appointments for 1955 totaled 104. The Board has 1,058 active missionaries as of June 1, 1956. They serve in 200 centers in 35 geographical areas.

Of 500 new missionaries requested by the Missions in the various areas, missionary preachers top the list. During 1955 the Missions reported 24,342 baptisms in the 2,250 churches and 3,880 outstations that are affiliated with them; total church membership is 237,154. (A reasonable estimate of members in China brings the figure to 350,154.) Working with 130 missionary pastors are 1,541 national pastors.

The Missions request 26 nurses, and there are also requests for doctors and technicians. At present, 87 medical missionaries in 16 countries work in 13 hospitals, 30 clinics, and 10 dispensaries, which reported 240,411 patients in 1955. Two new hospitals were dedicated during the year—a four-story, 100-bed hospital in Japan on July 12, 1955, and Wallace Memorial Hospital in Korea, Nov. 29, 1955. Land has been purchased for hospitals in Mexico and Indonesia.

The need for missionary teachers is continually growing. Among missionaries on the field in 1955 were 229 teachers working in 32 areas with 3,750 national teachers in 791 schools enrolling 115,832 students. Among the schools are 22 theological seminaries with 896 students. A new seminary was opened during the year in Southern Rhodesia with a classroom building completed and a chapel under construction. Construction on a seminary building in Korea is in progress, and land has been purchased in the Bahama Islands for a Bible Institute that has been meeting in the mission residence. Seminaries in Formosa, Philippines, and Thailand graduated their first classes in 1955.

Missions in 21 areas maintain publication work. They reported for 1955, publication of 195,000 Bibles, 483,435 books (155 titles) 4,034,994 pamphlets, and 2,194,537 periodicals (128 titles).

The Board has voted to enter two new fields—Pakistan and Tanganyika—as soon as personnel is available.

With the gain in the overseas staff has come a gain also in the home office staff. Property was purchased early in 1956 for a new headquarters building in Richmond. Meanwhile, temporary quarters for part of the staff have been rented to supplement space at the present headquarters.

Eugene L. Hill joined the headquarters staff Jan 1, 1956, as secretary of the Department of Missionary Education and Promotion, filling the vacancy created when Frank K. Means was elected secretary for Latin America in October, 1954.

The Commission had a net gain of 15,300 in circulation for the year 1955. Its circulation the first five months this year averaged 120 795.

The total income of the Foreign Mission Board during 1955 was \$11,287,775.72. Of that, \$5,311,630.83 came from the Cooperative Program. Receipts from the Lottie Moon Offering, May 1, 1955, to May 1, 1956, totaled \$4,628,691.03.

C. F. HOOKER.

### REPORT OF THE FLORIDA BAPTIST CHILDREN'S HOME

For more than half a century, Florida Baptists have maintained a Children's Home. The services of our Home are divided into three parts. We provide boarding homes for those who need more personal attention than they can get in group living. We give financial assistance through Mother's Aid to those whose mother is a suitable person to rear her children. This allows the child to remain in his home and grow up in a family setting. More than three-fourths of our children live on the campus in Lakeland.

We are enlarging our program of child care. The Convention at its meeting in Lakeland last year, voted to establish a branch of the Florida Baptist Children's Home in the greater Miami area. The Allapattah Baptist Church of that city gave the Home five acres of land at Kendall, ten miles south of Miami. We expect to begin construction of the buildings this fall or winter. When it is completed it will accommodate forty-eight to sixty children.

We are grateful for the help you have given through the Cooperative Program, through your Sunday Schools and churches, and as individuals. We earnestly request that each church in this Association take an offering for the Home at Thanksgiving or at a time that suits you best. This offering is vital to the welfare of dependent children.

We also ask that you give birthday offerings and as individuals help the Home through your personal program of giving, particularly in your will.

Let us not forget that care of dependent children is an important part of our Christian services. Our Homes have made opportunities possible for hundreds of boys and girls who have profited greatly by them. They have been trained to earn their living. Many have had their health restored. Some have graduated from colleges and universities and everyone has been taught the Christian principles of life. All these benefits to our children were made possible by the gifts of Florida Baptists who received the greater blessing. We remember that the Lord Jesus himself said, "It is more blessed to give than to receive."

Respectfully submitted,

Children's Home Committee,  
G. F. ANDREWS, Chairman.

### REPORT OF THE RADIO AND TELEVISION COMMISSION

The Radio and Television Commission came into being in 1938 when a radio committee was appointed to study the potential for evangelism which lay in radio. In 1946 the Committee was renamed the Radio Commission and put into the Cooperative Program. The Convention authorized the addition of "television" to the agency's title in 1954 and in 1955 approved a headquarters' move from Atlanta, Georgia, to Fort Worth, Texas.

### **Baptist Hour Growth**

The Baptist Hour, official radio broadcast of the Southern Baptist Convention, celebrated its fifteenth anniversary and 100,000th broadcast this year. Produced by the Commission, the Baptist Hour has grown with the denomination until today it is carried on 400 radio stations in 33 states and several foreign countries. It is now prepared on tape at the Fort Worth offices and distributed to all these points in and beyond the bounds of the Convention.

### **"This Is The Answer"**

As a fitting observance of its success on the radio, the Radio and Television Commission launched a 13-film series for television on April 8, 1956. The series is called "This Is The Answer". Through the medium of television additional millions will be reached with the gospel message. Southern Baptists thus climaxed 15 years of progress in the field of electronic evangelism.

Eased on parables of the Bible, the television series reached a viewing audience of 10 million individuals each week. It is expected to grow rapidly and each film will reach an additional church audience in rentals through the Baptist Book Stores.

Further evidence of progress will be seen in a new Commission headquarters building to be erected in Fort Worth, Texas, during 1957-58.

### **Represents The Denomination**

As representative for Southern Baptists on nation-wide radio and television networks, the Commission is rendering valuable service in making known to the nation at large what Southern Baptists stand for.

Production of two television programs and six radio programs for CBS and NBC has served to point up the fact that Southern Baptists have taken their place beside the National Council of Churches, Protestant groups, the Jewish Council and the Catholic organizations which produce radio and television programs.

CARL W. BURNETT.

## **RELIEF AND ANNUITY REPORT**

### **Associational Report**

The 38th year of service for the Relief and Annuity Board closed in July of this year. Organized in 1918, with a \$100,000 grant from the Sunday School Board, The Board has worked continually to enlarge its services to Southern Baptist pastors and layworkers.

Benefits paid in 1955 by the Relief and Annuity Board totaled \$1,859,691.26. Of these benefits, \$1,288,100.89 was paid out to

retired ministers and widows of ministers; \$219,460.39 to lay-workers employed by boards, colleges, churches, and other agencies; \$319,820.87 in relief grants, and \$32,309.11 in other benefits. Approximately 4500 beneficiaries were recipients of these benefits.

There is a definite need for special gifts or endowments for a permanent relief reserve. Nearly all the funds of the Relief and Annuity Board are being held in trust for Southern Baptist preachers and workers who have been sending in monthly payments to insure security for their old age.

**There is currently available little more than \$300,000 for relief needs.** That is the amount that Cooperative Program and special gifts from churches provide. This amount is used up to meet current needs, resulting in a deficit in relief funds. That is why there is a need for special endowment for relief, since the money the Board has in trust to meet future annuity payments cannot be used to meet current relief demands.

#### The Big News

Big news of the year is the inauguration of a new group program for all retirement plan members . . . low cost death benefits. Family Benefit Endorsement will go into effect for all retirement plan members January 1, 1957, provided enough members agree to take out this additional protection.

The Endorsement offers lump sum death benefits, with double the benefit in case of accidental death, and premium waiver in case of disability. No physical examination will be required.

Until January 1, 1957, all those under age 65 will be accepted. Thereafter, only those under age 60 will be accepted. Low cost of benefits is possible because this is term protection ceasing at age 65. For instance, the cost of the Family Benefit for a man 20-25 is 28c per thousand; for a man 36-40, 52c; for a man 51-55, \$1.43 per month. Cost of benefit increases each five years until age 60, when it increases each year until age 65.

Special arrangements have been made for ministerial students who have no paid church relationship. They may take up to \$2,000 of the Family Benefit Endorsement, provided they agree to come into the retirement plan when they are eligible to do so.

It should be stressed that only those who hold retirement plans with the Relief and Annuity Board will be eligible for the Endorsement. Dues must be up to date in the retirement plan before they will be accepted in the Family Benefit Endorsement. If you are interested, write for information to the Relief and Annuity Board.

Administrative officers of the Relief and Annuity Board are: R. Alton Reed, executive secretary, R. S. Jones, Floyd B. Chaffin, and L. T. Daniel, associate secretaries, Fred W. Noe, treasurer, Owen Henley, assistant director of investments, and Mrs. Mable McCartney, registrar.

### REPORT ON TEMPERANCE

Being purchased by the precious blood of the Lord Jesus Christ, I can accept and endorse the pledge of the late honorable Abraham Lincoln. Quote:

"Whereas the use of alcoholic liquors as a beverage is productive of pauperism, degradation and crime, and believe it is our duty to discourage that which produces more evil than good, we therefore pledge ourselves to abstain from the use of intoxicating liquors as a beverage."

Some people believe that?:

A drink of an alcoholic beverage will cure a cold. This is not true. Doctors have found that alcohol is not a cure for any disease.

The public reports show that about 55 per cent of the auto deaths are caused by drinking drivers, and that a majority of the major crime of our state today is committed by users of intoxicating beverages.

Let us treat this alcoholic problem with a few passages from the scriptures.

#### What The Bible Says:

About "jolly good fellows" and "treeting". "Woe unto him that giveth his neighbor drink, that putteth thy bottle to him and maketh him drunken". (Which means voting it to him as well as handing it to him.) Hab. 2:15.

What about prosperity founded on wrong? "Woe unto the crown of pride of the drunkard of Ephraim, and to the fading flower of his glorious beauty, which is on the head of the fat valley of them that are overcome with wine.

Behold the Lord has a mighty and a strong one as a tempest of hail, as a destroying storm, as a tempest of mighty waters overflowing, will He cast down to the earth with his hand. The crown of pride of the drunkards of Ephraim shall be trodden under foot." Isa. 28; 1-3.

#### What Is The Christian Law of Brotherhood?

It is good not to eat flesh, nor to drink wine, nor to do anything whereby thy brother stumbleth, or is offended, or made weak.—Rom. 14-21.

#### What Does It Say About Electing Saloon Advocates to Office?

"The wicked walk on every side when the vilest men are exalted. Have no fellowship with the unfruitful works of darkness, but rather reprove them."—Psa. 12-8.

#### What Does It Say About Our Internal Revenue System?

"Woe unto them that decree unrighteous decrees, and to the writers that write perverseness; to turn aside the needy from justice and to rob the poor of my people of their right; that widows may be their spoil and that they may make the fatherless their prey."—Isa. 10; 1-2.

#### What Does It Say About Raising Revenue from the License of Wrong?

"Woe unto him that buildeth a town with blood and estab-



lisheth a city by iniquity."—Hab. 2; 1-2.

**What Bible Battle Cry Should We Adopt?**

"I looked and rose up; and said unto the nobles and to the rulers, and to the rest of the people, Be ye not afraid of them: remember the Lord, who is great and terrible, and fight for your brethren, your sons, and your daughters, your wives and your houses."—Neh. 4;14.

Let us as Christians take a stand for that which is right and live for it. How can we take this stand?

Through a more complete consecration to Christ and His Cause.

Respectfully submitted,

BARTOW A. RAKESTRAW.

**REPORT OF FIELD SECRETARY FOR DISTRICT THREE—1956**

Days spent on field 327; other fields 39; total 366.

Miles traveled on field 21,491; other fields 4,095; total 25,586.

Churches visited 127; Missions visited 15; Pastor's Conferences 444; Associational meetings 27; State meetings 2; Convention-wide meetings 1; Ccmmittee meetings 78; Prayer meetings 42; Classes taught 23; Revivals Evangelistic 3, Stewardship 6; Tracts and Scriptures given 6,500; Sermons 235; Addresses 16; Other services 121; Soul-winning contacts 91; Letters mailed 686; Study courses taught 5; Assemblies 2; Department conferences 1; Professions of faith 17; Letter 15; Total additions 32; Rededications 137; Community surveys 7; New churches organized 1; Church budgets made 3; Tithers secured 130; Cooperative Program put in budget 2; Ordinations 2; Church lots purchased 2; Church improvements made 2; New buildings begun 8; Churches sponsoring a mission 3; Pastor contacts arranged 43; Ground breaking for buildings 1; Corner stone laying 1; Marriages 1; Home Mission Week at Ridgecrest, Department Conference at Panama City; State Evangelistic Conference, Public relations conferences 6; Helped with School of the Prophets, Funerals 2; Leadership Conference 3.

District Three is comprised of three associations, Suwannee, Middle Florida, and Florida, having a total of 108 churches and 2 missions. Every church responded to some phase of our work, but one failed to respond to the call of World-Wide Missions through the channel of the Cooperative Program.

Your Field Secretary is grateful for the fine response and cooperation that makes this report possible.

Respectfully submitted,

D. O. ALDERMAN,

534 West Lafayette Street

Tallahassee, Florida

### BROTHERHOOD REPORT

For the year 1955-1956, the Associational Brotherhood had four meetings at the locations listed below:

1st Quarter: Madison Baptist Church. Total present, 112; Offering \$49.67.

2nd Quarter: Macedonia Baptist Church. Present, 111; Offering \$61.70.

3rd Quarter: New Home Baptist Church. Members present, 102; Pastors present, 14; Visitors present, 7; Total Present 123; Offering, \$66.75.

4th Quarter: Pinetta Baptist Church. Members present, 97; Pastors present, 15; Visitors, 6; Total present 118; Offering, \$70.66.

Average attendance for the year: 116.

Average collections for the year: \$62.20.

From the above statistics, you can see that the Brotherhood of the Middle Florida Baptist Association has not done too well. Out of the 38 churches in the association, there were only four that sent in a report of their Brotherhood in order that a consolidated report could be made. It seems that there is a lack of interest in our Brotherhood organizations. Are our Pastors behind our Brotherhoods as they should be? Are our presidents just figureheads in our Brotherhoods? Do our Program Vice-Presidents plan programs that are inspirational and interesting? Most important, are all the men of our Brotherhoods inviting lost men and boys to our local meetings as they should?

I hope and pray that in this new year that the men of the Brotherhoods will get behind their local presidents and their associational president and work with them in order that lost souls will be won to Christ.

ELLIS W. LIPSCOMB.

### STEWARDSHIP

There are two basic foundations for Stewardship: The first is the giving of oneself first to God. The Scripture says, "They first gave themselves to the Lord." The second, is love for others. The Bible says, "If we have not love, the Gift means nothing." Malachi 3:8-10, tells us who is to tithe and make an offering-- God's people. He makes a plea for all the tithe. There are some things a Christian should not give to. The Tithe belongs to the Lord.

The purpose of tithing: There might be meat in God's House for the whole world; enough to take care of God's business at home and unto the utter-most part of the world.

He then promises the blessing. Do not wait until you are able to tithe. Tithe in order that you might be able to live and enjoy living.

DEWEY MANN.

### COOPERATIVE PROGRAM REPORT

Throughout our Convention territory, Southern Baptists continue to look upon the Cooperative Program as the lifeline for missionary, educational, and benevolent work. Now in its 31st year, Southern Baptists used the Cooperative Program in 1955 to channel over eleven million dollars into Conventionwide causes, including the support of our seminaries, ministerial relief, home and foreign missions, etc. This eleven million does not include the amount retained by the states for state mission work. During 1955 over thirty-five million dollars was given for all Cooperative Program work, both state and Conventionwide. During the year ending September 30, 1955 Florida Baptists contributed to world missions through the Cooperative Program \$1,584,450.18. (The figure for 1956 will be given at the annual associational meeting by the speaker representing the Cooperative Program.)

The total amount given for Conventionwide causes jumped from \$10,739,497.00 in 1954 to \$11,648,841.09 in 1955, or an increase of 8.4%. There is a disturbing note in our general giving record however. While the total dollar gifts have risen through the years, the total percentage going to World Missions has not risen. In 1934 17.25% of the total gifts went to missions. In 1949 the percentage was 17.56%, and 1955 the percentage was 17.43%.

In 1934 we said this low percentage was due to pressing needs at home occasioned by the depression. We apologized for it again in 1949 by saying our churches were catching up on building programs delayed by the war. But, how are we to explain the continued drop to 17.43% in a booming year like 1955? Why are our churches still in the depression as far as their percentage of mission gifts are concerned? Is lack of concern the answer? When we care—we will share!

**World Mission Year** begins in October, 1956, continuing through all of 1957. It is hoped the proper observance of **WORLD MISSIONS YEAR** will enlarge our concern so as to increase not only our dollar but also our percentage gifts through the Cooperative Program.

#### **The Southern Baptist Convention Therefore Recommends:**

1. That every church launch World Missions Year by observing a World Missions Week this October 28-November 4, or nearest convenient date. Suggestions for this week will be found in the World Missions Handbook which is the June-July issue of the Baptist Program, mailed to all pastors. Also order **tract**. World Missions Week: 1956, from your state secretary.
2. That every church adopt a worthy budget, give through the Cooperative Program on a percentage basis, and increase this percentage annually, working toward a division of at least 50% through the Cooperative Program.

REV. JOHN R. COLLINS,

### REPORT OF EXECUTIVE COMMITTEE

Your Executive Committee met four times during the year. Reports from the various departments were received each time.

The Executive Committee received from the W. M. U. a request that their budget be increased to the amount that they are asking for, but inasmuch as the Executive Committee does not have authority to adopt a budget, it recommends that the Association give consideration to the budget request by the W. M. U. when same has been properly presented to the Associational Budget Committee.

The Executive Committee recommends that the President of the W. M. U. be listed by the Nominating Committee and presented to the Association for their approval as other Associational Officers are. This is desired so that the W. M. U. will feel that they are actually a part of the Associational work as other departments are.

The Executive Committee recommends to the Association that they put on their agenda of events for discussion the subject "Associational Calendar of events or activities," and if adopted that each church be furnished with one of these calendars.

The Executive Committee further recommends that the Association for the purpose of consideration, place on their agenda the following: An amendment to the Constitution, Article 9, so that each church would be a member of the Executive Committee as well as a layman from each church. It was the thinking of the Committee that each church would nominate a lay member from each church that would serve on the Executive Committee.

The Committee recommends that the new dates for our Association be brought before the Committee on Time and Place to be presented to the Association for their approval or disapproval.

T. P. McLEOD, JR.

### REPORT ON EVANGELISM

It is with gratitude to God that we are able to report that the year of 55-56 was the greatest year in Evangelism in the history of Middle Florida Baptist Association. Our Home Mission Board had asked us to have simultaneous revivals on the Associational level this year.

In Taylor county our churches had a county-wide revival in Perry, conducted August 26 through September 9, with the E. J. Daniels Revival party of Orlando, Florida, helping us. This Revival proved to give our churches the greatest spiritual uplift that we had felt in any time of our experience. Over 300 people walked the path of conversion, many moved their letters, great numbers came for consecration and over 600 signing Tither's cards. A backward look:

Number of converts for 1953: 311; for 1954, 269; for 1955, 297; and 1956, 413. By letter, 357 in 1956 report.

The emphasis in our state evangelistic conference in Jacksonville in January was on conservation of our revivals. It is hoped that all new converts will be enlisted in the service of our Christ through our churches.

ALVA HORTON.

## MIDDLE FLORIDA BAPTIST ASSOCIATION

## SOURCE OF INCOME

Brotherhood offerings (5) .....	\$ 312.68
Church Dues .....	1,980.73
Fifth Sunday Meetings (1) .....	23.07
Sale of Training Union Books (1) .....	34.09
Refund of light bill for Baptist Assembly Grounds .....	27.62
	<hr/>
	\$2,378.24
Balance brought forward Oct. 1, 1955 .....	1,794.85
	<hr/>
	\$4,173.09

## EXPENSE

10-7-55 Greenville Church—entertaining Associational Meeting .....		
10-7-56 Elizabeth Church—entertaining Associational Meeting at \$50.00 per day .....	100.00	
9-7-56 Midway Church for entertaining Association Pleasant Grove (Laf.)—entertaining Association at \$100.00 per day .....	200.00	
4 Brotherhood meetings at \$100.00 per meeting	400.00	
B. T. U. Budget .....	181.33	
(They have a credit of \$34.09 by sale of books)		
W. M. U. Budget .....	150.00	
Incidentals:		
5th Sunday Programs .....	\$ 6.50	
Rev. C. T. Hall, Baptist Assembly Grounds .....	100.00	
Guy M. McClain, Postage as Treas. ....	5.00	
Penny Weaver, trip to Deland .....	29.74	
Suwannee Valley Electric Corp., Advance of bill .....	27.62	168.86
Clerk's Salary .....		175.00
Treasurer's Salary .....		100.00
Printing Minutes .....		356.00
Associational Sunday School, Rev. Barber .....		13.02
Moderator-Vice Moderator expenses:		
Rev. Maddox \$8.50; Carl Burnett \$13.82 .....		22.32
		<hr/>
TOTAL .....		\$1,866.53
Total income accounted for .....		\$4,173.09
Less total expenses .....		1,866.53
		<hr/>
Balance as of Oct. 1, 1956 .....		\$2,306.56

GUY M. McCLAIN, Treas.

### AMERICAN BIBLE SOCIETY

A Chinese student, during World War II when Bibles were scarce in his country, made this earnest request: "We students want to know Jesus. We must have the Book." Another thoughtful Chinese student, talking with his missionary teacher, said: "Your English Bible speaks to my head, but my Chinese Bible speaks to my heart."

These words express two missionary principles which are true in all lands. 1. People must have the Bible because it presents Jesus Christ, the one hope of men and nations. 2. Each person must have the Bible in his own language because it speaks to his heart as no other language can speak.

The Bible is a missionary. It can go where no human missionary can go, it can remain after any missionary has gone and keep on speaking to men's hearts.

**The American Bible Society** aids in Bible translation, publishes the Scripture without note or comment and distributes them without profit, usually below cost. For the blind it supplies in braille and talking record. The American Bible Society serves every form of Southern Baptist mission work around the world.

**During 1955** the American Bible Society did the following:

1. Helped to publish Bibles in Russia by giving to Russian Baptist leaders mats made from our printing plates. They are using them to print 50,000 Russian Bibles.
2. Helped the Japan Bible Society publish the full Bible in colloquial Japanese, the every day language easily understood by all the people. This opens the Book to millions of new readers.
3. The Society donated 1,397,100 Scripture volumes for distribution by Chaplains to our armed forces, providing a vital link between the home churches and the men in service.
4. Distributed throughout the world almost 15 million volumes of Scriptures.

**Southern Baptists Support the work** because,

1. The Bible Society serves mission work and Southern Baptist missionaries depend on the Society for the Scriptures they need for distribution in their own work. For that reason alone Southern Baptists ought to give to the American Bible Society.

2. In 1955 Southern Baptist churches again broke their own record by giving \$115,631 to their Bible Society. Southern Baptists were exceeded only by the Methodist gifts of \$139,151. Gifts from all denominations totaled \$304,998.

The help of every Southern Baptist Church is needed. Has your church given this year?

Below are some suggestions, based on what other churches are giving:

Country and village churches	\$10. to \$25
Churches in small cities	\$25 to \$100
Larger churches	\$100. to \$200
Great City churches	\$200. to \$500. or more

Respectfully submitted,  
 FELDER L. ROWAN.

October 5, 1956  
 Middle Florida Baptist Association

Bro. Moderator:

We, the budget committee for the Middle Florida Baptist Association, with careful planning, wish to submit the following recommendation and suggested budget for the year beginning October 1, 1956 and ending September 30, 1957:

1. A word of appreciation for the wonderful cooperation the Churches of Middle Florida Association by contributing to the budget for last year.
2. The budget be financed by each Church continuing to send 3% of their Pastor salary to the Association Treasurer.
3. We recommend the Association send \$300.00 to match the other Associations toward getting some buildings built for our Assembly Ground to be of use in near future.
4. We recommend an increase for each of our departments, \$50.00 for the coming year. Sunday School, B T. U., W. M. U. and Music Department. The Brotherhood to stay the same.
5. We make the following suggestions as the budget for the ensuing year 1956 and 1957:

Printing Minutes .....	\$ 400.00
Clerk's salary .....	175.00
Training Union expenses .....	200.00
W. M. U. expenses .....	327.00
Sunday School expenses .....	200.00
Music expenses .....	200.00
Brotherhood expenses .....	450.00
Moderator and Vice-Moderator's expenses .....	100.00
Incidentals .....	200.00
Treasurer's Salary .....	100.00
\$100.00 per day each day for Assn. meeting .....	200.00
The Middle Florida Assembly Ground .....	300.00
<b>Total .....</b>	<b>\$2,842.00</b>

Respectfully submitted,

Your Committee,

ODIS MURPHY, Chairman  
 DEWEY MANN  
 JOHN R. COLLINS

Note.—W. M U. to send all their collections to Treasurer.

**BE IT RESOLVED:**

1. That the MIDDLE FLORIDA BAPTIST ASSOCIATION does hereby petition the State Board of Missions of the Florida Baptist State Convention to request the trustees of STETSON UNIVERSITY to adopt an amended charter that will provide a rotating of trustees, nominated and elected by the Florida Baptist State Convention, and take whatever steps are necessary to make it legal, and thus assure Florida Baptists that control of STETSON UNIVERSITY is in the hands of the Florida Baptist State Convention and the past and the future investments of Co-operative Program funds in Stetson University are secure;

2. That a copy of this resolution be forwarded to the trustees of STETSON UNIVERSITY and a copy be published in the Florida Baptist Witness at the earliest possible date.

REV. J. T. MADDOX, Moderator.  
CARL W. BURNETT, Clerk.

**TIME & PLACE COMMITTEE REPORT**

The Time and Place Committee recommends that the Association accept the invitation of the Athena Baptist Church for the first day of the 1957 meeting, and that of the Pleasant Grove (Taylor County) for the second day.

It is further recommended that the dates of Oct. 17 and 18 be accepted as recommended by the Moderator's and Clerk's Conference.

Respectfully submitted,  
F. W. CRUCE, Chairman  
C. F. HOOKER  
J. C. MOORE

**REPORT ON BAPTIST LITERATURE**

and

**THE FLORIDA BAPTIST WITNESS**

There is no gainsaying the fact that literature, religious and otherwise, plays an important part in moulding the character and shaping the destiny of any nation.

The farreaching influence of literature was recognized and forcefully expressed by Bacon when he said: "If I might control the literature of the household, I would guarantee the well-being of the church and state." With equal truth and force another has said, "From the hour of the invention of printing, books, and not kings, were to rule the world. Weapons forged in the mind, keen-edged, and brighter than a sunbeam, were to supplant the sword and the battleaxe."



Apropos to our literature producing age is the kindly admonition of the Apostle Paul to Timothy: "Study to show thyself approved unto God, rightly dividing the word of Truth." The urgent need of today is not for more literature, but for a proper appraisal of the super-abundant supply which we have.

Our printing presses are turning out an adequate supply of reading matter to meet the demands of a reading-minded public. But, unfortunately, a vast amount of this reading matter is not only wholly lacking in religious vitamins, but is designed for the specific purpose of poisoning the mind of the reader against anything that is of a religious nature.

This being true, it is imperative that we "give attendance to reading" in order that we may be able to differentiate between the harmful and the helpful. With this knowledge in our possession, we can set ourselves to the task of discouraging the reading of that kind of literature which tends to plant the seeds of skepticism in the mind of the reader, and encourage the reading of that kind of literature which is conducive to the deepening of the spiritual life and the development of Christian character.

Ofttimes Christians lend support to the enemy cause by purchasing reading material for the home which is of a detrimental nature. The children read it and are influenced by its teachings. Southern Baptists are seeking to correct this situation by supplying wholesome reading matter for the entire family. Circulation for these periodicals is increasing year by year. During the past year the number of periodicals published and distributed by the Sunday School Board exceeded the 65,000,000 mark. In addition, there were more than 3,000,000 books and untold millions of tracts.

The need for taking and reading our denominational papers can scarcely be overemphasized. According to the report given at the last session of the Southern Baptist Convention, the 22 State Baptist papers had a combined circulation of 1,250,000 copies per week. The helpful influence which these state papers wield upon Southern Baptist work can scarcely be estimated.

The Florida Baptist Witness, our own State paper, has a circulation of 43,286 through the medium of 660 churches. Six hundred of these churches use the budget plan for at least a portion of their membership. Sixty other churches have small Clubs of subscribers. There are at least 32,000 more Baptist homes into which the paper ought to go. The committee heartily recommends the budget plan for sending the paper into every resident Baptist home. This is an investment which pays worthwhile dividends.

Respectfully submitted,

S. V. COFIELD, Chairman.

### WOMAN'S MISSIONARY UNION REPORT

"The Lord hath done great things for us whereof we are glad."—Psalm 126:3.

Truly the Lord has blessed the labors of the women of this Middle Florida Missionary Baptist Association, for we can report steady progress along all lines of work during the year 1955-56.

We are happy to report one new W. M. S. organized this year at the Bethel Creek Church. Surely the vision of our women has been broadened, and the spiritual life deepened as we have endeavored together to bring Christ into the midst of our daily lives in our homes and communities.

Our Missionary zeal was lifted to new planes of endeavor by the inspiring message of our scholarship student, Samuel Ho from Hong Kong.

Your president has been greatly blessed and inspired by the enthusiasm of the membership of the W. M. S. throughout the Association. Each visit into churches has been a source of sustaining fellowship as we have sought to become "Laborers together with God."

As we press forward to the year ahead, let us keep in mind the aims set before us as our goals for accomplishment.

Let us seek to do the following things:

1. Develop an appreciation for all people and a deep concern for those who are lost without Christ.
2. Strengthen the spiritual life of our members.
3. Lead members into experience of Christian witnessing through individual efforts of soul winning.
4. Magnify Christian sharing by telling.
5. Cultivate missionary convictions in the hearts of our youth.
6. Bring others into the growing experience of missionary endeavor.
7. Give to our women informed leadership.

In closing, let us keep before us our watchword for the new year found in Habakkuk 2:14 and earnestly pray, that the earth shall be filled with the knowledge of the Glory of God, as the waters that cover the sea.

MRS. ROY MILLIRON.

### REPORT ON CHRISTIAN EDUCATION

Christian Education is the most important step in reaching the goals set forth by Christ when He gave the Great Commission,—that we go into all the world and teach and preach the Gospel. We must train the minds of our youth that they may become more effective workers as they become the preachers and teachers of tomorrow.

As our great mission program is growing and being expanded over every nation on earth, it is imperative that we give encouragement to our youth, and all possible support to our educational organizations, to equip them with the necessary Christian Education so vital to Christian service, so that when the call comes from God to the various individuals, they will be prepared to take their place in whatever field of service they are called.

Christian Education will not only give us well qualified ministers and teachers at home and abroad, but will give us better trained people in all walks of life, which will make our world of tomorrow a greater place to live. Christian Education will reduce crime, increase knowledge of God, and of our fellowman over the world.

In our own state of Florida, we have the great Stetson University which is growing each year, meeting the needs of more of our youth constantly. Also, the Baptist Bible Institute located at Graceville, under the leadership of our great educational directors. We are producing great leaders of the future. We are offering assemblies and summer camp, and various training campaigns to keep us informed of the latest methods of teaching and leadership.

Not in our state of Florida does Christian Education end, but over the entire South land we have great Seminaries that are offering a full and complete growth in Christian Education and Development. The following are the names of these Seminaries with their enrollment.

Golden Gate Baptist Theological Seminary, Berkley, Calif.  
—Enrollment, 331.

New Orleans Baptist Theological Seminary, New Orleans, La.  
—Enrollment, 856.

Southeastern Baptist Theological Seminary, Inc., Wake Forest, N. C.—Enrollment, 400 Av.

Southern Baptist Theological Seminary, Louisville, Kentucky.  
—Enrollment, 1,767.

Southwestern Baptist Theological Seminary, Fort Worth, Texas.—Enrollment, 2,414.

Let us not forget that the Bible teaches us to bring a tithe and offering to the Lord's Storehouse, and in so doing, we support through the Cooperative Program, all phases of our Baptist work.

Christian Education is God's business and His program, taught in His Word, II Timothy, 2:15, "Study to shew thyself approved unto God, a workman that needeth not to be ashamed, rightly dividing the word of truth."

REV. I. T. CARTER.

**SUNDAY SCHOOL REPORT**

In the Word of God we read "Gather the people together, men, and women, and children, and thy stranger that is within thy gates, that they may hear, and that they may learn, and fear the Lord your God, and observe to do all the words of this law."—Deut. 31:12.

The Sunday Schools have proven themselves to be a great Bible teaching, evangelistic, enlistment, and financial agency of our churches. Through continued guidance of their programs they will help in the coming year to do even more than during the past year.

The State Sunday School Department, C. F. Barry, Secretary, reports an improvement of all phases of his work. While it is impossible to give exact figures, as all reports are not complete, the following will give some idea of our state work.

Approximately 1250 Sunday schools; an enrolment of approximately 340,000; 50,000 Sunday school training awards; approximately 850 Vacation Bible Schools; over 1800 Standard units.

Secretary Barry expresses his appreciation to us for our co-operation in all his state-wide promoted work, especially in our working with him in the associational Sunday school schedule of meetings, vacation Bible school clinics, etc.

Our Association reports this year: 12 Vacation Bible Schools; 13 churches earning 379 Sunday school Training Awards, and no standard Sunday schools.

**Recommendations:**

1. That we maintain as near as possible a complete Associational Sunday School organization with regular meetings as scheduled.  
That we encourage our churches to attend with their Sunday school leadership in order to share their work and experience so as to help improve our total work.
2. That we encourage our churches to increase their enrolment in Sunday school by 20%.
3. A Vacation Bible School in every church if possible.
4. The observance of Bible Study Week in January.
5. That our Sunday school co-operate with all the special days as promoted by the Florida Baptist Convention.

Respectfully submitted,

JAMES T. BARBER.

### THE FLORIDA BAPTIST FOUNDATION

The Florida Baptist Foundation is an agency of the Florida Baptist Convention. Its Trustees, who manage its affairs, are elected by the Convention. (Three are elected annually.)

The Foundation does not seek primarily to raise money for its own purposes but rather to stimulate and encourage the sympathies of our people in establishing productive funds on behalf of Baptist agencies, State and Southwide. These funds, the Foundation will handle, invest and re-invest and distribute income and/or corpus as a donor may designate.

The Officers and Trustees of the Foundation believe that the establishment of such invested funds will act as a worthy assistance and assurance to the various Baptist agencies rendering service the world around.

The Foundation earnestly invites the inquiries of our people concerning the making of wills, creating of trust funds for the support of specific agencies, the establishment of educational scholarships or as contributions to existing, or for the creation of new, endowments.

Should a donor wish his gift or its income to be used for the benefit of his home church, the Foundation will also act under such circumstances.

Until this year, the Foundation was not qualified in the field of annuities. And while that aspect has not changed as to the actual funding of annuities, by a new provision made by the Relief and Annuity Board of the Southern Baptist Convention, people of the various states may now purchase annuities to be funded by them, the State Foundations acting as liaison and the annuitant having the privilege of designating the way the gift portion is to be distributed. By this generous arrangement, the people of our state may purchase these annuities and designate any of the state agencies as the recipient of the gift portion. The rates of income are attractive and by this means, persons may use their estate for their life-time needs and still designate a substantial portion to Kingdom service.

The Foundation will gladly furnish the rates of return on these annuities by writing the office, Box 1147, Plant City, Florida.

Respectfully submitted,

E. G. MUGGE.

### OUR BELOVED DEAD

WHEREAS; God in His Divine Providence and Wisdom, has seen fit to call to their eternal reward a number of our brothers and sisters,

BE IT RESOLVED; That our deepest sympathies go to the families of the deceased, and our thanksgiving to God for their lives, and that their names be placed on the pages of our Association Minutes.

**Athena**

Mrs. Clara Parker

**Bethel Creek**

Mr. George Brock

**Brewer Lake**

Mrs. Annie Buchanan

Miss Mavedine Horton

**Cherry Lake**

Mr. Alton Singletary

**Elizabeth**

Mr. Millage Holland

Mr. Lamar Allen

Mrs. Alice Hamrick

Mrs. Ruth Hamrick

Mrs. Rosa Hampton

**Friendship**

Mrs. Louisa Devane

**Greenville**

Mrs. C. W. Nicholson

**Lakeside**

Mrs. Della Sanford

Mr. Roy McMath

**Lec**

Mr. Johnny Thomas

**Lamont**

Rev. Steve Chandler

**Macedonia**

Mrs. Sarah Pepera

**Madison**

Mrs. Susie Moseley

Miss Minnie Cochran

Mrs. W. B. Stewart

Mr. M. H. Williams

**Mayo**

Mrs. H. L. Winderweedle

**Mt. Olive**

Mr. M. A. Payne

Mr. Robert Pickles

Mrs. Mary F. Hill

Mr. John Burt Tuten

Mr. Charlie Medders

**New Home (Perry)**

Mrs. Fannie Register

Mrs. Cecil Lyons

Mrs. Betty Lyons

Mrs. Ruben Pitts

Mr. G. B. Huff

Mr. T. S. Severance

Mr. Frank Woods

Mr. A. J. Morris

**Perry First**

Mrs. J. Q. Faulkner

Mr. W. J. Hines

Mr. Tyson Hicks

Mrs. L. V. Hester

Mrs. Beulah Chauncy

Mr. A. D. Poppell

Mrs. Lillie Arnold

Mrs. English

**Pinetta**

Mr. Irving Newbern

**Pine Grove**

Mrs. N. C. Gibson

**Pleasant Grove (Lay-)**

Mrs. Oliver Lawson

Mr. Jim Lawson

**San Pedro**

Mrs. Maggie Hall

Mrs. Lenora Corrin

**St. John's**

Mrs. Wynette Bush

**Steinhatchee**

Mrs. Mary Petroff

Respectfully submitted,

REV. J. M. SULLIVAN.

Table A—CHURCH AND MEMBERSHIP

CHURCHES	Location: Rural V-T-C	Date Organized	Dates of Meeting	PASTORS AND ADDRESSES	GAINS		LOSSES	TOTAL				SPECIAL INFORMATION						
					Baptisms	Letters and Other Additions		Total Resident Members	Total Non-resi- dent Members	Grand Total Present Members	Number Jews Baptized	Revival Meet- ings Held	Number Tithees	Church Have Budget?	Every Member Caucuses	State Paper in Budget?	No. Local Mis- sions Operated by Church	Pastor's Annual Salary (Whether had a pastor or not)
Athens	R	1897	4	W. J. Price, Rt. 2, Perry, Fla.	9	7	3	92	9	101	0	2	44	Yes	Yes	Yes	0	\$ 3,900
Bethel Creek	R	1919	4	R. A. Kelly, Rt. 3, Madison, Fla.	2	3	4	43	33	76	0	2	No	No	No	0	1,275	
Beulah	R	1902	4	Ben Duque, Valdosta, Ga.	5	4	0	45	33	78	0	2	15	Yes	No	No	0	1,309
Brewer Lake	V	1888	4	C. P. Hooker, Day, Fla.	7	7	1	171	43	214	0	2	Yes	No	No	0	3,120	
Burton-Perry	C	1923	4	James Howell, Perry, Fla.	9	6	14	109	39	148	0	1	53	Yes	Yes	Yes	0	2,900
Central	V	1907	1-3	D. Kilpatrick, Rt. 5, Tallahassee, Fla.	1	2	1	73	39	112	0	1	10	Yes	No	Yes	0	1,200
Cherry Lake	R	1937	4	J. R. Collins, Greenville, Fla.	8	23	13	114	33	147	0	1	50	Yes	Yes	Yes	0	2,600
Elizabeth	R	1831	4	James L. Temple, Monticello, Fla.	4	7	9	178	50	228	0	1	30	Yes	Yes	Yes	0	2,030
Friendship	R	1920	4	F. A. Parker, Perry, Fla.	24	7	5	153	23	176	0	1	32	Yes	Yes	Yes	0	1,200
Greenville	T	1857	4	J. T. Maddox, Greenville, Fla.	11	11	20	223	101	324	0	3	35	Yes	Yes	Yes	0	3,690
Hopewell	R	1877	4	F. A. Parker, Perry, Fla.	1	6	5	100	76	176	0	2	21	Yes	Yes	Yes	0	3,380
Lake Side	R	1953	4	F. W. Cruce, Rt. 1, Perry, Fla.	33	23	8	161	9	173	0	1	87	Yes	No	Yes	0	3,900
Lee	V	1904	4	J. T. Carter, Jasper, Fla.	16	9	10	208	71	270	0	2	Yes	No	Yes	0	3,050	
Lamont	V	1896	2-4	D. Kilpatrick, Rt. 5, Tallahassee, Fla.	0	1	7	60	33	103	0	1	Yes	No	Yes	0	1,200	
Macedonia	R	1865	4	L. M. Luff rty, Lee, Fla.	5	12	18	150	66	216	0	2	Yes	Yes	Yes	0	3,000	
Madison	T	1850	4	James T. Barber, Madison, Fla.	15	26	26	410	246	656	0	1	Yes	Yes	Yes	0	5,301	
Mayo	C	1894	4	S. V. Cofield, Mayo, Fla.	2	15	21	141	96	237	0	0	22	Yes	No	Yes	0	3,600
Midway	R	1856	4	Lorace Cothron, Lee, Fla.	4	4	7	103	96	199	0	2	14	Yes	Yes	Yes	0	2,200
Mosley Hall	R	1901	4	W. J. Price, Perry, Fla.	1	0	0	51	27	78	0	2	No	Yes	No	0	960	
Mt. Gifted	R	1850	4	T. A. Goodman, Shady Grove, Fla.	0	3	1	38	38	76	0	1	Yes	Yes	Yes	0	520	
Mt. Olive	R	1898	4	J. R. Dykes, Rt. 1, Moultrie, Ga.	2	5	6	84	16	100	0	2	10	Yes	No	No	0	1,855
New Home (Mad.)	R	1923	4	Dozier Sapp, Rt. 1, Madison, Fla.	12	2	10	96	34	130	0	2	8	No	No	No	0	1,309
New Home (Perry)	C	1941	4	Alva Horton, Perry, Fla.	71	35	26	436	131	567	0	2	160	Yes	Yes	Yes	0	4,290
New Hopeful	R	1876	1-3	Carl A. Webb, Lee, Fla.	2	0	2	59	28	87	0	0	6	No	No	No	0	720
New Macedonia	R	1873	4	J. C. Moore, Greenville, Fla.	5	0	2	82	82	164	0	2	2	Yes	Yes	Yes	0	1,225
Oakland	R	1880	4	Alva Horton, Box 265, Perry, Fla.	0	0	3	26	11	36	0	1	No	No	No	0	120	
Perry First	C	1877	4	Dewey Mann, Perry, Fla.	87	99	69	1,021	1,021	2,042	0	1	325	Yes	No	Yes	0	6,600
Pinecroft	V	1918	4	Felder L. Rowan, Pinecroft, Fla.	9	17	13	174	75	249	0	2	15	Yes	No	No	0	3,175
Pine Grove	R	1860	4	S. J. Graham, 415 E. 1111 Ave., Valdosta, Ga.	0	1	4	79	41	120	0	2	15	Yes	Yes	Yes	0	1,500
Piggah	R	1918	4	Odis Murphy, Perry, Fla.	18	3	1	85	15	100	0	1	Yes	No	No	0	1,300	
Pleasant Grove (Lay.)	R	1874	4	I. L. Parber, Rt. 2, Mayo, Fla.	10	1	3	98	38	136	0	2	8	Yes	No	No	0	1,555
Pleasant Grove (Lay.)	R	1879	4	G. J. Lewis, Shady Grove, Fla.	2	5	9	47	30	77	0	1	Yes	No	No	0	90	
River Side	R	1902	4	Jimmy Hayes, Perry, Fla.	4	6	6	74	101	178	0	1	5	No	No	No	0	1,052
Sun Pedro	R	1888	4	J. M. Sullivan, Perry, Fla.	8	9	10	78	59	137	0	2	30	Yes	Yes	Yes	0	2,650
Simsau	V	1909	4	M. J. Fowler, Day, Fla.	0	0	3	38	16	54	0	1	3	Yes	No	No	0	1,200
South Side (Perry)	C	1930	4	Cluade T. Hall, Box 412, Perry, Fla.	24	11	11	103	132	235	0	2	03	Yes	No	Yes	0	3,720
St. Johns	R	1946	1-3	J. R. Penfield, Morven, Ga.	0	4	6	55	24	79	0	2	12	Yes	No	No	0	720
Steinshachee	V	1930	4	J. W. Johnson, Perry, Fla.	1	0	8	32	26	58	0	0	No	No	No	0	938	
TOTALS.....					407	374	354	4,250	1,910	7,262	0	66	1,075				0	\$84,389

Table B—THE SUNDAY SCHOOL

CHURCHES	SUNDAY SCHOOL SUPERINTENDENTS AND ADDRESSES	SUNDAY SCHOOL ENROLMENT																	
		Cradle	Nursery	Beginners	Primaries	Juniors	Intermediates	Young People, Single	Young People, Married	Adults	Extension Department	Officers Not Counted	Classes and Departments	Mission Sunday School Enrolment	Grand Total Sunday School Enrolment	Average Attendance	Vacation Bible School Enrolment	Average Attend- ance V. B. S.	January Bible Study
Athens	W. H. McHargue, Rt. 2, Perry, Fla.	0	11	12	10	10	12	8	12	29	0	2	0	106	70	96	70	Yes	0
Ethel Creek	Walter Hall, Day, Fla.	0	0	14	0	0	5	0	0	24	0	2	0	43	25	0	0	No	0
Peulah	Eugene Stokes, Rt. 1, Lee, Fla.	0	0	5	0	15	8	0	14	0	0	0	0	32	30	0	0	No	0
Erewer Lake	W. C. Keine, Rt. 1, Mayo, Fla.	0	0	0	8	11	13	23	0	67	0	2	0	124	94	0	0	No	0
Furton-Perry	D. F. A. Ien, Jr., Rt. 1, Perry, Fla.	0	12	10	20	10	4	7	24	0	0	0	0	89	70	56	52	...	0
Central	Mrs. Milbra Tindell, Rt. 3, Monticello, Fla.	0	0	6	5	5	12	12	0	23	0	4	0	67	40	40	30	No	0
Cherry Lake	Horace W. Weaver, Rt. 3, Madison, Fla.	2	4	18	13	15	12	9	3	45	0	4	0	124	63	73	67	Yes	0
Elizabeth	James De Mott, Monticello, Fla.	0	0	7	10	13	21	0	17	49	0	14	0	143	63	0	0	...	0
Friendship	E. J. Murphy, Rt. 1, Perry, Fla.	0	16	9	23	20	44	9	0	42	0	3	0	136	93	86	76	Yes	2
Greenville	T. P. McLeod, Jr., Greenville, Fla.	4	21	15	40	30	12	11	20	105	12	3	0	303	157	125	114	Yes	0
Hopewell	V. L. Singletery, Rt. 1, Madison, Fla.	0	0	18	6	15	14	8	12	26	0	2	0	101	61	0	0	...	0
Lake Side	George Y. Brannen, Rt. 2, Perry, Fla.	8	0	27	32	22	20	11	0	59	23	4	0	206	103	105	100	Yes	0
Lee	Edgar Farris, Lee, Fla.	0	0	15	12	23	22	11	0	33	0	0	0	106	95	83	70	No	0
Lamont	C. J. Reams, Box 6, Lamont, Fla.	0	0	11	7	6	6	5	7	12	0	5	0	59	40	41	35	No	0
Macedonia	Vernon Wells, Madison, Fla.	0	8	4	6	16	16	6	2	48	0	2	0	108	65	67	61	No	0
Madison	Carl Pevis, Madison, Fla.	0	15	28	62	57	45	15	0	152	0	4	0	378	201	134	133	Yes	2
Mayo	Harvey Croft, Mayo, Fla.	1	14	13	20	21	22	7	0	54	7	3	0	162	88	81	72	Yes	0
Midway	Cecil Licks, Rt. 1, Lee, Fla.	0	0	14	9	11	14	11	0	34	0	0	0	93	62	63	58	No	0
Mosley Hall	Leroy Crues, Rt. 3, Greenville, Fla.	0	0	7	5	4	6	0	0	22	0	1	0	47	27	0	0	No	0
Mt. Gilead	W. M. Aman, Shady Grove, Fla.	0	0	1	7	0	4	0	8	0	17	0	0	37	27	0	0	No	0
Mt. Olive	Cleo Phillips, Pox 301, Madison, Fla.	0	0	8	7	12	3	0	31	0	9	0	0	73	46	59	41	No	0
New Home (Mad.)	Marvin Fass, Rt. 1, Madison, Fla.	5	0	6	9	8	21	7	0	33	0	5	0	94	60	0	0	Yes	0
New Home (Perry)	J. C. Williams, Perry, Fla.	12	6	20	43	65	37	11	14	133	0	2	0	346	241	134	104	Yes	1
New Hopeful	Dawson Rutherford, Madison, Fla.	4	0	0	6	8	12	0	0	0	0	3	0	48	13	0	0	No	0
New Macedonia	J. D. O'Quinn, Greenville, Fla.	0	0	8	9	12	0	12	0	27	0	3	0	80	45	43	35	No	0
Oakland	No Sunday School																		
Perry First	Pat Weaver, E. College St., Perry, Fla.	27	36	60	80	80	81	26	0	253	0	4	0	674	312	162	128	No	2
Pinetta	Howard Frier, Pinetta, Fla.	0	0	27	14	27	17	9	0	73	12	0	0	170	92	128	102	No	0
Pine Grove	W. B. Seals, Rt. 2, Madison, Fla.	0	0	11	0	8	0	11	0	20	0	0	0	50	28	0	0	No	0
Pisgah	Ellis Lundy, Rt. 1, Perry, Fla.	0	0	9	7	11	8	8	36	0	0	4	0	83	45	...	0	Yes	1
Pleasant Grove (Jay.)	Morris Wilder, Rt. 1, Mayo, Fla.	0	15	9	9	16	0	0	14	35	0	8	0	106	79	0	0	Yes	0
Pleasant Grove (Tay.)	E. P. Andrews, Shady Grove, Fla.	0	0	17	0	5	10	0	0	19	0	0	0	57	40	0	0	No	0
River Side	Larry Willis, Rt. 1, Mayo, Fla.	5	0	11	0	13	0	11	0	25	0	0	0	65	49	0	0	No	0
San Pedro	Riley Dorman, Rt. 2, Perry, Fla.	0	0	8	0	7	4	10	0	22	0	3	0	64	40	0	0	Yes	0
Sirmans	Kelly Pailey, Greenville, Fla.	0	0	4	4	6	7	0	0	10	0	5	0	36	22	0	0	Yes	0
South Side (Perry)	A. R. Cothran, Rt. 2, Perry, Fla.	0	27	16	25	28	27	17	0	54	0	5	0	199	98	84	79	Yes	0
St. Johns	W. B. Wynn, Greenville	6	6	2	8	6	9	15	0	14	0	0	0	54	27	0	0	No	0
Steinhatchee	John Binley, Steinhatchee, Fla.	0	0	10	8	5	15	0	0	13	0	0	0	52	50	18	0	No	0
TOTALS		72	198	482	529	643	584	186	175	1,603	54	105	0	4,695	2,761	1,678	1,433	....	8



Table C—TRAINING UNION

CHURCHES	TRAINING UNION DIRECTORS AND ADDRESSES	TRAINING UNION ENROLMENT										
		Nursery	Beginners	Primaries	Juniors	Intermediates	Young People	Adults	Mission Enrolment	General Officers Enrolled	Grand Total Enrolled	Average Attendance
Athens.....	Harry Massey, Rt. 2, Perry, Fla.....	8	10	6	7	11	7	33	0	4	86	50
Icubah.....	Frank Stokes, Rt. 1, Lee, Fla.....	0	4	0	4	5	2	16	0	0	33	28
Freewor Lake.....	A. J. Townsend, Rt. 1, Mayo, Fla.....	0	10	0	18	14	0	19	0	0	54	32
Burton (Perry).....	E. J. Tedder, Rt. 1, Perry, Fla.....	0	0	6	12	4	0	15	0	0	30	23
Central.....	F. C. McKown, Rt. 3, Monticello, Fla.....	0	0	4	10	7	0	14	0	0	30	30
Cherry Lake.....	Mrs. Job Mihur, Rt. 3, Madison, Fla.....	2	7	8	12	9	6	28	0	0	75	52
Elizabeth.....	Mrs. Allen Lightsey, Monticello, Fla.....	0	8	5	8	18	11	36	0	0	85	38
Friendship.....	Herbert Murphy, Rt. 1, Perry, Fla.....	7	5	8	16	12	8	12	6	6	73	50
Greenville.....	J. G. Muggs, Greenville, Fla.....	4	6	11	18	21	12	36	6	6	111	69
Hepswell.....	Albert Kelly, Rt. 1, Madison, Fla.....	0	7	5	11	12	8	31	6	6	77	53
Lake Side.....	Miss Edith Albritton, Box 380, Perry, Fla.....	5	4	18	14	12	11	47	6	6	117	73
Lee.....	Leroy Rutherford, Madison, Fla.....	0	10	9	19	21	10	28	0	0	90	80
Macdonia.....	Mrs. L. M. Lafferly, Lee, Fla.....	6	3	6	16	16	4	46	6	6	90	63
Madison.....	Mike Humphrey, Box 702, Madison, Fla.....	0	8	5	24	20	8	16	0	0	62	42
Mayo.....	Mrs. Harvey Croft, Box 182, Mayo, Fla.....	0	0	16	10	14	3	17	0	0	63	36
Midway.....	Miss Faye Terry, Rt. Madison, Fla.....	2	6	6	8	12	4	25	0	0	63	45
Mosley Hall.....	Willy Easley, Shady Grove, Fla.....	0	0	8	8	0	0	18	0	0	45	30
Mt. Gilrad.....	Marlin Vann, Shady Grove, Fla.....	1	7	2	4	9	8	31	0	0	57	27
Mt. Olive.....	Cleo McClamma, Madison, Fla.....	0	8	7	12	3	3	31	0	0	73	41
New Home (Mad).....	Jack Pickles, Madison, Fla.....	0	6	8	17	14	11	39	0	0	95	50
New Home (Perry).....	T. R. Coggins, Box 372, Perry, Fla.....	15	0	10	26	23	6	57	0	0	140	100
New Hopeful.....	George Young, Rt. 3, Madison, Fla.....	3	5	0	8	8	0	8	0	0	32	24
New Macedonia.....	L. S. Shackelford, Greenville, Fla.....	0	7	11	12	9	10	21	5	5	80	60
Perry First.....	C. A. Langford, Perry, Fla.....	6	8	21	34	32	19	50	0	0	184	108
Pineetta.....	Jimmy Tyro, Rt. 3, Valdosta, Ga.....	0	7	7	23	15	8	44	0	0	108	56
Pine Grove.....	Arthur Cruce, Rt. 2, Madison, Fla.....	0	7	0	8	6	14	15	0	0	41	35
Pisgah.....	Mrs. P. G. Scott, Perry, Fla.....	0	12	5	7	8	8	12	0	0	51	35
Pleasant Grove (Lay.).....	Mrs. Dorothy H. Hart, Rt. 1, Mayo, Fla.....	0	5	5	8	8	9	20	0	0	58	43
Pleasant Grove (Tay.).....	Russell Tedder, Shady Grove, Fla.....	0	0	8	16	0	0	13	0	0	42	30
San Pedro.....	Mrs. Edith Wright, Rt. Perry, Fla.....	0	0	0	5	9	10	19	0	0	37	26
Sironous.....	Homer Easley, Greenville, Fla.....	0	0	2	5	7	9	10	0	0	20	19
South Side (Perry).....	R. R. Williams, 614 N. Orange St., Perry, Fla.....	10	9	8	10	21	14	30	0	0	107	56
St. Johns.....	Norman Newman, Greenville, Fla.....	2	2	8	15	12	14	12	0	1	53	25
Steinatchee.....	Mrs. Ivy Green, Steinatchee, Fla.....	0	7	7	0	5	3	11	0	0	40	24
TOTALS.....		81	178	230	416	394	228	815	0	108	2,461	1,488

Table D—WOMAN'S MISSIONARY UNION

CHURCHES	PRESIDENTS OF W. M. S. AND ADDRESSES	W. M. S. Units	Y. W. A. Units	C. A. Units	Sunbeam Units	Total Units	W. M. S. Enrolled	Y. W. A. Enrolled	C. A. Enrolled	Sunbeam Enrolled	Total Enrolled	Total Tithees All Organizations
Athena.....	Mrs. Harry Massey, Rt. 2, Box 45, Perry, Fla.....	1	0	1	2	4	10	0	8	10	28	10
Bethel Creek.....	Mrs. Roy Swinson, Rt. 1, Mayo, Fla.....	1	0	0	0	1	9	0	0	0	9	0
Brewer Lake.....	Mrs. Estelle Prime, Day, Fla.....	1	0	0	0	1	14	0	0	0	14	10
Eurton (Perry).....	Mrs. Wilmer Scherrer, Rt. 1, Perry, Fla.....	1	1	1	1	3	10	10	8	8	28	8
Central.....	Mrs. Reba Schierhorst, Rt. 3, Monticello, Fla.....	1	0	1	1	3	10	0	0	3	21	9
Cherry Lake.....	Mrs. Sam Sales, Rt. 3, Madison, Fla.....	1	0	0	0	2	17	0	12	0	20	13
Elizabeth.....	Mrs. Lillie Walker, Monticello, Fla.....	1	0	0	0	1	13	0	0	0	13	10
Friendship.....	Mrs. Lena Murphy, Rt. 1, Perry, Fla.....	1	0	0	0	1	13	0	0	0	13	7
Greenville.....	Mrs. S. E. Algeo, Greenville, Fla.....	3	1	2	2	8	55	4	23	38	120	18
Hopewell.....	Mrs. V. L. Singletary, Rt. 1, Madison, Fla.....	2	0	2	2	4	26	0	15	0	41	10
Lake Side.....	Mrs. Corine Carlton, Rt. 2, Box 86, Perry, Fla.....	2	1	2	2	6	29	5	10	25	69	25
Lee.....	Mrs. Margie Malone, Madison, Fla.....	1	0	0	0	1	21	0	0	0	21	6
Lamont.....	Mrs. A. W. Reams, Lamont, Fla.....	1	0	0	0	1	12	0	0	0	12	0
Maecdonia.....	Mrs. Edd Worthington, Lee, Fla.....	1	0	0	0	1	18	0	0	0	18	0
Madison.....	Mrs. Van H. Priest, Madison, Fla.....	5	0	3	2	10	90	0	33	17	140	85
Mayo.....	Mrs. S. V. Coffield, Box 267, Mayo, Fla.....	3	0	1	2	6	54	0	11	30	95	8
Midway.....	Mrs. W. H. Dickey, Rt. 1, Madison, Fla.....	1	0	1	1	3	14	0	7	8	29	14
Mt. Olive.....	Mrs. Cleo McClamma, 940 S. Range St., Madison, Fla.....	1	0	1	2	2	25	0	10	0	35	4
New Home (Perry).....	Mrs. Alma McClain, Perry, Fla.....	5	1	3	4	13	43	5	25	32	105	57
Perry First.....	Mrs. James L. Howle, Rt. 2, Box 80, Perry, Fla.....	7	1	2	2	12	159	19	38	21	227	97
Pinetta.....	Mrs. T. E. Drew, Pinetta, Fla.....	1	2	2	1	4	9	0	20	9	58	0
Pine Grove.....	Mrs. F. A. Shackelford, Rt. 3, Madison, Fla.....	1	0	0	0	1	22	0	0	0	22	8
Pisgah.....	Mrs. Mattie Newell, Rt. 1, Perry, Fla.....	1	0	0	0	1	10	0	0	0	10	0
Pleasant Grove (Lay.).....	Mrs. Dorothy H. Hart, Rt. 1, Mayo, Fla.....	1	0	0	0	1	18	0	0	0	18	1
San Pedro.....		1	0	0	0	1	16	0	0	0	16	0
Sirmans.....	Mrs. Anna Bailey, Greenville, Fla.....	1	0	0	0	1	5	0	0	0	5	0
South Side (Perry).....	Mrs. A. G. Roach, Rt. 2, Perry, Fla.....	1	1	1	1	4	28	7	8	16	59	25
Steinhatchee.....	Mrs. Minnie Stewart, Steinhatchee, Fla.....	1	0	0	0	1	12	0	0	0	12	6
TOTALS.....		48	6	23	20	97	771	50	230	207	1,276	431

Table E—BROTHERHOOD WORK

CHURCHES	PRESIDENTS OF MEN'S BROTHERHOODS AND ADDRESSES	CHAIRMAN OF ROYAL AMBASSADOR COUNCELLOR AND ADDRESSES	Men's Brotherhood Enrollment	Young Men's Brotherhood Enrollment	Number Junior R. A. Chapters	Junior R. A. Enrollment	Number Intermediate R. A. Chapters	Intermediate R. A. Enrollment	Total Brotherhood Enrollment
Athens	Billy Ricketson, Rt. 3, Perry, Fla.		16	0	0	0	1	0	22
Burton (Perry)	C. L. Lawson, Perry, Fla.		19	0	0	13	0	0	32
Cherry Lake	Ralph Joseph, Rt. 3, Madison, Fla.	Bob Milner, Rt. 3, Madison, Fla.	17	0	0	0	0	0	17
Elizabeth	Louis Birdwell, Monticello, Fla.		18	0	0	0	0	0	18
Friendship	Herbert Murphy, Rt. 1, Perry, Fla.		24	0	0	0	0	0	24
Greenville	E. L. Patrick, Sr., Greenville, Fla.	J. T. Maddox, Greenville, Fla.	25	0	0	12	0	0	37
Hopewell	V. L. Singletary, Rt. 1, Madison, Fla.		21	0	0	0	0	0	21
Lake Side	Jessie L. Fallings, Rt., Perry, Fla.		32	0	0	7	0	0	39
Macedonia	I. F. Day, Lee, Fla.	L. M. Lafferly, Lee, Fla.	18	0	0	18	0	0	36
Madison	Stanley Williams, Madison, Fla.	Stanley Williams, Madison, Fla.	100	0	0	15	0	0	115
Mayo	W. G. Croft, Jr., Mayo, Fla.		21	0	0	0	0	0	21
Midway	W. H. Dickey, Madison, Fla.		14	0	0	0	0	0	14
Mt. Olive	K. R. Thomas, Lee, Fla.		17	0	0	0	0	0	17
New Home (Mad.)	Sim Andrews, Rt. 1, Madison, Fla.		18	0	0	0	0	0	18
New Home (Perry)	Cedric A. McElveen, Fox 62, Foley, Fla.		57	0	0	8	1	12	77
Perry First	Williard Carmichael, E. Green St., Perry, Fla.		100	0	1	12	0	0	112
Pinetta	Howard Prier, Pinetta, Fla.		28	0	0	5	1	4	37
Pisgah	Lon Hudson, Rt. 1, Perry, Fla.		14	0	0	0	0	0	14
Sau Pedro	Edward Hunter, Rt. 1, Perry, Fla.		15	0	0	0	0	0	15
Sirmaus	Kelly Bailey, Greenville, Fla.		7	0	0	0	0	0	7
South Side	W. E. Parker, Rt. 2, Perry, Fla.		10	0	1	10	0	0	26
	TOTALS		690	0	9	100	3	22	722

Table F—CHURCH MUSIC—CHURCH LIBRARY—BUILDING—GOALS

CHURCHES	CHOIR DIRECTORS OF CHURCHES AND ADDRESSES	CHURCH MUSIC					Church Library	BUILDING				GOALS	
		Number Chords	Total Choir Enrollment	Total Music Budget (excluding salaries)	Use Church Musician Magazine?	Name of Hymnal Used in Auditorium	Does Your Church Have a Library?	Value Pastor's Home	Value of Church Property, Including Pastor's Home	Money Spent on New Construction, Property and Equipment	Total Church Debt at End of Year	Cooperative Program, % of Total Budget	Associational Mission Goal Coming Year
Athens	Mrs. Leila Whitfield, Rt. 2, Box 137, Perry, Fla.	1	15			Broadman Baptist	Yes	\$ 10,000	\$ 27,000	\$ 216	None	\$	\$
Fethel Creek	Mrs. Beulah Snipes, Day, Fla.						No		3,000	165	None		
Beulah		1	12			Broadman Baptist	No		1,500	None	None		
Prever Lake	Mrs. Deloris Townsend, Day, Fla.					Broadman Baptist	No	6,000	36,000	None	None	10%	
Furton-Perry	T. R. Guilford, Sr.	1	20				No	12,000	30,000	None	None		
Central							No		5,500	None	None	300	200
Cherry Lake		2	26	25		Broadman Baptist	No		10,000	1,700	None	300	25
Elizabeth	Enoch Lucas, Monticello, Fla.	2	32		No	Broadman Baptist	No		20,000	1,160	450	444	
Friendship	Miss Rebecca Red, Rt. 1, Perry, Fla.	1	1		No	Broadman Baptist	No		10,000	1,865	None	10%	
Greenville	Mrs. S. B. Algee, Greenv. Ile, Fla.	2	48	750	Yes	Broadman Baptist	Yes	5,000	50,000	None	None	2,830	10%
Hopewell	Wesley Kelly, Rt. 3, Madison, Fla.	1	1				No	5,000	24,350	None	None		
Lake Side	David Medeiros, Perry, Fla.	1	20				No		20,000	3,204	1,500		
Lee	Leroy Rutherford, Madison, Fla.						No		35,000	4,239	None	5%	
Lamont	Tom Failey, Lamont, Fla.	1	43		No		No		5,000	205	None	300	20
Macedonia	Miss Pat Lafferty, Lee, Fla.	1	1	25		Broadman Baptist	No	10,000	50,000	None	None	10%	80
Madison	Brown Settleind, F.S.U., Tallahassee, Fla.	4	60	75	No	Broadman Baptist	No	7,500	137,500	92,255	None	3,300	159
Mayo						Broadman Baptist	No	7,500	21,500	None	None	702	108
Midway	Norman Howard, Rt., Madison, Fla.					Voice of Praise	No	4,000	19,000	1,441	2,120		
Mosley Hall						Broadman Baptist	No		5,000	None	None		
Mt. Glend						Broadman Baptist	No		1,000	None	None	10%	
Mt. Olive	Mrs. M. A. Payne, Rt. 1, Madison, Fla.					Broadman Baptist	No		5,000	None	None		
New Home (Mad.)	Henry Lewis, Madison, Fla.				No	Broadman Baptist	No		10,000	501	None		
New Home (Perry)	S. H. Hendry, Perry, Fla.	2	30		No	Broadman Baptist	No	15,000	45,500	1,773	None	10%	120
New Hopeful					No	Broadman Baptist	No		2,600	None	None		
New Macedonia					No	Broadman Baptist	No		4,500	None	None	10%	
Oakland					No		No		500	68	None		
Perry First	Miss Jeannie Adams, Perry, Fla.	7	120	250	Yes	Broadman Baptist	Yes	10,000	255,000	5,000	None		180
Pinehta		3			No	Broadman Baptist	No	4,000	16,000	353	None	11%	
Pine Grove	W. B. Soaks, Rt. 2, Madison, Fla.				No		No		3,225	100	None		
Pisgah	Mrs. Pauline Lundy, Perry, Fla.				No		No		3,000	None	None	50	
Pleasant Grove (Lay.)	Morris Wilder, Rt. 1, Mayo, Fla.	1	15		No	Broadman Baptist	No		10,000	165	None	180	
Pleasant Grove (Lay.)					No		No		10,000	826	None	50	
River Side					No		No		7,000	941	None		
San Pedro	Miss Edith Wright, Rt. 1, Fox 16, Perry, Fla.	1			No	Broadman Baptist	No	6,500	12,195	None	None		
Sirnaus					No	Broadman Baptist	No		2,000	None	None	5%	
South Side (Perry)	Mrs. Estey Jean Williams, Perry, Fla.	3	40		No	Broadman Baptist	No	5,000	31,000	4,500	9,473	10%	112
St. Johns	Clyde King, Greenville, Fla.	1	12		No	Broadman Baptist	No		10,000	None	None		
Stemhatchee					No		No		7,000	3,113	None	60	30
TOTALS		37	493	\$1,125				\$107,500	\$945,870	\$123,790	\$13,543	\$8,760	\$1,177

Table G AND H—TOTAL GIFTS AND LOCAL EXPENDITURES

CHURCHES	TREASURERS AND ADDRESSES	Total Gifts for All Purposes	Total Salaries (Do not include Pastor's Salary Here)	Maintenance, Insurance, Repair, etc.	New Buildings and Equipment	Literature, Song Books, Printing, etc.	Local Missions and Envolesces	Revival Expenses and Pastoral Supply	Payment on Church Debt	Other Local Expenses	Total Local Expenses (Excluding Pastor's Salary)	Pastor's Salary (Money Paid)	Grand Total Local Expenses
Alicia	Virgil Morgan, Rt. 2, Perry, Fla.	\$ 6,992	\$ 42	\$ 213	\$ 216	\$ 298	\$ 42	\$ 276	\$ 943	\$ 315	\$ 2,308	\$ 3,900	\$ 6,208
Lethel Creek	J. D. Farnell, Rt. 1, Mayc, Fla.	1,822			165	58	33	108		123	187	1,225	1,712
Eouhah	Leroy Alderman, Rt. 1, Lee, Fla.	1,922				115		150		340	606	820	1,426
Erwer Lake	W. C. Winderweelde, Lay, Fla.	4,118	140	165		153	145	450		1,053	2,700	3,753	
Eurlon-Perry	W. J. Porter, 1206 W. Lay St., Perry, Fla.	2,823	370	242		384	236	287	810	276	2,614	2,900	5,514
Central	Oliver Scroggs, Rt. 3, Monticello, Fla.	3,334		163		158		69		158	900	1,200	2,100
Cherry Lake	J. W. Cason, Fox 478, Madison, Fla.	4,403	150	41	1,700	412	10	85		180	877	2,600	3,454
Elizabeth	Mrs. I. auche R. Schiver, 310 W. Olive St., Monticello.	5,802	287	137	1,160	260	267	175	1,231	231	3,768	2,080	5,848
Friendship	Mrs. I arney Johnson, Perry, Fla.	6,575	106	36	1,865	211	136	120		402	2,941	1,200	4,166
Greenville	T. P. McLeod, Greenville, Fla.	15,832	937	228	144	744	57	541		1,094	4,635	3,600	8,235
Hopewell	W. P. Lamb, Madison, Fla.	5,591	105	281	38	212	357	200	1,325		2,608	3,380	5,988
Lake Side	Chas. R. Carlton, 1111 S. Orange St., Perry, Fla.	10,598		314	3,794	511	999	85	500	367	6,405	3,950	9,953
Lee	H. J. Crown, Lee, Fla.	7,962	210	303	4,230	106	179	310			5,708	3,050	8,757
Lumont	Tom I ailey, Lumont, Fla.	2,863		205		128	26	150		157	666	1,200	1,866
Macedonia	O. A. Henderson, Lee, Fla.	6,441		254	721	303	61	333		425	2,173	3,400	5,173
Madison	I. R. Woodard, Madison, Fla.	39,186	1,605	3,755	92,255	1,465	92	468		2,970	102,616	5,304	107,914
Mayo	Mrs. Irene Garden, Mayo, Fla.	8,309		447		371	490	115	773	90	2,385	3,180	5,866
Midway	E. E. Phillips, Rt. 1, Madison, Fla.	4,662		24		39	20	290	1,441	161	1,945	2,200	4,145
Mosley Hall	Sidney R. Moon, Rt. 3, Greenville, Fla.	1,700		20		106	45	200		207	577	950	1,527
Mt. Gilcard	J. O. Vann, Shady Grove, Fla.	903	80		479	73		109		47	778	510	1,288
Mt. Olive	Mrs. Cleo Phillips, Fox 301, Madison, Fla.	3,440			195	377	159	250		239	1,120	1,855	2,975
New Home (Mad.)	Sim H. Andrews, Rt. 1, Madison, Fla.	2,456			501	158	53	125		174	1,012	1,364	2,376
New Home (Perry)	E. E. McClain, Perry, Fla.	16,733		831	1,773	969	890	200		694	4,357	4,200	8,647
New Hopeful	Mrs. Annie Sue Vinzant, Madison, Fla.	708	88	20		71	5			58	242	720	9,603
New Macedonia	Lee I arcluy, Greenville, Fla.	1,936				94		175		144	613	1,225	1,613
Oakland	Ralph Whiddon, Perry, Fla.	461	45	118	68			50		80	279	120	399
Perry First	W. J. Hurn, Fox 225, Perry, Fla.	43,593	7,200	2,370	22,400	2,345	1,620	1,103		3,623	40,566	6,600	47,166
Pineita	M. C. Woodard, Pineita, Fla.	6,342	120	175	353	588	111	284		373	2,010	3,175	5,208
Pine Grove	Mrs. W. I. Seals, Rt. 2, Madison, Fla.	2,808	264	160		80		254		80	589	1,500	2,200
Pleasant	Eddie Clark, Rt. 1, Perry, Fla.	1,939		96		51				461	799	1,300	1,800
Pleasant Grove (Lay.)	Lynward Tolson, Rt. 1, Mayo, Fla.	2,252		24	165	156	42	150		61	597	1,555	2,152
Pleasant Grove (Lay.)	Miss Dety Jean Sheffield, Shady Grove, Fla.	1,299			826	63		50		91	1,031	90	1,121
River Side	Jimmie Lyons, Rt. 1, Mayo, Fla.	1,855		37	941	65	62	75		77	1,317	1,052	2,369
San Pedro	Mrs. Vera Mae Wright, Rt. 1, Perry, Fla.	5,617	75	394	304	167	438	110		176	1,368	2,650	4,018
Sirrans	Mrs. Kelly I ailey, Greenville, Fla.	1,825				147	100	100		119	427	1,390	1,717
South Side (Perry)	J. O. Simons, Foley, Fla.	11,420	428	588		304	27	265	3,911		5,554	3,720	9,274
St. Johns	Marcus M. Day, Greenville, Fla.	1,188				76	27	160		104	302	730	1,082
Steinhatchee	E. P. Buchler, Steinhatchee, Fla.	4,454		110	3,113	106	26			25	3,378	938	4,317
TOTALS		\$ 251,484	\$12,302	\$11,671	\$ 137,486	\$12,531	\$6,527	\$7,804	\$10,934	\$14,690	\$ 211,010	\$83,423	\$ 294,462

Table I AND J—MISSION EXPENDITURES AND TOTAL EXPENDITURES

CHURCHES	CLERKS OF CHURCHES AND ADDRESSES	Cooperative Program	Associational Missions	Designated State Missions	Designated Home Missions	Designated Foreign Missions	Christian Educa- tion, Schools	Orphans Home	Designated Hospitals	Other Objects—Relief and Amnuty, etc.	Total Mission Expenditures	Grand Total Expendi- tures for All Purposes	
Athena	Mrs. W. B. Giddens, Rt. 2, Box 136, Perry, Fla.	\$ 475	\$ 75	\$	\$ 16	\$ 21	\$ 10	\$	\$	\$	\$ 656	\$ 6,850	
Bethel Creek	Mrs. R. V. Singletary, Rt. 1, Mayo, Fla.	15						110		15	139	1,686	
Beulah	Cleveland Driggers, Rt. 1, Lee, Fla.	173									173	1,599	
Brewer Lake	Mrs. Sarah W. Bell, Day, Fla.	120		18	61	41		125			365	4,118	
Burton-Perry	C. A. Wilson, 1211 Calhoun St., Perry, Fla.	120	87	45	5	7		145		400	818	6,332	
Central	Mrs. Blanche Clark, Rt. 3, Monticello, Fla.	419	36	28	45	43		91	62	724	724	2,820	
Cherry Lake	Mrs. D. W. Parnes, Rt. 3, Madison, Fla.	360	25	46			140	12	20	120	723	4,200	
Elizabeth	Norman H. Hartsfield, Monticello, Fla.	444		10	12	8		39			514	6,361	
Friendship	Mrs. Melba Woodall, Rt. 1, Perry, Fla.	374	25				60	15		55	529	4,695	
Greenville	W. C. Prince, Greenville, Fla.	2,191	108	220	319	852	25	171	25	460	4,772	13,007	
Hopewell	Mrs. Gladys Herndon, Box 32, Madison, Fla.	477	25					15		150	675	6,662	
Lake Side	Miss Edith Albritton, Box 389, Perry, Fla.	527	100	26	22	71	25			195	965	10,918	
Lee	Jessie Sullivan, Rt. 2, Madison, Fla.	406	86	12	15	20	15	23			577	9,335	
Lamont	D. R. Walker, Lamont, Fla.	240	36		5	8		104		45	438	2,304	
Macedonia	Mrs. L. E. Welch, Madison, Fla.	845	90		24	26		158	13		930	6,903	
Madison	Elzie M. May, Madison, Fla.	3,300	159	54	76	118	250	34			3,991	11,905	
Mayo	Mrs. Clara Mae Hatch, Mayo, Fla.	735	136	71	37	79	12	254		212	1,537	7,402	
Midway	Miss Willie Phillips, Rt. 1, Lee, Fla.	55			12			16			82	4,227	
Mosley Hall	Sidney R. Moon, Rt. 3, Greenville, Fla.	137	29					37			204	1,741	
Mt. Gilead	W. M. Aman, Shady Grove, Fla.	154	16								170	1,458	
Mt. Olive	Mrs. Cleo Phillips, 940 S. Range St., Madison, Fla.	86		12	7	12					144	3,119	
New Home (Mad.)	Johnnie Tuten, Rt. 1, Madison, Fla.	70	10					27			80	2,450	
New Home (Perry)	Nelvin Slaughter, Perry, Fla.	739	100	21	36	40	90	152			1,197	9,846	
New Hopeful	T. Z. Henderson, Madison, Fla.	65	19								84	1,047	
New Macedonia	Miss Grace Parlay, Greenville, Fla.	194									194	1,806	
Oakland	W. D. Wilson, Box 349, Perry, Fla.	20	3					10			33	433	
Perry First	Mrs. Virginia Dean, Box 258, Perry, Fla.	3,000	180	456	485	914		424		370	5,780	52,946	
Pinetta	George Earlman, Madison, Fla.	654	74	48	30	51		183			1,045	6,253	
Pine Grove	B. F. Davis, Rt. 3, Madison, Fla.	474	47		10	25	12				567	2,337	
Pisgah	D. W. Morgan, Rt. 1, Perry, Fla.	41									41	1,939	
Pleasant Grove (Lay.)	Brady Downing, Rt. 2, Mayo, Fla.	180			4	4		105			293	2,445	
Pleasant Grove (Lay.)	Mrs. Virginia Rowell, Shady Grove, Fla.	50	9								50	1,180	
River Side	Eldridge Lyons, Rt. 1, Box 107, Mayo, Fla.	30									30	2,399	
San Pedro	Mrs. Sarah Odum, Rt. 1, Perry, Fla.	529	50	81	75	35	14	35		103	922	4,940	
Sirmans	Mrs. Kelly Bailey, Greenville, Fla.	88	30	25				43	10		10	207	1,925
South Side (Perry)	Prevatt Wilson, Box 66, Foley, Fla.	923	112	21	12	13	11	138		200	1,434	10,707	
St. Johns	L. C. Newnan, Greenville, Fla.	100									5	1,188	
Steinhatchee	E. F. Beuhler, Steinhatchee, Fla.	60	30		13	13					137	4,454	
TOTALS		\$ 18,670	\$ 1,697	\$ 1,194	\$ 1,271	\$ 2,388	\$ 673	\$ 2,515	\$ 68.00	\$ 2,432	\$ 31,334	\$324,655	

## HISTORY OF MIDDLE FLORIDA BAPTIST ASSOCIATION

Date of Meeting	Church	Moderator	Clerk
Nov. 9, 10, 11, 1900	Macedonia	Rev. T. J. Farnell	Rev. J. L. Rutherford
Oct. 18, 19, 20, 1901	Live Oak	Rev. T. J. Farnell	Rev. H. B. Gibson
Oct. 14, 15, 16, 1902	Pleasant G. (T)	Rev. T. J. Farnell	Rev. H. B. Gibson
Oct. 14, 15, 16, 1903	Pine Grove	Rev. T. J. Farnell	Rev. H. B. Gibson
Oct. 19, 20, 21, 1904	Pleasant G. (T)	Rev. T. J. Farnell	Rev. H. B. Gibson
1905			Rev. H. B. Gibson
Oct. 24, 25, 26, 1906	New Hopeful	Rev. S. R. Clements	Rev. H. B. Gibson
Oct., 1907	Greenville		
Oct. 21, 22, 1908	Lamont	Rev. T. J. Farnell	Rev. H. B. Gibson
Oct. 20, 21, 22, 1909	Brewer Lake	Rev. T. J. Farnell	Rev. H. B. Gibson
Oct. 6, 7, 1910	Hopewell	W. B. Davis	Ardis Warren
Nov. 8, 9, 1911	Beulah	W. B. Davis	Ardis Warren
Nov. 6, 7, 1912	Central	Rev. S. E. Cole	Ardis Warren
Nov. 5, 6, 7, 1913	San Pedro	Rev. S. E. Cole	Ardis Warren
Nov. 3, 4, 5, 1914	Mayo	Rev. S. E. Cole	Ardis Warren
Nov. 9, 10, 11, 1915	Madison	Rev. S. E. Cole	Ardis Warren
Nov. 14, 15, 16, 1916	Perry	Rev. S. E. Cole	Ardis Warren
Nov. 13, 14, 1917	Midway	Rev. S. E. Cole	Ardis Warren
Oct. 1918	Riverside	Rev. S. B. Cole	Theo Leslie
Oct. 14, 15, 1919	Lee	Rev. S. B. Cole	Theo Leslie
Oct. 12, 13, 1920	Elizabeth	Rev. S. B. Cole	Theo Leslie
Oct. 10, 11, 1921	Pleasant Grove (L)	Rev. S. B. Cole	Carl W. Burnett
Oct. 10, 11, 1922	Greenville	Rev. S. B. Cole	J. Vickers
Oct. 23, 24, 1923	Brewer Lake	Rev. S. B. Cole	Carl W. Burnett
Oct. 21, 22, 1924	Central	W. L. Weaver	Carl W. Burnett
Oct. 20, 21, 1925	Midway	A. J. Preston	Carl W. Burnett
Oct. 19, 20, 1926	Macedonia	Judge W. B. Davis	Carl W. Burnett
Oct. 18, 19, 1927	New Macedonia	Judge W. B. Davis	Carl W. Burnett
Oct. 23, 24, 1928	Perry	Judge W. B. Davis	Carl W. Burnett
Oct. 22, 23, 1929	Madison	Judge W. B. Davis	Carl W. Burnett
Oct. 28, 29, 1930	Elizabeth	Jno. F. McCall	Carl W. Burnett
Oct. 27, 28, 1931	Macedonia	Jno. F. McCall	Carl W. Burnett
Oct. 25, 26, 1932	Macedonia	Jno. F. McCall	J. J. Farnell
Oct. 24, 25, 1933	Brewer Lake	Rev. Ray Smith	J. J. Farnell
Oct. 30, 31, 1934	Greenville	Rev. A. M. Parker	J. J. Farnell
Oct. 29, 30, 1935	Macedonia	Rev. W. G. Stracener	J. J. Farnell
Oct. 27, 28, 1936	Lamont	Edwin B. Browning	Carl W. Burnett
Oct. 26, 27, 1937	Burton	Edwin B. Browning	Carl W. Burnett
Oct. 25, 26, 1938	Elizabeth	Dr. A. F. O'Kelly	Carl W. Burnett
Oct. 24, 25, 1939	Madison	Rev. A. H. Townsend	Carl W. Burnett
Oct. 29, 30, 1940	San Pedro	Rev. A. H. Townsend	Carl W. Burnett
Oct. 7, 8, 1941	Pleasant Grove (L)	Edwin B. Browning	Carl W. Burnett
Oct. 6, 7, 1942	Pine Grove	Edwin B. Browning	Carl W. Burnett
Oct. 5, 6, 1943	Macedonia	Edwin B. Browning	Carl W. Burnett
Oct. 3, 4, 1944	Lamont	T. P. McLeod, Jr.	Carl W. Burnett
Oct. 9, 10, 1945	Pleasant Grove (L)	T. P. McLeod, Jr.	Carl W. Burnett
Oct. 8, 9, 1946	Macedonia	T. P. McLeod, Jr.	Carl W. Burnett
Oct. 8, 9, 1947	Midway	John R. Collins	Carl W. Burnett
Oct. 13, 14, 1948	Madison	John R. Collins	Carl W. Burnett
Oct. 13, 14, 1949	Perry and New Home (T)	John R. Collins	Carl W. Burnett
Oct. 12, 13, 1950	Brewer Lake and Riverside	Alva Horton	Carl W. Burnett
Oct. 11, 12, 1951	Athena and Lee	Alva Horton	Carl W. Burnett
Oct. 9, 10, 1952	San Pedro & Cherry Lake	Edwin B. Browning	Carl W. Burnett
Oct. 8, 9, 1953	Pinetta & New Home (M)	W. L. Rollins	Carl W. Burnett
Oct. 7, 8, 1954	Hopewell & Macedonia	John R. Collins	Carl W. Burnett
Oct. 6, 7, 1955	Greenville & Elizabeth	Dewey Mann	Carl W. Burnett
Oct. 4, 5, 1956	Midway and Pleasant Grove (Lay.)	Julian T. Maddox	Carl W. Burnett

